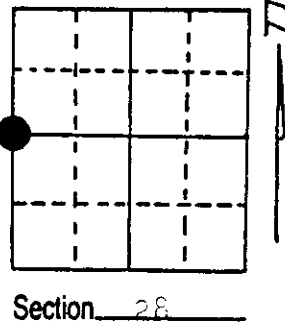
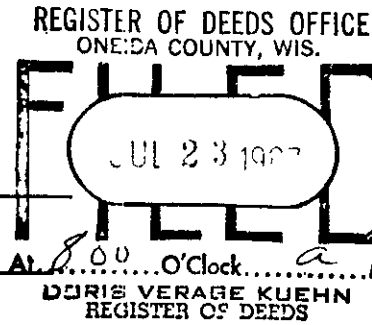


# U.S. PUBLIC LAND SURVEY MONUMENT RECORD

Note: This form is intended and designed to fulfill all requirements of Wisconsin Administrative Code, Chapter A-E 5.02, U.S. Public Land Survey Monument Record (3) (a) (b) (c) (d) (e) (f) (g) (h) (i). An additional sheet may be added if necessary to conform with said requirements.

(a) Corner location: Township 37 North  
 Range 6 East ~~West~~  
 Town/City/Village Cassian  
 County Cneida



(b) (f) (g) (h) Description of monument found at this corner and if it was accepted, state all evidence (material, testimonial, occupational, plats, records, other monuments) used as a basis for accepting. If not accepted or if nothing was found, state evidence used as basis for establishing location. If reestablished through lost corner proportionate methods, indicate all monuments, distances and directions used to establish.

Original survey by Joseph E. Jenkins in 1863

Wood Post Set:

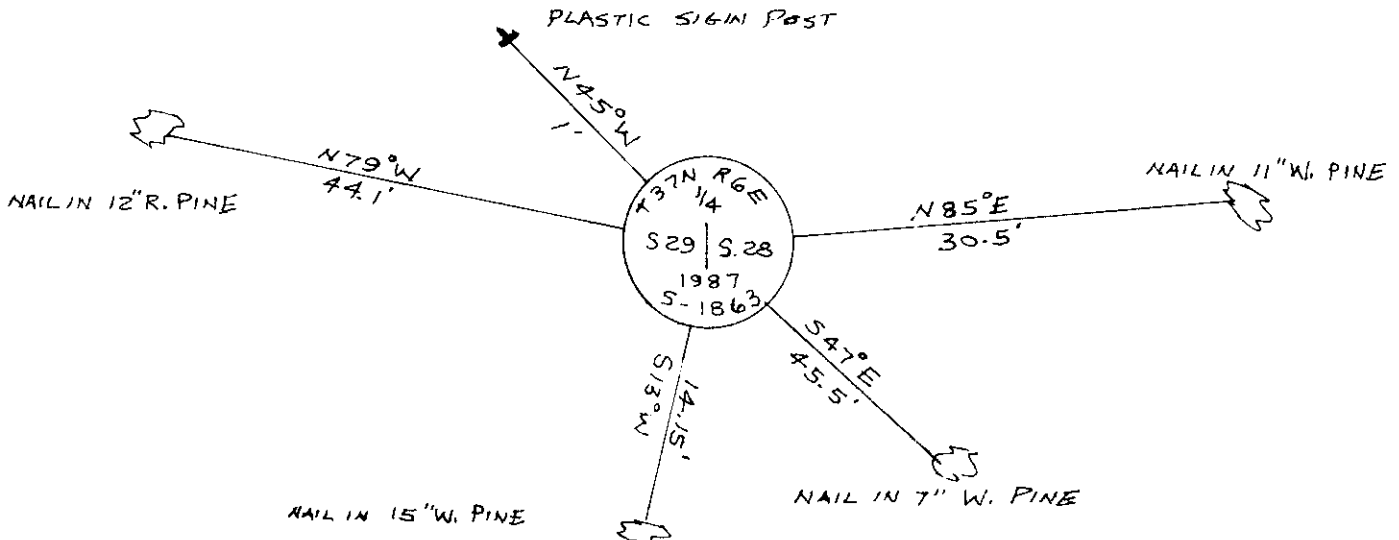
Birch	8"	S37°E	20 lbs
Hemlock	6"	S81°W	37 lbs

Accepted 1" iron pipe found in place, 7"x7" square sciled wood post.

White Pine	15"	S13°W	14 feet
White Pine (stump)	18"	N15°W	28 feet

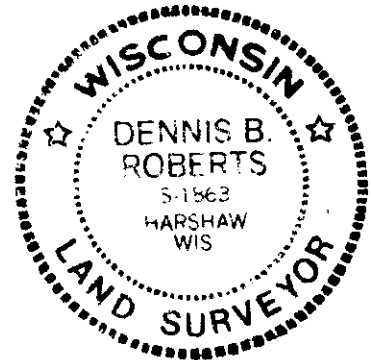
Replaced 1" iron pipe with Oneida County 2" diameter 30" long aluminum pipe, with a 3" diameter aluminum tablet stamped to identify corner.

(c) (d) (e) Plan view of corner with ties to at least 4 witness monuments. If in disagreement with previously established corner, show the distances between the two corners and also indicate the ties to the disputed corner.



(i) I, Dennis B. Roberts  
 (type or print name) certify that the corner location on this record was determined by me or under my direction and control and that this U.S. Public Land Survey Monument Record is correct and complete to the best of my knowledge and belief.

Dennis B. Roberts      7/9/87  
 Signature                                  Date



Index No. 19

T-9

370629-000