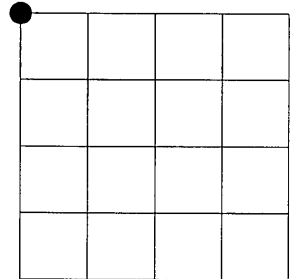


# U.S. PUBLIC LAND SURVEY MONUMENT RECORD

NOTE: This form is intended and designed to fulfill all requirements of Wisconsin Administrative Code, Chapter A-E 7.08 U.S. Public Land Survey Monument Record (3)(a)(b)(c)(d)(e)(f)(g)(h)(i). An additional sheet may be added if necessary to conform with said requirements.

(a) Corner location: Township 37 North  
 Range 6 East  
 Town of Cassian  
 Oneida County, Wisconsin



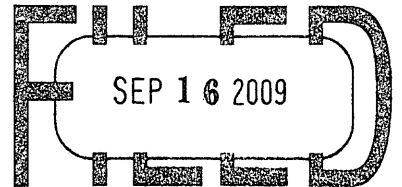
Section 32

(b)(f)(g)(h) Description of monument found at this corner and if it was accepted, state all evidence (material, testimonial, occupational, plats, records, other monuments) used as a basis for accepting. If not accepted or if nothing was found, state evidence used as basis for establishing location. If reestablished through lost corner proportionate methods, indicate all monuments, distances and directions used to establish. Indicate type of monument found or set and sign post.

1863 - JOSEPH H. JENKINS SET POST COMMON TO SECTIONS 19, 30, 31 & 32, TOWN 37 NORTH, RANGE 6 EAST, AND SET FOLLOWING BEARING TREES.  
 WHITE PINE 12", N68°W, 11 LINKS  
 BLK. PINE, N54°E 79 LINKS

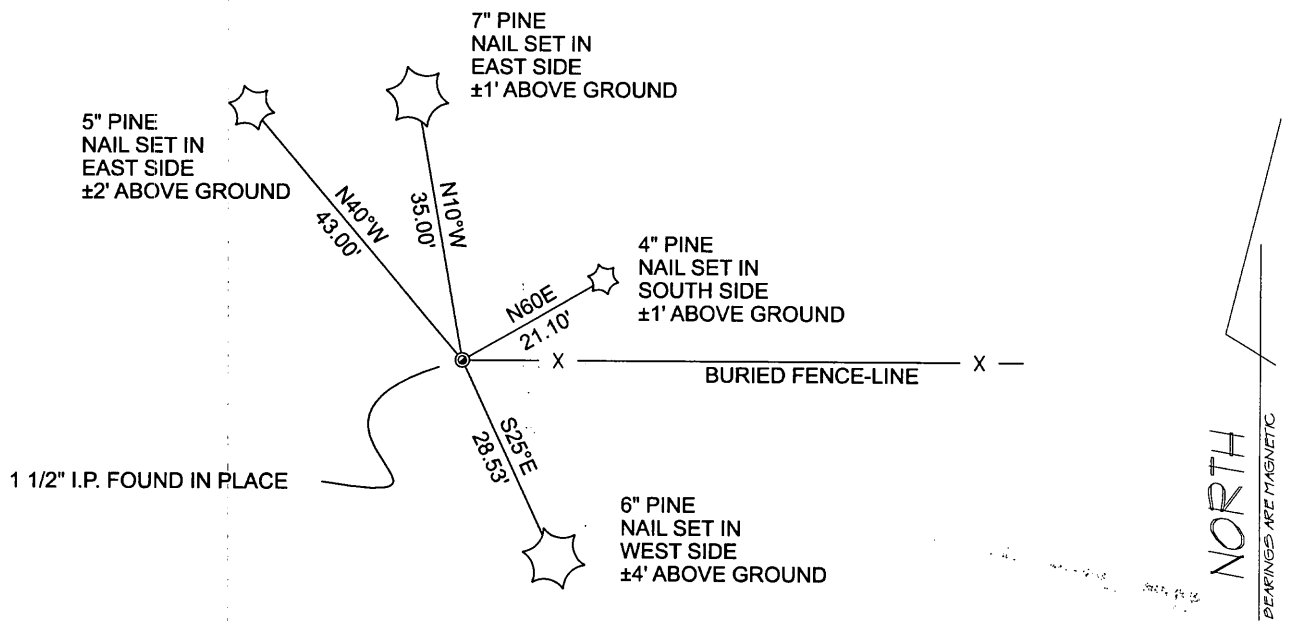
SEE BACK FOR ADDITIONAL HISTORY

REGISTER OF DEEDS OFFICE  
 ONEIDA COUNTY, WIS.



At \_\_\_\_\_ O'Clock \_\_\_\_\_ M  
**THOMAS H. LEIGHTON**  
 REGISTER OF DEEDS

(c)(d)(e) Plan view of corner with ties to at least 4 witness monuments. If in disagreement with previously established corner, show the distances between the two corners and also indicate the ties to the disputed corner.



NOTE: MEASUREMENTS TAKEN TO NAIL HEAD

(i) I, Eugene Uttech, Registered Land Surveyor #S-1451, hereby certify that the corner location on this record was determined by me or under my direction and control and that this U.S. Public Land Survey Monument Record is correct and complete to the best of my knowledge and belief.

*Eugene C. Uttech*  
 Signature

7/28/09  
 Date



Index No.

15

3706300000

Northwest corner Section 32, T.37 N., R.6 E.

History continued:

October 25, 1905 - B.F. Dorr, County Surveyor field book 24, page 46 refers to SW corner of Section 29 and measured East  $80.58 \frac{2}{3}$  chains. (Note:  $80.58 \frac{2}{3}$  chains = 5318.72 feet which divided by 2 = 2659.36 feet. We measured 2661.86 feet.)

In County Surveyors files I found Owens-Illinois survey map prepared by W.H. Stuth, dated 8/21/86 with a note, surveyed -1961. Map reference "iron pipe at this corner by others" and ties: 12" J.P. N.22°E. 8.0 feet & 14"W.P. S.22°W., 12.0 feet. This area had been logged and no ties were found.

December 1976, - by Arvin M. Hess, County Surveyor files B-5079 drafted a long range plan subdivision which referenced to iron pipe found at this corner, with note "wit. owen ill. found". Hess also reference to iron pipe set at the Northeast corner of the NW.1/4 of the NW.1/4. Hess also reference that he found N.1/4 corner.

Certified Survey Map Volume 3, page 677, dated 12/26/78, by A.M. Hess reference to this corner as iron pipe found, owen ill.

Certified Survey Map Volume 3, page 878, dated 4-18-81, by A.M. Hess reference to this corner as iron pipe found, owen ill.

August 13, 2008, Plat of Survey by R. Michael Haynes, County Survey files L-2540, referenced to iron pipe found at the Northwest corner of the NE.1/4 of the NW.14 and measured 1330.93 feet to the North  $\frac{1}{4}$  corner.

January 07, 2009, MSA Professional Services by Eugene C. Uttech, found 1  $\frac{1}{2}$ " diameter iron pipe at this corner. Measured 1330.93 feet to 1  $\frac{1}{2}$ " dia. iron pipe found at Northeast corner of NW.1/4 of the NW.1/4, and 1330.93 feet to the North  $\frac{1}{4}$  corner. I also found old fence line down and running East from iron pipe. I believe iron pipe found to be the same pipe referenced by Hess, as owen ill. I accepted iron pipe found as corner of record and tied off as shown.