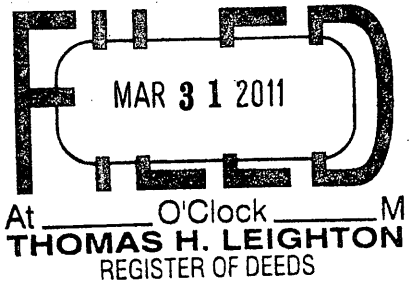


U.S. PUBLIC LAND SURVEY MONUMENT RECORD

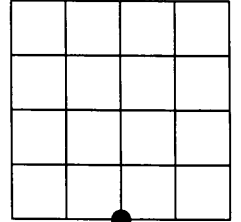
Note: This form is intended and designed to fulfill all requirements of the Wisconsin Administrative Code, Chapter A-E 7.08 U.S. Public Land Monument Record (3)(a)(b)(c)(d)(e)(f)(g)(h)(i). An additional sheet may be added if necessary to conform with said requirements.

REGISTER OF DEEDS OFFICE
ONEIDA COUNTY, WIS.



(a) CORNER LOCATION:
South quarter corner of Section 30
Township 37 North
Range 6 East
Town of Cassian
County of Oneida
Wisconsin

COORDINATES
North: 172747.0355
East: 168143.9607
Control Station: OC 275
Latitude: 45° 38' 41.06726" N
Longitude: 89° 44' 58.35638" W
Datum: NAD- 83 (1991)
Method: RTK - Direct



SECTION 30

(b) HISTORY OF ORIGINAL CORNER ESTABLISHMENT

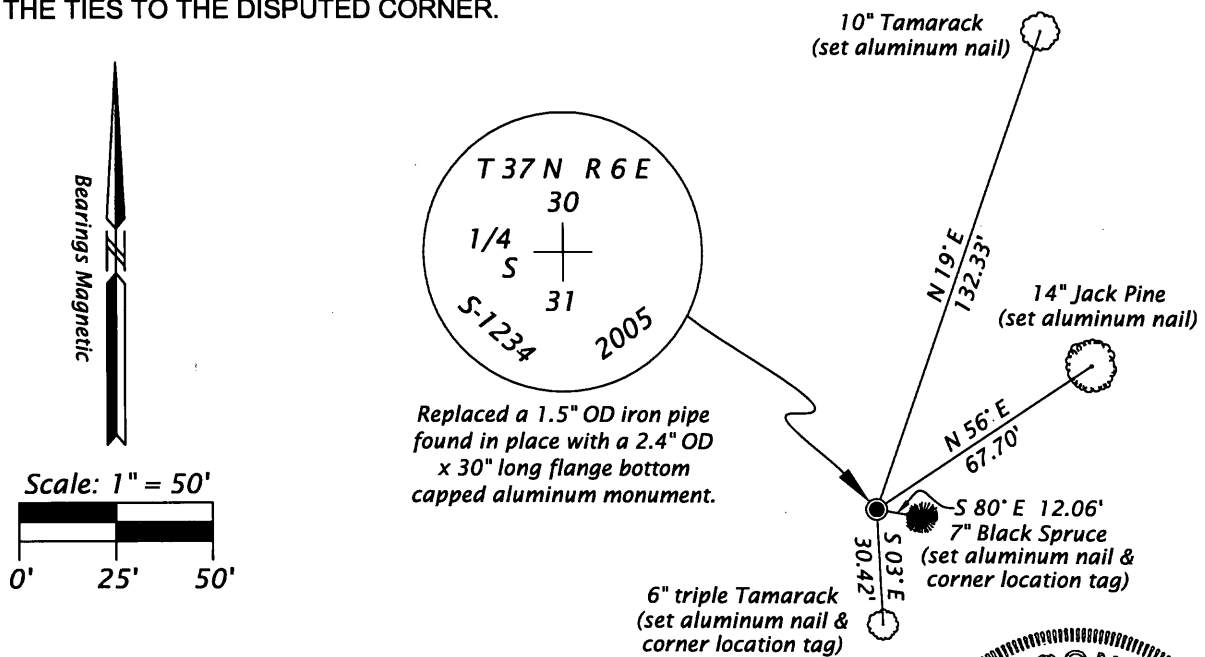
Original Surveyor: Joseph H. Jenkins - Set 1/4 Section post	Original B.T.'S:
Date of Survey: Commenced - June 26, 1863	8" Blk. Pine; S 27° W; 40 links
Completed - July 8, 1863	10" Blk. Pine; N 8° E; 11 links

(f)(g)(h) DESCRIPTION OF MONUMENT FOUND AT THIS CORNER AND IF IT WAS ACCEPTED, STATE ALL EVIDENCE (MATERIAL, TESTIMONIAL, OCCUPATIONAL, PLATS, RECORDS, OTHER MONUMENTS) USED AS A BASIS FOR ESTABLISHING LOCATION. IF NOT ACCEPTED OF IF NOTHING WAS FOUND, STATE EVIDENCE USED AS BASIS FOR ESTABLISHING LOCATION. IF REESTABLISHED THROUGH LOST CORNER PROPORTIONATE METHODS, INDICATE ALL MONUMENTS, DISTANCES AND DIRECTIONS USED TO ESTABLISH. INDICATE TYPE OF MONUMENT AND SIGN POST FOUND OR SET.

03/10/1987 - William H. Stuth, Registered Land Surveyor, prepared field notes for an Owens-Illinois Ownership Boundary Search, dated 08/21/1986, in Section 31, indicating set iron pipe or cap for corner by proportionate methods between Northeast and Northwest section corners by others. Notes bearing trees; 8" Spruce, S 67° E, 8.0'; and 6" Spruce, S 0°, 13.0'.

07/22/2005 - I, James D. Rein, Registered Land Surveyor No. S-1234, found a 1.5" OD iron pipe up 18" with a 3"x 3" cedar post in place. I set a 2.4" OD x 30" long flange bottom capped aluminum monument in its place and made and scribed four (4) new bearing trees as shown in the sketch below.

(c)(d)(e) PLAN VIEW OF CORNER WITH TIES TO AT LEAST 4 WITNESS MONUMENTS. IF IN DISAGREEMENT WITH PREVIOUSLY ESTABLISHED CORNER, SHOW THE DISTANCE BETWEEN THE TWO CORNERS AND ALSO INDICATE THE TIES TO THE DISPUTED CORNER.



(i) I, JAMES D. REIN, REGISTERED LAND SURVEYOR NO. S-1234 HEREBY CERTIFY THAT THE CORNER LOCATION ON THIS RECORD WAS DETERMINED BY ME OR UNDER MY DIRECTION AND CONTROL AND THAT THIS U.S. PUBLIC LAND SURVEY MONUMENT RECORD IS CORRECT AND COMPLETE TO THE BEST OF MY KNOWLEDGE AND BELIEF.

SIGNATURE

3-28-11
DATE



3706300020

INDEX NO. 3706300020
V3