

CERTIFIED LAND CORNER RESTORATION

State of Wisconsin }
County of Oneida } ss.

I, Gerald B. Inman, do hereby certify that on the 31st day of March, 1980, we found evidence of the North East Section corner of Section 6 Township 36N Range 6E, Fourth Principal Meridian, as described hereon; and that from this evidence I established a new monument and accessories as described hereon to perpetuate the original location of this corner.

Description of original monument and accessories and subsequent restorations:

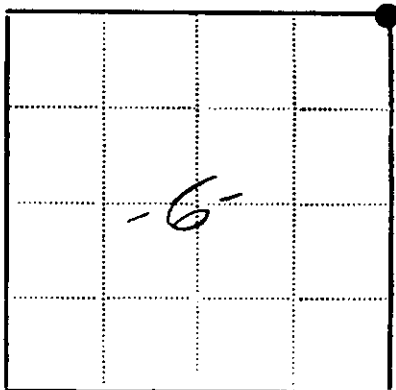
Wood Post
Yellow Pine 6" S88°E, 53 lks.
Blk. Pine 10" S58°W, 61 lks.

Description of corner evidence found:

Monument = 6 x 6 concrete, 1' below surface of Blacktop Road
Bts found = 9" J. Pine stump S51°W, 66.4 feet
7" J. Pine stump S30°E, 39.3 feet

Description of monument and accessories ^{we} established to perpetuate the location of this corner:

Set 1" iron pipe over concrete monument
Made Bts
Nail in 12" W. Pine S55°E, 36.7 feet
Nail in 3" W. Pine S18°W, 19.1 feet
1" iron pipe S60°E, 4.4 feet flush in Blacktop road.



● - Corner monument restored
□ -

Witnesses Robert W. Conner, Jr.

Dated at Minocqua Wisconsin, this 31st day of March 1980.

Signature *Gerald B. Inman* Title Registered Land Surveyor
(County Surveyor, Registered Land Surveyor, or other duly authorized official)

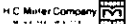
Surveyors Registration No. S-891

Office of Register of Deeds County of Oneida

I hereby certify that the within instrument was filed in this office for record on the 11 day of June 1980, and was filed in Book No. Page No. of County Records.

Signature *Doris Herag...* Title Register of Deeds
Cyrena A. Piles, Deputy

Township 36N Range 6E Section Index No. Page No.



Stock No. 26273

U.S. PUBLIC LAND SURVEY MONUMENT RECORD

Index No. Z 5

State of Wisconsin }
County of Oneida } ss.

I John H. Fisher, do hereby
certify that on the 25th day
of July 19 84, I found
evidence of the Southwest
corner of Section 32

Township 37 North, Range
6 East, Fourth Principal Meridian,

as described hereon; and that from this evidence
I established a new monument and accessories
as described hereon to perpetuate the original
location of this corner.

Resident witnesses:

None

History of original corner establishment:
The original Government Survey was performed by Alfred Millard,
Deputy Surveyor in 1860.

Wood post set:
Yellow Pine 12" S32°W 6.66 lks

Description of corner evidence found:

1" iron pipe in centerline Swamp Lake Road
1" iron pipe South 33.0 feet
White Pine 16" S15°E 17.1 feet

Description of monument and accessories I established to perpetuate the original location of this corner.
Set Oneida County Berntsen Aluminum Monument
stamped to identify corner.
Balazed and scribed the following new bearing trees:
Set nails in:

Red Pine	16"	S12°E	44.0 feet
Red Pine	16"	S64°W	93.2 feet
Red Pine	6"	N35°E	56.2 feet

Dated at Minocqua, Wis., this 24th day of July, 1985

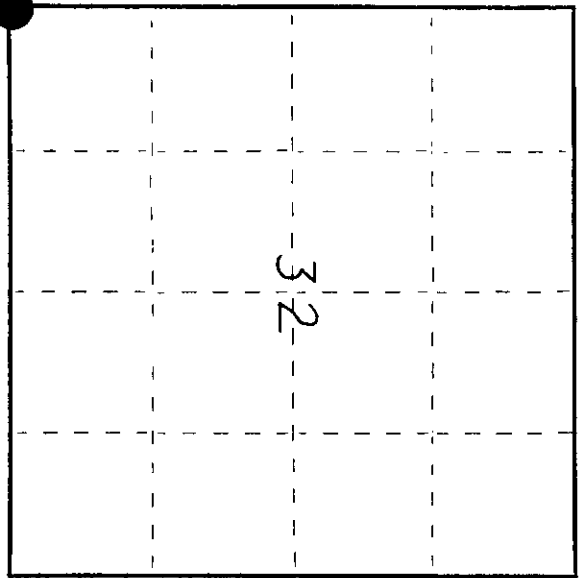
Signature: *John H. Fisher* Title Registered Land Surveyor Registration No. S-836
(County Surveyor, Registered Land Surveyor, or other duly authorized official)

Office of Register of Deeds, County of Oneida
Instrument was filed in this office for record on the 11 day of June, 1986
at 4:00 o'clock P. M.

I hereby certify that the within

Signature: *Doris L. Fisher*
(Register of Deeds)

By: *Supervisor A. D. ...* Deputy



3706 310000

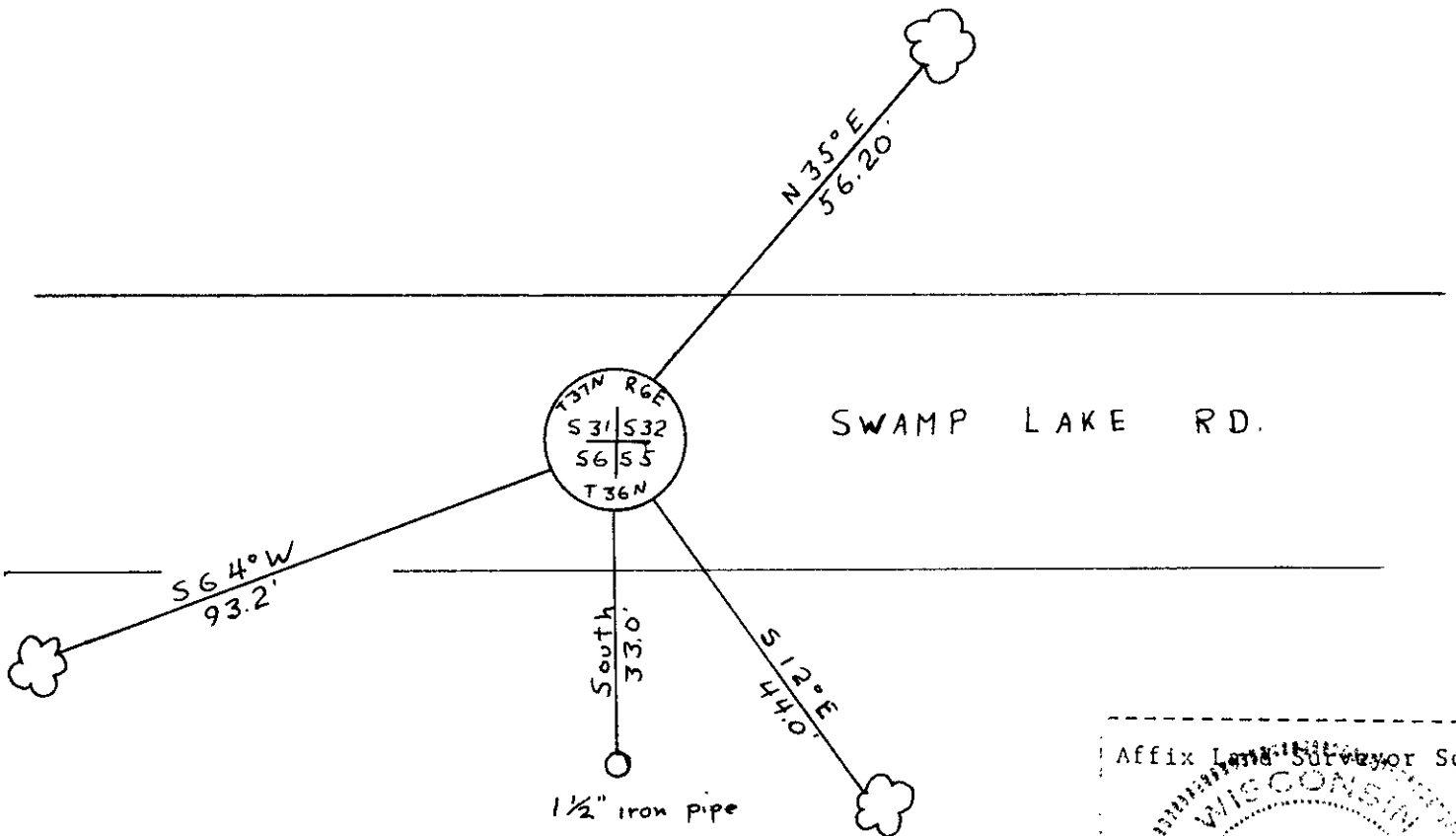
(e) Describe any material discrepancy between the location of the corner as restored or reestablished and the location of that corner as previously restored or reestablished by distance and direction. Show the discrepancy on the plan view drawing under (d), above. Show the distances between the corner as previously restored or reestablished and (1) the corner as restored or reestablished, and (2) to at least 2 of the witness monuments shown on the drawing in (d), above.

See drawing below

(f) Was the corner restored through acceptance of (1) an obliterated evidence location, or, (2) a found perpetuated location?

Found perpetuated location

(g&h) Was the corner reestablished through lost corner proportionate methods? If so, show the method, including the directions and distances to other public land survey corners used as evidence or used for proportioning in determining the corner location?



(i) I, John H. Fisher
 (type or print name) certify that the corner location shown on this record was determined by me or under my direction and control and that this U.S. Public Land Survey Monument Record is correct and complete to the best of my knowledge and belief.

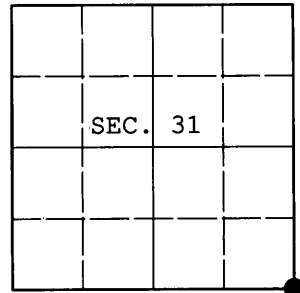
John H. Fisher
 Signature

7/24/85
 Date

U.S. PUBLIC LAND SURVEY MONUMENT RECORD

Note: This form is intended and designed to fulfill all requirements of Wisconsin Administrative Code, Chapter A-E 7.08 U.S. Public Land Survey Monument Record (3) (a) (b) (c) (d) (e) (f) (g) (h) (i). An additional sheet may be added if necessary to conform with said requirements.

(a) CORNER LOCATION: WISCORS (Oneida County)
 Cor. of Secs. 5, 6, 31 & 32 N: 167,427.595 USft
 Township 36 & 37 North E: 170,817.815 USft
 Range 6 East of the 4th P.M. Datum: NAD 1983(2011)
 Town of Nokomis and Cassian County of Oneida



(b) HISTORY OF ORIGINAL CORNER ESTABLISHMENT

Original Surveyor: Alfred Millard Original Accessories:
 Date of Survey: Commenced: Sept., 1860 y. pine 12" S32°W, 666 lks.
 Completed: Sept., 1860

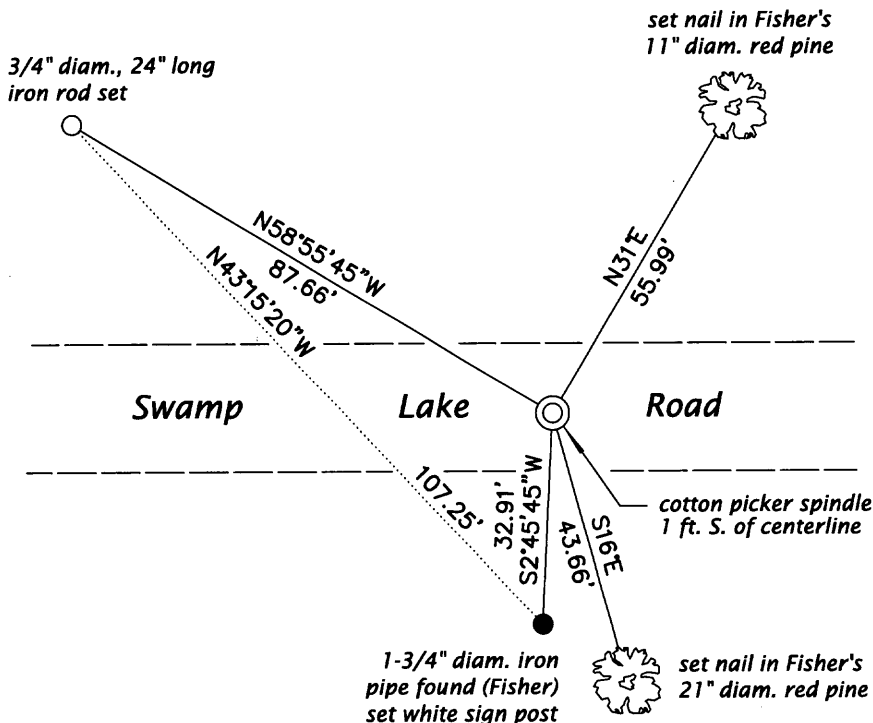
(b) (f) (g) (h) Description of monument found at this corner and if it was accepted, state all evidence (material, testimonial, occupational, plats, records, other monuments) used as a basis for accepting. If not accepted or if nothing was found, state evidence used as basis for establishing location. If re-established through lost corner proportionate methods, indicate all monuments, distances and directions used to establish. Indicate type of monument and sign post found or set.

NOTE: This is a perpetuation of a previous USPLS Monument Record by John H. Fisher, RLS dated July 24, 1985 and filed in the office of the Oneida County Register of Deeds. A complete history of the corner can be found on the previous monument record. I accept the previous location as a true and faithful perpetuation or reestablishment of the original corner location and further perpetuate it as follows.

August 17, 2013: Prior to road construction, I found and accepted a perpetuation of Fisher's monument, a PK nail in the pavement of Swamp Lake Road. After construction, I set a cotton picker spindle in the new pavement to replace the PK nail. I found the remains of Fisher's SW bearing tree, a cut stump at record. I found or established accessories as shown below.

The coordinates shown were derived from a direct RTN GPS observation referenced to the WISCORS network.

(c) (d) (e) Plan view of corner with ties to at least 4 witness monuments. If in disagreement with previously established corner, show the distances between the two corners and also indicate the ties to the disputed.

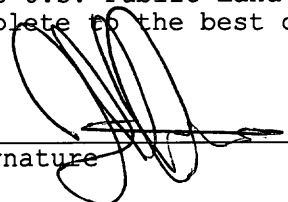


REGISTER OF DEEDS OFFICE
 ONEIDA COUNTY
 FILED

JAN 03 2014

(i) I, Jeffrey W. Austin, Registered Land Surveyor No. S-1885, hereby certify that the corner location on this record was determined by me or under my direction and control and that this U.S. Public Land Survey Monument Record is correct and complete to the best of my knowledge and belief.

AT _____ O'CLOCK _____ M
 KYLE J. FRANSON
 REGISTER OF DEEDS


 Signature

DEC. 24, 2013
 Date