

CERTIFIED LAND CORNER RESTORATION

State of Wisconsin }
County of Oneida } ss.

I, Gerald B. Inman, do hereby certify that on the 31st day of March, 1980, we found evidence of the North one-quarter corner of Section 6, Township 36N, Range 6E, Fourth Principal Meridian, as described hereon; and that from this evidence I established ~~a new monument and~~ accessories as described hereon to perpetuate the original location of this corner:

Description of original monument and accessories and subsequent restorations:

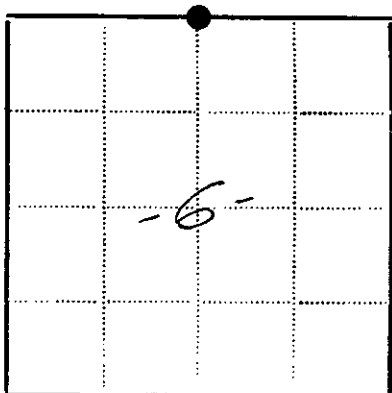
wood post
12" W. Pine S22°E, 65 lks.
7" Y. Pine N11"E, 45 lks.

Description of corner evidence found:

Bearing Trees
22" N. Pine S56°E, 44.3 feet to face of blaze
9" J. Pine S30°W, 36.9 feet

Description of ~~monument and~~ accessories ^{we} established to perpetuate the location of this corner:

Set 2" iron pipe for one-quarter corner
also measured to one more b.t.
10" J. Pine S62°W, 13.5 feet



● - Corner monument restored
□ -

~~Witness~~ witnesses Robert W. Conner, Jr.

Dated at Minocqua Wisconsin, this 31st day of March 1980.

Signature *Gerald B. Inman* Title Registered Land Surveyor
(County Surveyor, Registered Land Surveyor, or other duly authorized official)

Surveyors Registration No. S-891

Office of Register of Deeds County of Oneida

I hereby certify that the within instrument was filed in this office for record on the 11 day of June 1980, and was filed in Book No. _____ Page No. _____ of County Records.

Signature *Doris Vorage Pugh* Title Register of Deeds
Cynthia A. Pugh, Deputy

Township 36N, Range 6E, Section 6, Index No. _____, Page No. _____

Stock No. 26273

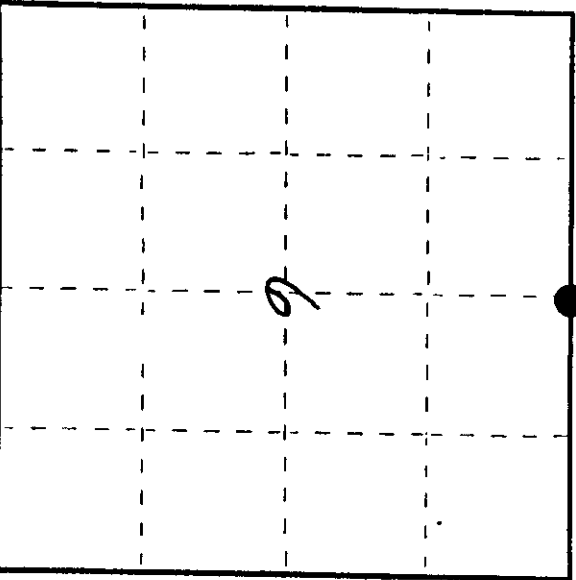
Stock No. 26272

State of Wisconsin }
County of Oneida } ss.

I, John H. Fisher, do hereby certify that on the 25th day of July, 1984, I found evidence of the North one quarter corner of Section 6, Township 36 North, Range 6 East, Fourth Principal Meridian, as described hereon; and that from this evidence I established a new monument and accessories as described hereon to perpetuate the original location of this corner.

Resident witnesses:

None



● - Corner monument restored.

CERTIFIED LAND CORNER RESTORATION
U.S. PUBLIC LAND SURVEY MONUMENT RECORD
History of original corner establishment:

Index No. A-3

The original Government survey was performed by Alfred Willard, Deputy Surveyor August, 1860

Set wood posts
White Pine 18" N35°E 8 links
White Pine 18" N69°W 43 links

Description of corner evidence found:

2" Iron pine and Cedar post 5" x 5"
22" Norway Pine S56°E 45.07 feet
10" Jack Pine S30°W 37.15 feet

Description of monument and accessories I established to perpetuate the original location of this corner.
Corner in good condition
Set nails in old B.T.'s

Norway Pine 22" S56°E 45.07 feet
Jack Pine 10" S30°W 37.15 feet
Set nail in new B.T.'s.

Norway Pine 8" N77°W 35.05 feet
White Pine 7" S 8°W 52.40 feet

Dated at Minocqua, Wis., this 25th day of August, 1984.

Signature *John H. Fisher* Title Registered Land Surveyor Registration No. S-836
(County Surveyor, Registered Land Surveyor, or other duly authorized official)

Office of Register of Deeds, County of _____, I hereby certify that the within instrument was filed in this office for record on the _____ day of _____, 19____ at _____ o'clock _____ M.

(Register of Deeds)

By _____ Deputy

02001390L3

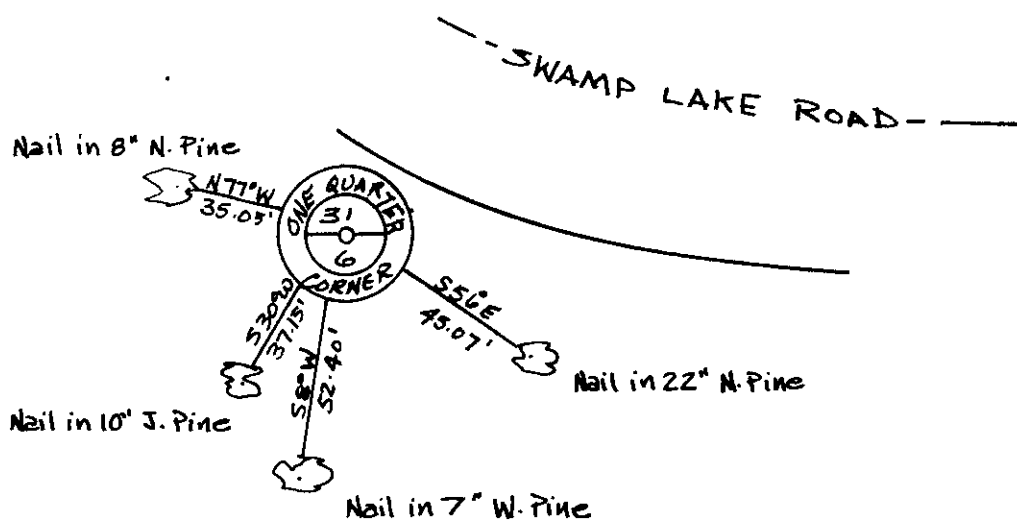
(c) Describe any material discrepancy between the location of the corner as restored or reestablished and the location of that corner as previously restored or reestablished by distance and direction. Show the discrepancy on the plan view drawing under (d), above. Show the distances between the corner as previously restored or reestablished and (1) the corner as restored or reestablished, and (2) to at least 2 of the witness monuments shown on the drawing in (d), above.

See sketch

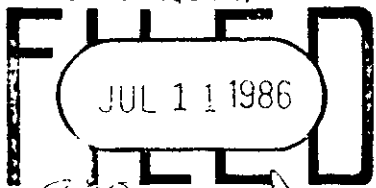
(f) Was the corner restored through acceptance of (1) an obliterated evidence location, or, (2) a found perpetuated location?

Found perpetuated

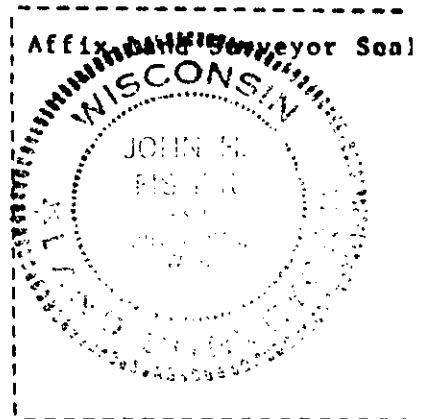
(g&h) Was the corner reestablished through lost corner proportionate methods? If so, show the method, including the directions and distances to other public land survey corners used as evidence or used for proportioning in determining the corner location?



REGISTER OF DEEDS OFFICE
ONEIDA COUNTY, WIS.



At 8:00 O'Clock A.M.
DORIS VERAGE KUEHN
REGISTER OF DEEDS



(i) I, John H. Fisher
(type or print name) certify that the corner location shown on this record was determined by me or under my direction and control and that this U.S. Public Land Survey Monument Record is correct and complete to the best of my knowledge and belief.

John H. Fisher
Signature

8/20/84
Date