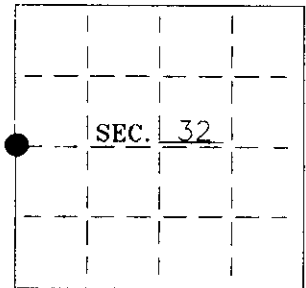


U. S. PUBLIC LAND SURVEY MONUMENT RECORD

Note: This form is intended and designed to fulfill all requirements of Wisconsin Administrative Code—Chapter A-E 7.08 U. S. Public Land Survey Monument Record (3(a)(b)(c)(d)(e)(f)(g)(h)(i)). An additional sheet may be added if necessary to conform with said requirements.

(a) CORNER LOCATION: State Plane Coordinates
W1/4 Corner of Sec. 32 X _____
 Township 37 North Y _____
 Range 6 East Datum Base _____
 Town Cassain County of Oneida



(b) HISTORY OF ORIGINAL CORNER ESTABLISHMENT: Original B.T.'S:
 Original Surveyor: J.H. Jenkins Blk Pine 8" N55°E, 9 lks
 Date of Survey: Commenced: June 1863 Blk Pine 5" N88°W, 15 lks
 Completed: July 1863

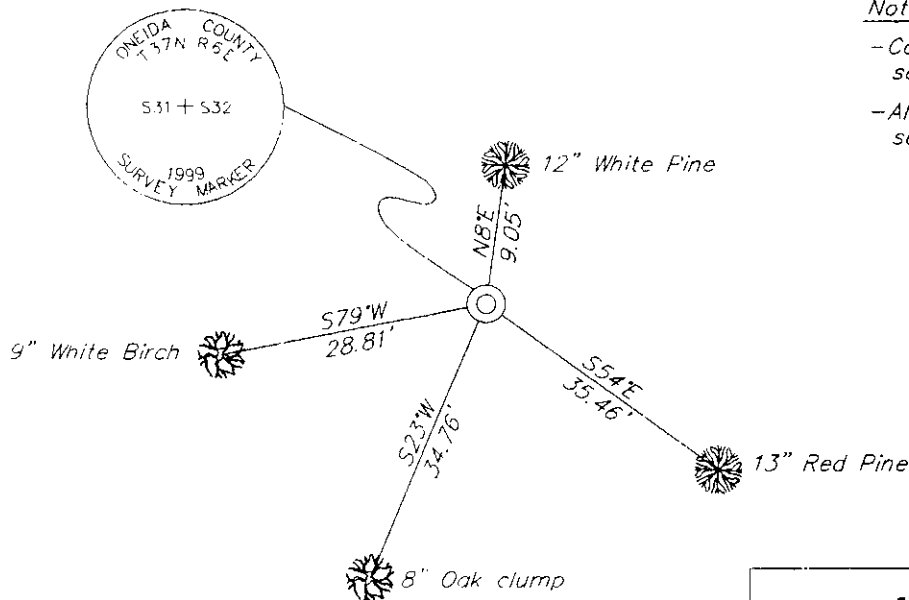
(b)(f)(g)(h) Description of monument found at this corner and if it was accepted—state all evidence (material—testimonial—occupation—plats—records—other monuments) used as a basis for accepting. If not accepted or if nothing was found state evidence used as basis for establishing location. If reestablished through lost corner proportionate methods indicate all monuments—distances and directions used to establish. Indicate type of monument and sign post found or set.

1863 - J.H. Jenkins set 1/4 section post.

1999 - I found a 1-1/2" iron pipe in a hole with remains of a wood post around the iron pipe. I found a fence post adjacent with a W.C.D. metal marker tag indicating 1/4 corner location. I found stump holes matching the original BT calls. I replaced the 1-1/2" iron pipe with an Oneida County Aluminium Monument and made 4 new BT's as shown on sketch below.

(c)(d)(e) Plan view of corner with ties to at least 4 witness monuments. If in disagreement with previously established corner—show the distances between the two corners and also indicate the ties to the disputed.

Oneida County Aluminium Monument set.

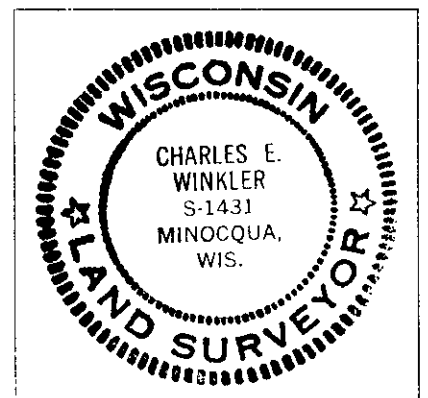


Note:

- Carsonite post set ±1' North.
- Aluminium nails set in each BT.

(i) I Charles E. Winkler S-1431 hereby certify that the corner location on this record was determined by me or under my direction and control and that this U.S. Public Land Survey Monument Record is correct and complete to the best of my knowledge and belief.

Charles E. Winkler 1/4/2001
 Signature Foltz and Associates, Inc. Date



INDEX NO.

X
5

370631 20 00