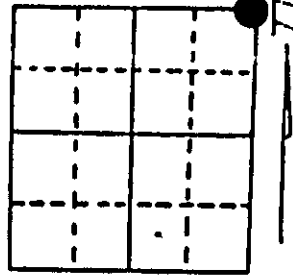


U.S. PUBLIC LAND SURVEY MONUMENT RECORD

Note: This form is intended and designed to fulfill all requirements of Wisconsin Administrative Code, Chapter A-E 7.08 U.S. Public Land Survey Monument Record (3) (a) (b) (c) (d) (e) (f) (g) (h) (i). An additional sheet may be added if necessary to conform with said requirements.

(a) Corner location: Township 36 North
 Range 6 East/West



Section 5

Town/City/Village Nokomis
 County Oneida

(b) (f) (g) (h) Description of monument found at this corner and if it was accepted, state all evidence (material, testimonial, occupational, plats, records, other monuments) used as a basis for accepting. If not accepted or if nothing was found, state evidence used as basis for establishing location. If reestablished through lost corner proportionate methods, indicate all monuments, distances and directions used to establish. Indicate type of monument found or set and sign post.

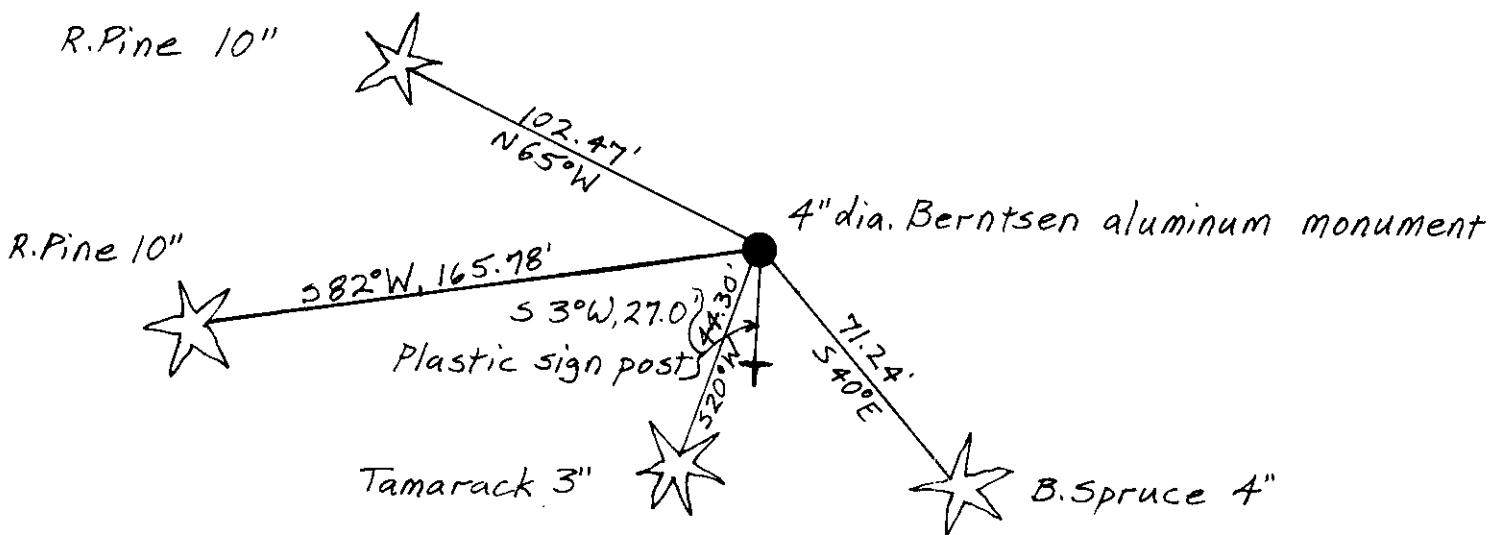
September, 1860, Alfred Millard set a wood post: Y.Pine 12" S86W, 1451ks., no other tree near.

9-12-79, James Marquardt USPLS record shows corner as Oneida County Berntsen Monument: J.Pine 8" N62W, 88.7', N.Pine 8" N70W, 102.4', N.Pine 6" S78W, 165.3'.

5-16-89, I found and accepted a 4" dia. aluminum Berntsen Monument 5" below pavement: set spike in N.Pine 10" N65W, 102.47', set spike in N.Pine 10" S82W, 165.78', set spike in Tamarack 3" S20W, 44.30', set spike in B.Spruce 4" S40E, 71.24', set plastic survey marker sign S3W, 27.0'.

(c) (d) (e) Plan view of corner with ties to at least 4 witness monuments. If in disagreement with previously established corner, show the distances between the two corners and also indicate the ties to the disputed corner.

Distances to nail in side of tree



(i) I, JEFFREY W. AUSTIN S-1885
 (type or print name) certify that the corner location on this record was determined by me or under my direction and control and that this U.S. Public Land Survey Monument Record is correct and complete to the best of my knowledge and belief.

Signature *Jeffrey W. Austin* Date JUNE 30, 1989



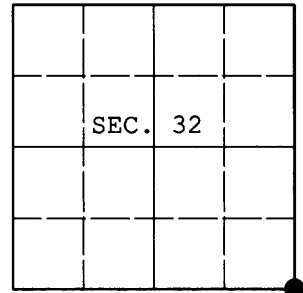
Index No. A-9

3706320000

U.S. PUBLIC LAND SURVEY MONUMENT RECORD

Note: This form is intended and designed to fulfill all requirements of Wisconsin Administrative Code, Chapter A-E 7.08 U.S. Public Land Survey Monument Record (3) (a) (b) (c) (d) (e) (f) (g) (h) (i). An additional sheet may be added if necessary to conform with said requirements.

(a) CORNER LOCATION: WISCORS (Oneida County)
 Cor. of Secs. 4, 5, 32 & 33 N: 167,355.282 USft
 Township 36 & 37 North E: 176,130.271 USft
 Range 6 East of the 4th P.M. Datum: NAD 1983(2011)
 Town of Nokomis and Cassian County of Oneida



(b) HISTORY OF ORIGINAL CORNER ESTABLISHMENT

Original Surveyor: Alfred Millard Original Accessories:
 Date of Survey: Commenced: Sept., 1860 y. pine 12" S86°W, 145 lks.
 Completed: Sept., 1860

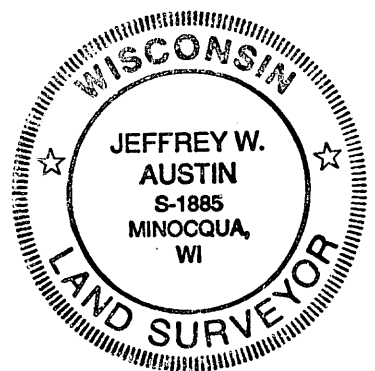
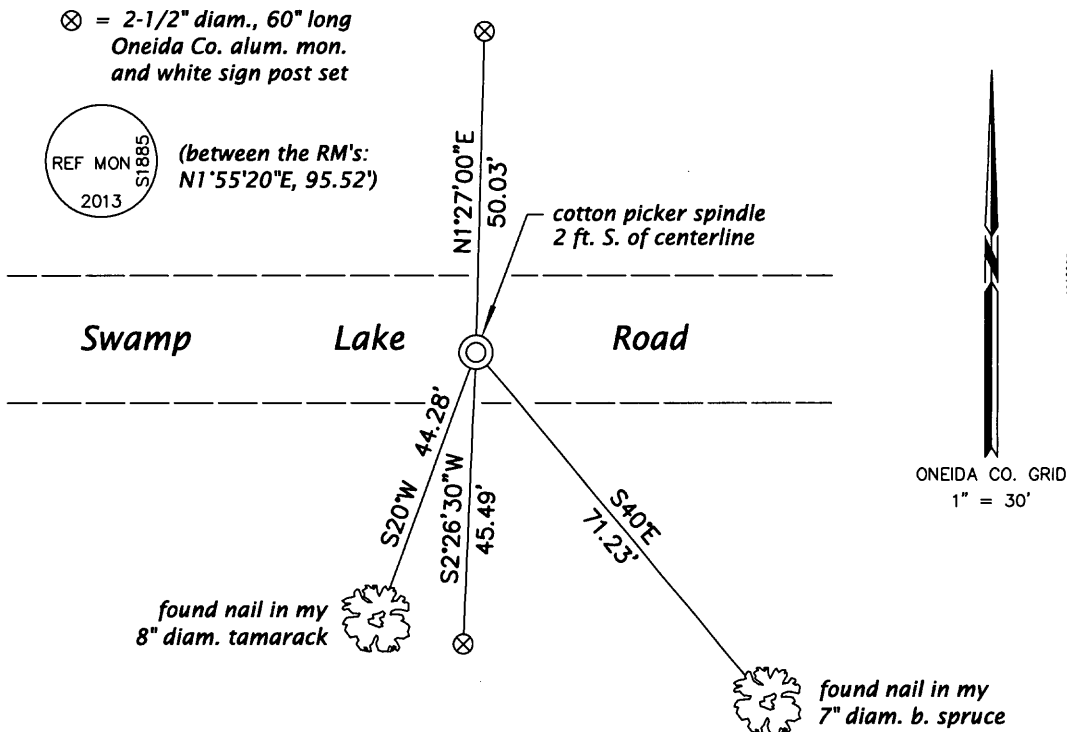
(b) (f) (g) (h) Description of monument found at this corner and if it was accepted, state all evidence (material, testimonial, occupational, plats, records, other monuments) used as a basis for accepting. If not accepted or if nothing was found, state evidence used as basis for establishing location. If re-established through lost corner proportionate methods, indicate all monuments, distances and directions used to establish. Indicate type of monument and sign post found or set.

NOTE: This is a perpetuation of a previous USPLS Monument Record by Jeffrey W. Austin, RLS dated June 30, 1989 and filed in the office of the Oneida County Register of Deeds. A complete history of the corner can be found on the previous monument record. I accept the previous location as a true and faithful perpetuation or reestablishment of the original corner location and further perpetuate it as follows.

August 25, 2013: Prior to road construction, I found and accepted a perpetuation of my monument, a PK nail in the pavement of Swamp Lake Road. After construction, I set a cotton picker spindle in the new pavement to replace the PK nail. I found or established accessories as shown below.

The coordinates shown were derived from a direct RTN GPS observation referenced to the WISCORS network.

(c) (d) (e) Plan view of corner with ties to at least 4 witness monuments. If in disagreement with previously established corner, show the distances between the two corners and also indicate the ties to the disputed.



REGISTER OF DEEDS OFFICE
 ONEIDA COUNTY
 FILED

JAN 03 2014

AT _____ O'CLOCK _____ M
 KYLE J. FRANSON
 REGISTER OF DEEDS

(i) I, Jeffrey W. Austin, Registered Land Surveyor No. S-1885, hereby certify that the corner location on this record was determined by me or under my direction and control and that this U.S. Public Land Survey Monument Record is correct and complete to the best of my knowledge and belief.

Signature

DEC 24, 2013
 Date