

Stock No. 26273

U.S. PUBLIC LAND SURVEY MONUMENT RECORD

Index No. Z 7

State of Wisconsin

County of Oneida } ss.

I John H. Fisher 1st. do hereby certify that on the 1st. day of September 1984, I found evidence of the South one quarter corner of Section 32 Township 37 North, Range 6 East, Fourth Principal Meridian, as described hereon; and that from this evidence I established a new monument and accessories as described hereon to perpetuate the original location of this corner.

Resident witnesses:

None

History of original corner establishment:

The original Government survey was performed by Alfred Willard, Deputy Surveyor in 1860.

Wood post set:

Sp. Pine 10" N89°W 185 lks

Description of corner evidence found:

PK nail in intersection of Roads Jack Pine "dead" 16" S54°W 47.2 feet

Reproduction of original bearing and accessories established to perpetuate the original location of this corner. stamped to identify corner. Blazed and scribed the following new bearing trees. Set nail in:

Red Pine	12"	N47°W	89.1 feet
Red Pine	10"	N21°W	136.7 feet
Red Pine	7"	N23°E	117.4 feet
Red Pine	7"	N71°E	110.6 feet

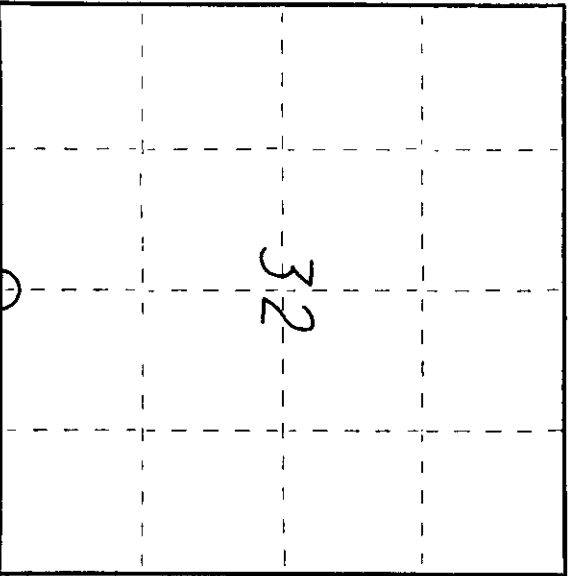
Dated at Minocqua, Wis., this 21st day of July, 1985.

Signature: John H. Fisher Title Registered Land Surveyor Registration No. S-836 (County Surveyor, Registered Land Surveyor, or other duly authorized official)

Office of Register of Deeds, County of Oneida. Instrument was filed in this office for record on the 11th day of June, 1986 at 4:00 o'clock P.M.

By: Doris Harter, Register of Deeds

By: Cynthia A. Ratto, Deputy



○ = Corner monument restored.

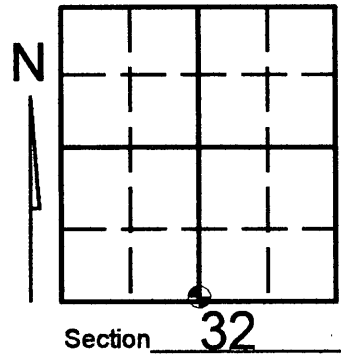
3706320020

U.S. PUBLIC LAND SURVEY MONUMENT RECORD

Note: This form is intended and designed to fulfill all requirements of Wisconsin Administrative Code, Chapter A-E 7.08 U.S. Public Land Survey Monument Record (3)(a)(b)(c)(d)(e)(f)(g)(h)(i). An additional sheet may be added if necessary to conform with said requirements.

(a) Corner location: Township 37 North
Range 06 East/West

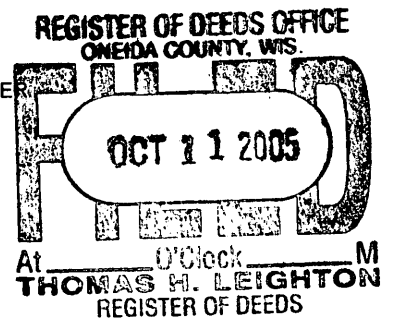
Town/City/Village CASSIAN
County ONEIDA



(b) (f) (g) (h) Description of monument found at this corner and if it was accepted, state all evidence (material, testimonial, occupational, plats, records, other monuments) used as a basis for accepting. If not accepted or if nothing was found, state evidence used as basis for establishing location. If reestablished through lost corner proportionate methods, indicate all monuments, distances and directions used to establish. Indicate type of monument found or set and sign post.

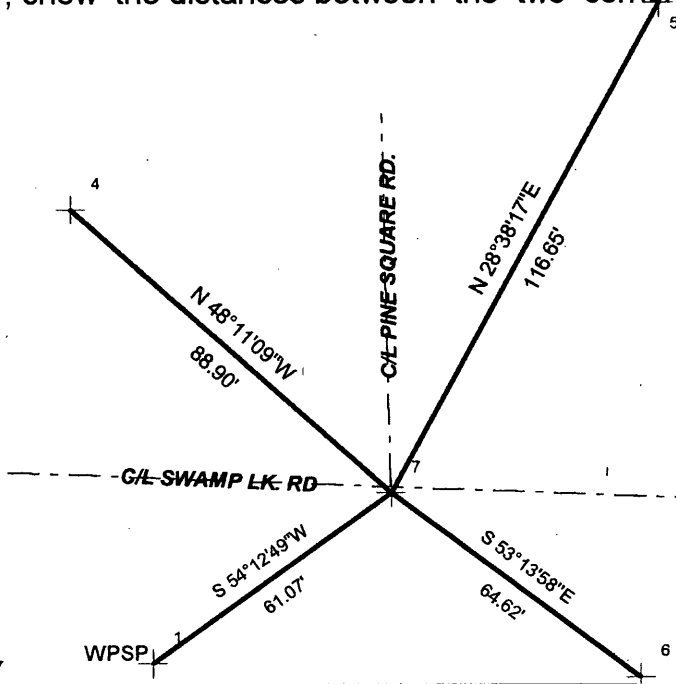
SEE U.P.L.S CORNER FORM Z-7 FOR HISTORY

-JUNE-2005- KEVIN BIXBY FOUND P.K. NAIL AS NOTED ON O.C.S.M. NUMBER C1851 AND WITNESSED AS SHOWN BELOW.



(c) (d) (e) Plan view of corner with ties to at least 4 witness monuments. If in disagreement with previously established corner, show the distances between the two corners and also indicate the ties to the disputed corner.

SCALE: 1" = 40'



ANGLES AND DISTANCES MEASURED WITH TOTAL STATION.
DISTANCES MEASURED TO HEADS OF SPIKES IN B.T.'S

LEGEND

- 1-, -6- SET 1" X 24" IRON PIPE
- 4- SET SPIKE IN 20" REDPINE (EXISTING B.T.)
- 5- SET SPIKE IN 20" REDPINE
- 7- FOUND P.K. NAIL



(i) I, KEVIN P. BIXBY

(type or print name) certify that the corner location on this record was determined by me or under my direction and control and that this U.S. Public Land Survey Monument Record is correct and complete to the best of my knowledge and belief.

Kevin P. Bixby
Signature

07/12/05
Date



Stamp

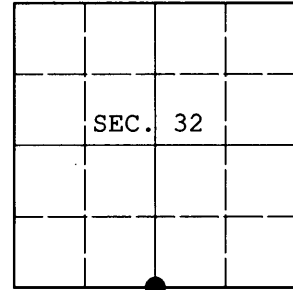
Index No. Z-7

370632 0020

U.S. PUBLIC LAND SURVEY MONUMENT RECORD

Note: This form is intended and designed to fulfill all requirements of Wisconsin Administrative Code, Chapter A-E 7.08 U.S. Public Land Survey Monument Record (3) (a) (b) (c) (d) (e) (f) (g) (h) (i). An additional sheet may be added if necessary to conform with said requirements.

(a) CORNER LOCATION: WISCRS (Oneida County)
 1/4 Cor. of Secs. 5 & 32 N: 167,412.882 USft
 Township 36 & 37 North E: 173,482.984 USft
 Range 6 East of the 4th P.M. Datum: NAD 1983(2011)
 Town of Nokomis and Cassian County of Oneida



(b) HISTORY OF ORIGINAL CORNER ESTABLISHMENT

Original Surveyor: Alfred Millard Original Accessories:
 Date of Survey: Commenced: Sept., 1860 sp. pine 10" N89°W, 185 lks.
 Completed: Sept., 1860

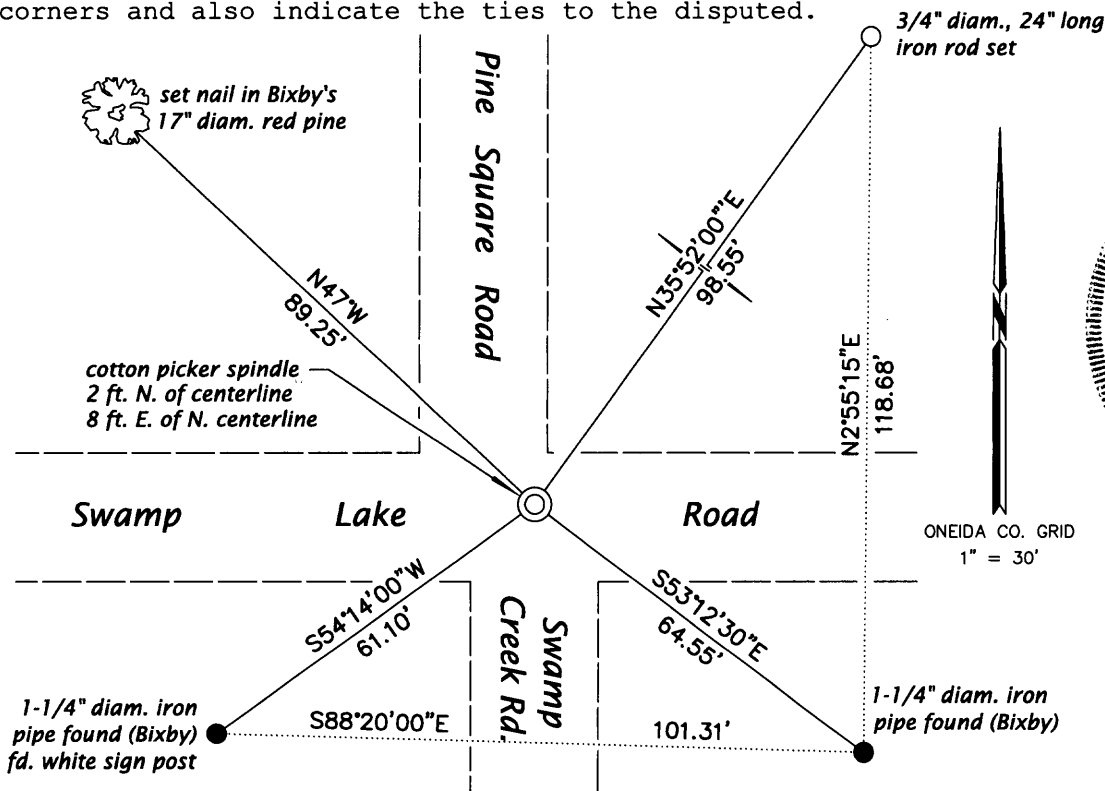
(b) (f) (g) (h) Description of monument found at this corner and if it was accepted, state all evidence (material, testimonial, occupational, plats, records, other monuments) used as a basis for accepting. If not accepted or if nothing was found, state evidence used as basis for establishing location. If re-established through lost corner proportionate methods, indicate all monuments, distances and directions used to establish. Indicate type of monument and sign post found or set.

NOTE: This is a perpetuation of a previous USPLS Monument Record by Kevin P. Bixby, RLS dated July 12, 2005 and filed in the office of the Oneida County Register of Deeds. A complete history of the corner can be found on the previous monument record. I accept the previous location as a true and faithful perpetuation or reestablishment of the original corner location and further perpetuate it as follows.

August 17, 2013: Prior to road construction, I found and accepted a perpetuation of Bixby's location, a Berntsen "survey mark" nail in the pavement of Swamp Lake Road. After construction, I set a cotton picker spindle in the new pavement to replace the survey mark nail. I found or established accessories as shown below.

The coordinates shown were derived from a direct RTN GPS observation referenced to the WISCRS network.

(c) (d) (e) Plan view of corner with ties to at least 4 witness monuments. If in disagreement with previously established corner, show the distances between the two corners and also indicate the ties to the disputed.



REGISTER OF DEEDS OFFICE
 ONEIDA COUNTY
 FILED

JAN 03 2014

AT _____ O'CLOCK _____ M
 KYLE J. FRANSON
 REGISTER OF DEEDS

(i) I, Jeffrey W. Austin, Registered Land Surveyor No. S-1885, hereby certify that the corner location on this record was determined by me or under my direction and control and that this U.S. Public Land Survey Monument Record is correct and complete to the best of my knowledge and belief.

Signature

DEC. 24, 2013
 Date