

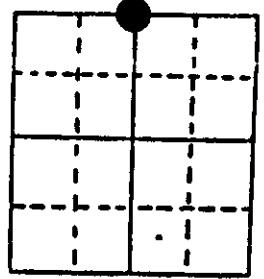
U.S. PUBLIC LAND SURVEY MONUMENT RECORD

Note: This form is intended and designed to fulfill all requirements of Wisconsin Administrative Code, Chapter A-E 7.08 U.S. Public Land Survey Monument Record (3) (a) (b) (c) (d) (e) (f) (g) (h) (i). An additional sheet may be added if necessary to conform with said requirements.

(a) Corner location: Township 36 North
 Range 6 East/West

Town/City/Village Nokomis

County Oneida



Section 4

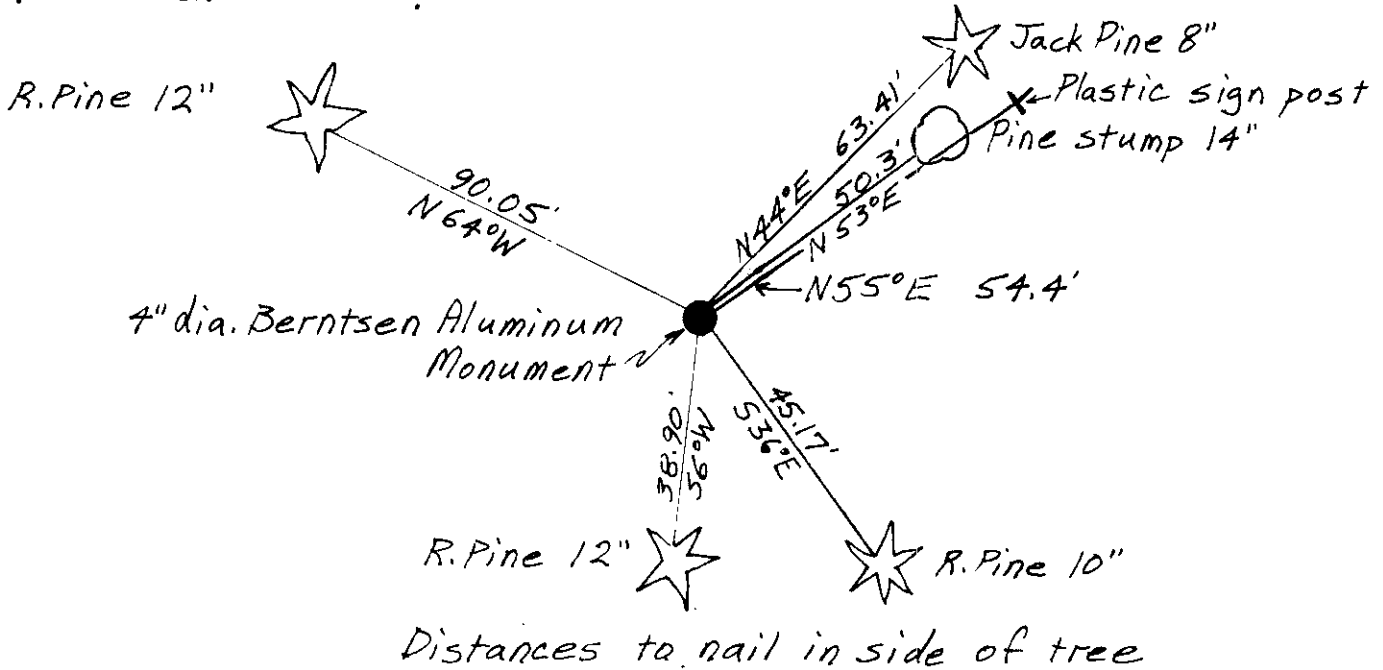
(b) (f) (g) (h) Description of monument found at this corner and if it was accepted, state all evidence (material, testimonial, occupational, plats, records, other monuments) used as a basis for accepting. If not accepted or if nothing was found, state evidence used as basis for establishing location. If reestablished through lost corner proportionate methods, indicate all monuments, distances and directions used to establish. Indicate type of monument found or set and sign post.

September, 1860, Alfred Millard set a wood post: Y.Pine 12' S87W, 4911ks., Y.Pine 10" N84W, 4611ks.

9-12-79, James Marquardt USPLS record shows corner as Oneida County Berntsen Monument: N.Pine 10" S4W, 38.6', N.Pine 8" S36E, 45.0', J.Pine 12" N50E, 50.3'.

5-16-89, I found and accepted a 4" dia. aluminum Berntsen Monument 4" below pavement: found Pine Stump 14" N53E, 50.3', set spike in N.Pine 10" S36E, 45.17', set spike in N.Pine 12" S6W, 38.90', set spike in J.Pine 8" N44E, 63.41', set spike in N.Pine 12" N64W, 90.05', set plastic survey marker sign N55E, 54.4'.

(c) (d) (e) Plan view of corner with ties to at least 4 witness monuments. If in disagreement with previously established corner, show the distances between the two corners and also indicate the ties to the disputed corner.



JEFFREY W. AUSTIN S-1885

(i) I, _____
 (type or print name) certify that the corner location on this record was determined by me or under my direction and control and that this U.S. Public Land Survey Monument Record is correct and complete to the best of my knowledge and belief.

Signature

Date JUNE 30, 1989



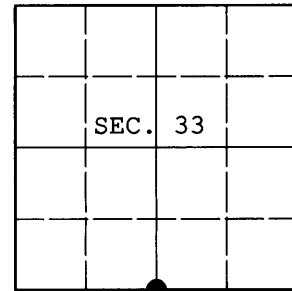
Index No. A-11

3706330020

U.S. PUBLIC LAND SURVEY MONUMENT RECORD

Note: This form is intended and designed to fulfill all requirements of Wisconsin Administrative Code, Chapter A-E 7.08 U.S. Public Land Survey Monument Record (3) (a) (b) (c) (d) (e) (f) (g) (h) (i). An additional sheet may be added if necessary to conform with said requirements.

(a) CORNER LOCATION: WISCRS (Oneida County)
 1/4 Cor. of Secs. 4 & 33 N: 167,350.831 USft
 Township 36 & 37 North E: 178,833.744 USft
 Range 6 East of the 4th P.M. Datum: NAD 1983(2011)
 Town of Nokomis and Cassian County of Oneida



(b) HISTORY OF ORIGINAL CORNER ESTABLISHMENT

Original Surveyor: Alfred Millard	Original Accessories:
Date of Survey: Commenced: Sept., 1860	y. pine 12" S87°W, 491 lks.
Completed: Sept., 1860	y. pine 10" N84°W, 461 lks.

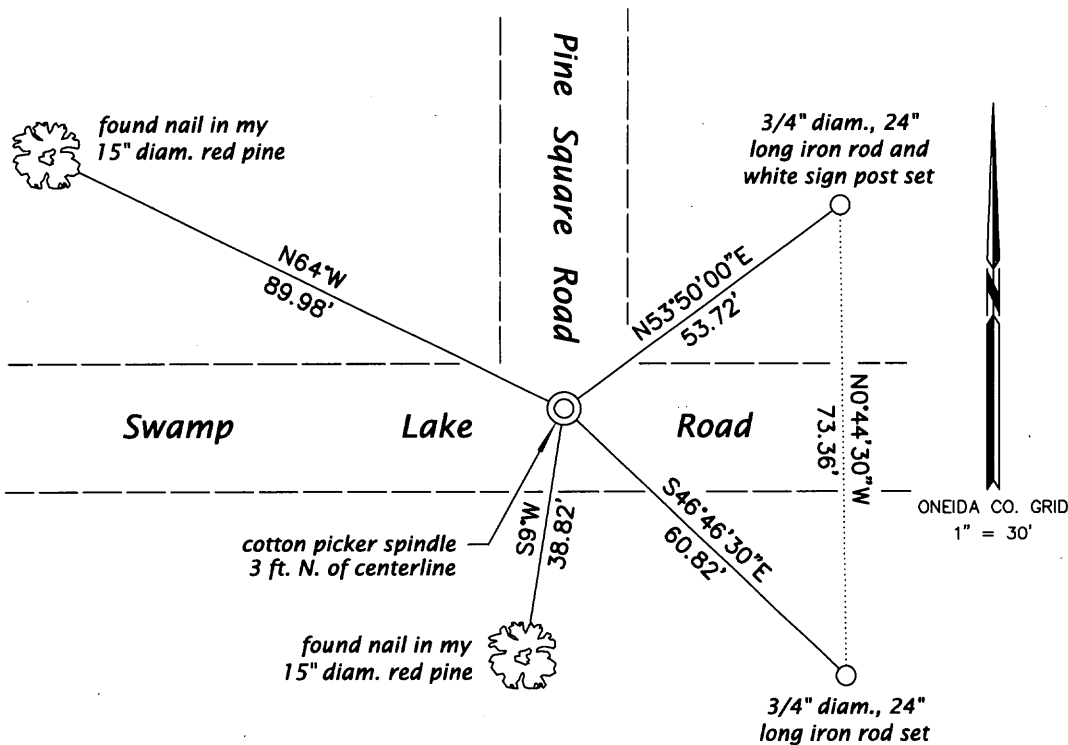
(b) (f) (g) (h) Description of monument found at this corner and if it was accepted, state all evidence (material, testimonial, occupational, plats, records, other monuments) used as a basis for accepting. If not accepted or if nothing was found, state evidence used as basis for establishing location. If re-established through lost corner proportionate methods, indicate all monuments, distances and directions used to establish. Indicate type of monument and sign post found or set.

NOTE: This is a perpetuation of a previous USPLS Monument Record by Jeffrey W. Austin, RLS dated June 30, 1989 and filed in the office of the Oneida County Register of Deeds. A complete history of the corner can be found on the previous monument record. I accept the previous location as a true and faithful perpetuation or reestablishment of the original corner location and further perpetuate it as follows.

August 25, 2013: Prior to road construction, I found and accepted my monument, a 4" diam. Berntsen breakaway monument in the pavement of Swamp Lake Road. After construction, I set a cotton picker spindle in the new pavement to replace the Berntsen. My NE and SE bearing trees are gone. I found or established accessories as shown below.

The coordinates shown were derived from a direct RTN GPS observation referenced to the WISCRS network.

(c) (d) (e) Plan view of corner with ties to at least 4 witness monuments. If in disagreement with previously established corner, show the distances between the two corners and also indicate the ties to the disputed.

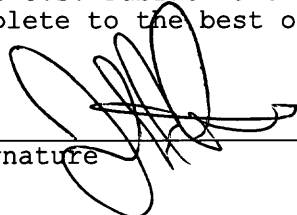


REGISTER OF DEEDS OFFICE
 ONEIDA COUNTY
 FILED

JAN 03 2014

(i) I, Jeffrey W. Austin, Registered Land Surveyor No. S-1885, hereby certify that the corner location on this record was determined by me or under my direction and control and that this U.S. Public Land Survey Monument Record is correct and complete to the best of my knowledge and belief.

AT _____ O'CLOCK _____ M
 KYLE J. FRANSON
 REGISTER OF DEEDS


 Signature

DEC. 24, 2013
 Date