

CERTIFIED LAND CORNER RESTORATION

State of Wisconsin }
County of Oneida } ss.

I John H. Fisher, do hereby certify that on the 25 day of May, 19 81, I found evidence of the southeast corner of Section 34 Township 37N, Range 6E, Fourth Principal Meridian, as described hereon; and that from this evidence I established a new monument and accessories as described hereon to perpetuate the original location of this corner:

Description of original monument and accessories and subsequent restorations:

The original Gov't. Survey was performed by Alfred Millard, Deputy Surveyor in August 1860.

Set meander post and section corner

18" Yellow Pine S80°E, 35 links
20" White Pine N20°E, 45 links

Description of corner evidence found:

None

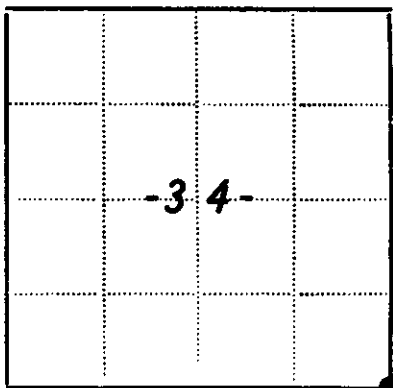
Description of monument and accessories I established to perpetuate the location of this corner:

Set by proportioning:

Railroad spike on bridge five feet north of centerline.

Witnesses:

Oneida County 2" aluminum pipe with aluminium cap. N64°E, 29.2 feet
Nail in power pole N74°E, 77.2 feet
7" Jack Pine N32°E, 44.7 feet



● - Corner monument restored
□ -

Resident witnesses _____

Dated at Minocqua Wisconsin, this 16 day of June 19 81

Signature John H. Fisher Registered Land Surveyor
(County Surveyor, Registered Land Surveyor, or other duly authorized official)

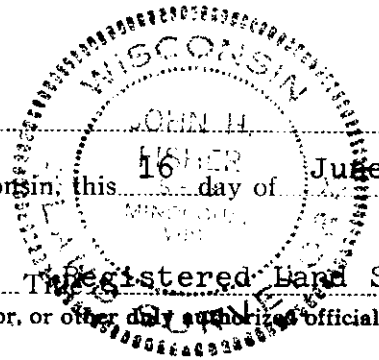
Surveyors Registration No. S-836

Office of REGISTER OF DEEDS County of Oneida

I hereby certify that the within instrument was filed in this office for record on the 17th day of September 19 82, and was filed in Book No. _____ Page No. _____ of County Records.

Signature Louis George Kuehn Title REGISTER OF DEEDS

Township _____, Range _____, Section _____, Index No. _____, Page No. _____

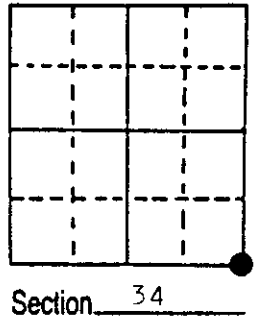


2-17

U.S. PUBLIC LAND SURVEY MONUMENT RECORD

Note: This form is intended and designed to fulfill all requirements of Wisconsin Administrative Code, Chapter A-E 5.02, U.S. Public Land Survey Monument Record (3) (a) (b) (c) (d) (e) (f) (g) (h) (i). An additional sheet may be added if necessary to conform with said requirements.

(a) Corner location: Township 37 North
 Range 6 East ~~West~~
 Town/City/Village Cassian
 County Oneida



(b) (f) (g) (h) Description of monument found at this corner and if it was accepted, state all evidence (material, testimonial, occupational, plats, records, other monuments) used as a basis for accepting. If not accepted or if nothing was found, state evidence used as basis for establishing location. If reestablished through lost corner proportionate methods, indicate all monuments, distances and directions used to establish.

The original Government Survey was performed by Alfred Millard in Sept. 1860. A wood post was set: (section corner & M.C.) Y. Pine 18 S80E, 35 lks., W. Pine 20 N20E, 45 lks.

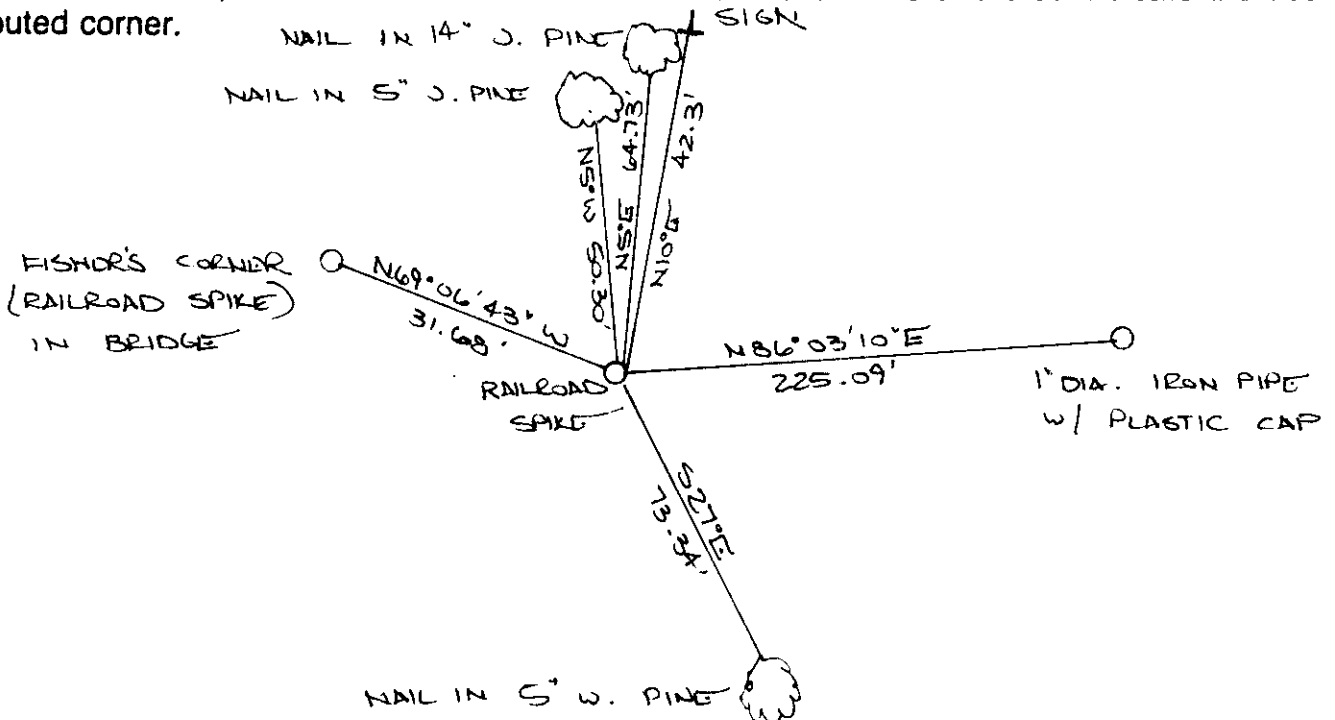
D.H. Vaughn lists this corner as Sec. Cor., R.P. Top SE cor. wing wall East bridge abut. N89W, 5.2'.

Wincentzen lists this corner as: 5'x5" post, cross in top of SE wing wall East Abutment of bridge, West, 7.75 lks. (May 25, 1949)

John H. Fisher set this corner proportionate measure: railroad spike set (Restoration Form on file).

I found and accepted: Railroad Spike East of Bridge, I established witnesses as shown below. This corner most nearly resembles Vaughn's & Wincentzen's location. (record witness is currently under bridge).

(c) (d) (e) Plan view of corner with ties to at least 4 witness monuments. If in disagreement with previously established corner, show the distances between the two corners and also indicate the ties to the disputed corner.



(i) I, Jeffrey W. Austin S-1885
 (type or print name) certify that the corner location on this record was determined by me or under my direction and control and that this U.S. Public Land Survey Monument Record is correct and complete to the best of my knowledge and belief.

Signature [Handwritten Signature] Date FEBRUARY 1, 1989



Index No. Z-17

3706340000

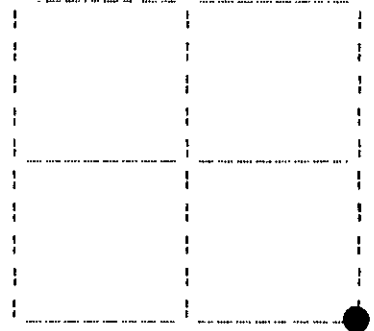
U.S. PUBLIC LAND SURVEY MONUMENT RECORD

Note: This form is intended and designed to fulfill all requirements of Wisconsin Administrative Code, Chapter A-E 7.08 U.S. Public Land Survey Monument Record(3)(a)(b)(c)(d)(e)(f)(g)(h)(i). An additional sheet may be added if necessary to conform with said requirements.

(a) Corner location: Township 37 North
 Range 6 East

Town of Cassian

Oneida County, Wisconsin

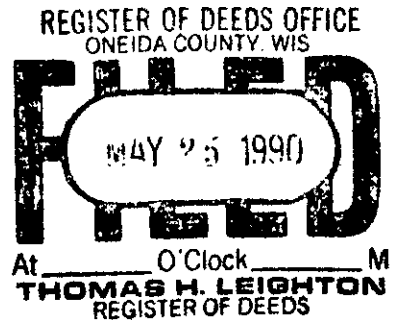


Section 34

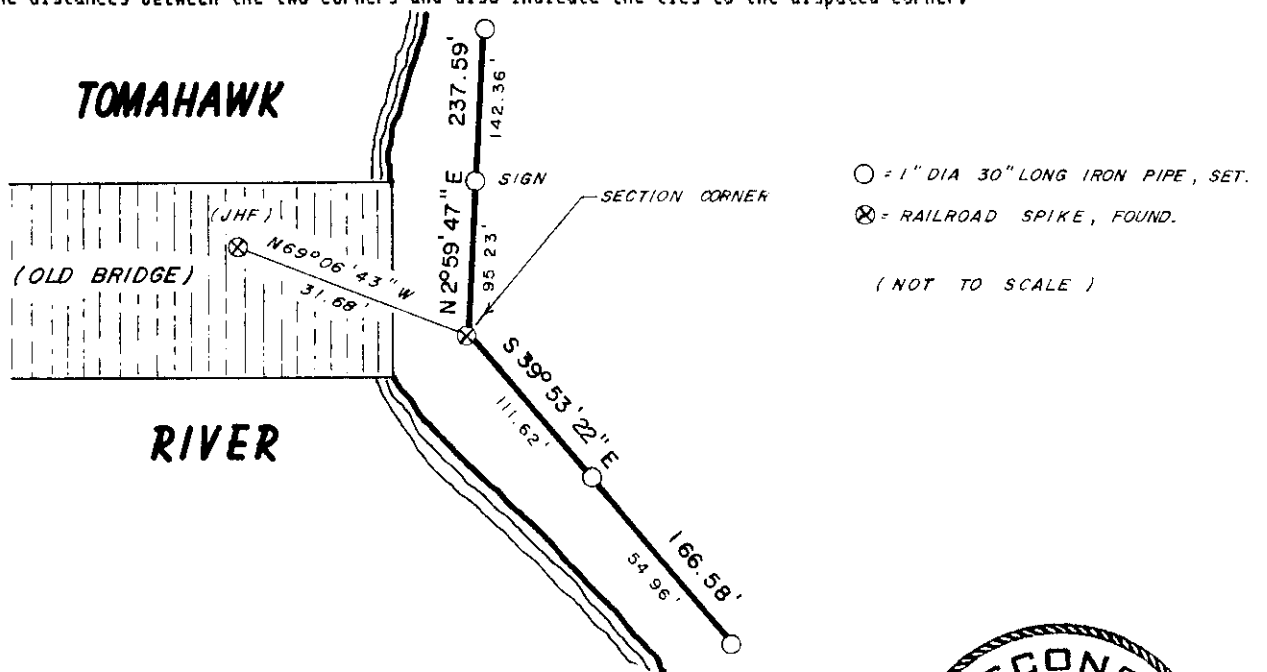
(b)(f)(g)(h) Description of monument found at this corner and if it was accepted, state all evidence (material, testimonial, occupational, plats, records, other monuments) used as a basis for accepting. If not accepted or if nothing was found, state evidence used as basis for establishing location. If reestablished through lost corner proportionate methods, indicate all monuments, distances and directions used to establish. Indicate type of monument found or set and sign post.

Note: This form is a retie of a corner location previously filed on by Jeffrey W. Austin, S-1885, dated February 1, 1989. This retie is necessary due to upcoming bridge replacement. Refer to previous monument record for complete history on this corner location.

April 29, 1990: I found and accepted a railroad spike which checks the witnesses as established in said previous monument record. I established additional witnesses as follows: set 1" dia. 30" long iron pipes with plastic self identifying caps: N2°59'47"E, 95.23 feet; N2°59'47"E, 237.59 feet; S39°53'22"E, 111.62 feet; S39°53'22"E, 166.58 feet; previous plastic survey marker sign was moved near the first pipe mentioned. The bearing base of this monument record is the same as the previous monument record.



(c)(d)(e) Plan view of corner with ties to at least four witness monuments. If in disagreement with previously established corner, show the distances between the two corners and also indicate the ties to the disputed corner.



I, Jeffrey W. Austin, Registered Land Surveyor S-1885 certify that the corner location on this record was determined by me or under my direction and control and that this U.S. Public Land Survey Monument Record is correct and complete to the best of my knowledge and belief.



Signature: *[Handwritten Signature]* Date: May 10, 1990

3706340000