

CERTIFIED LAND CORNER RESTORATION

State of Wisconsin }  
County of Oneida } ss.

I John H. Fisher, do hereby certify that on the 25 day of May, 19 81 I found evidence of the south one quarter corner of Section 34 Township 37N, Range 6E, Fourth Principal Meridian, as described hereon; and that from this evidence I established a new monument and accessories as described hereon to perpetuate the original location of this corner:

Description of original monument and accessories and subsequent restorations:

The original Gov't. Survey was performed by Alfred Millard, Deputy Surveyor in August 1860.

Set wood post  
10' Sp. Pine N86°W, 5.76 links

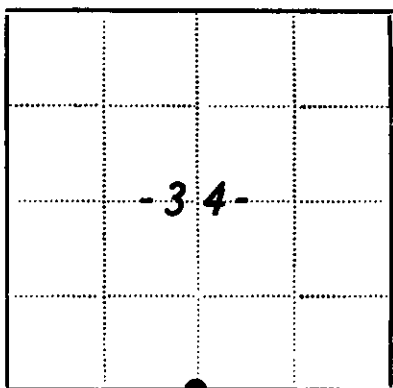
Description of corner evidence found:

None

Description of monument and accessories I established to perpetuate the location of this corner:

Set by proportioning:  
Oneida County 2" aluminium pipe with stamped aluminium cap.

Set Witness:  
8" Jack Pine S13°W, 66.2 feet  
7" Jack Pine N13°E, 31.0 feet  
18" Jack Pine N66°E, 64.2 feet



Resident witnesses.....

Dated at Minocqua Wisconsin, this 16 day of June 19 81.

Signature John H. Fisher Registered Land Surveyor  
(County Surveyor, Registered Land Surveyor, or other duly authorized official)

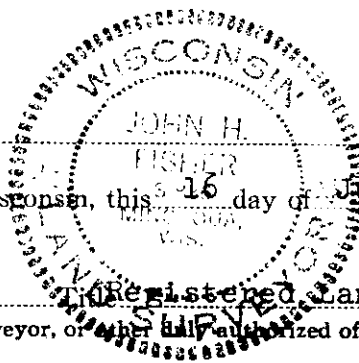
Surveyors Registration No. S-836

Office of REGISTER OF DEEDS County of Oneida

I hereby certify that the within instrument was filed in this office for record on the 17th day of September 19 82, and was filed in Book No. Page No. of County Records.

Signature Doris Verage Kuehn Title REGISTER OF DEEDS

Township, Range, Section, Index No., Page No.

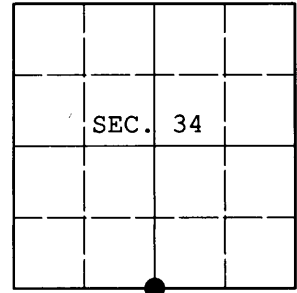


2-15

**U.S. PUBLIC LAND SURVEY MONUMENT RECORD**

Note: This form is intended and designed to fulfill all requirements of Wisconsin Administrative Code, Chapter A-E 7.08 U.S. Public Land Survey Monument Record (3) (a) (b) (c) (d) (e) (f) (g) (h) (i). An additional sheet may be added if necessary to conform with said requirements.

(a) CORNER LOCATION: WISCRS (Oneida County)  
 1/4 Cor. of Secs. 3 & 34 N: 167,344.31 USft  
 Township 36 & 37 North E: 184,071.47 USft  
 Range 6 East of the 4th P.M. Datum: NAD 1983(2011)  
 Town of Nokomis and Cassian County of Oneida



(b) HISTORY OF ORIGINAL CORNER ESTABLISHMENT

Original Surveyor: Alfred Millard Original Accessories:  
 Date of Survey: Commenced: Sept., 1860 sp. pine 10" N86°W, 576 lks.  
 Completed: Sept., 1860

(b) (f) (g) (h) Description of monument found at this corner and if it was accepted, state all evidence (material, testimonial, occupational, plats, records, other monuments) used as a basis for accepting. If not accepted or if nothing was found, state evidence used as basis for establishing location. If re-established through lost corner proportionate methods, indicate all monuments, distances and directions used to establish. Indicate type of monument and sign post found or set.

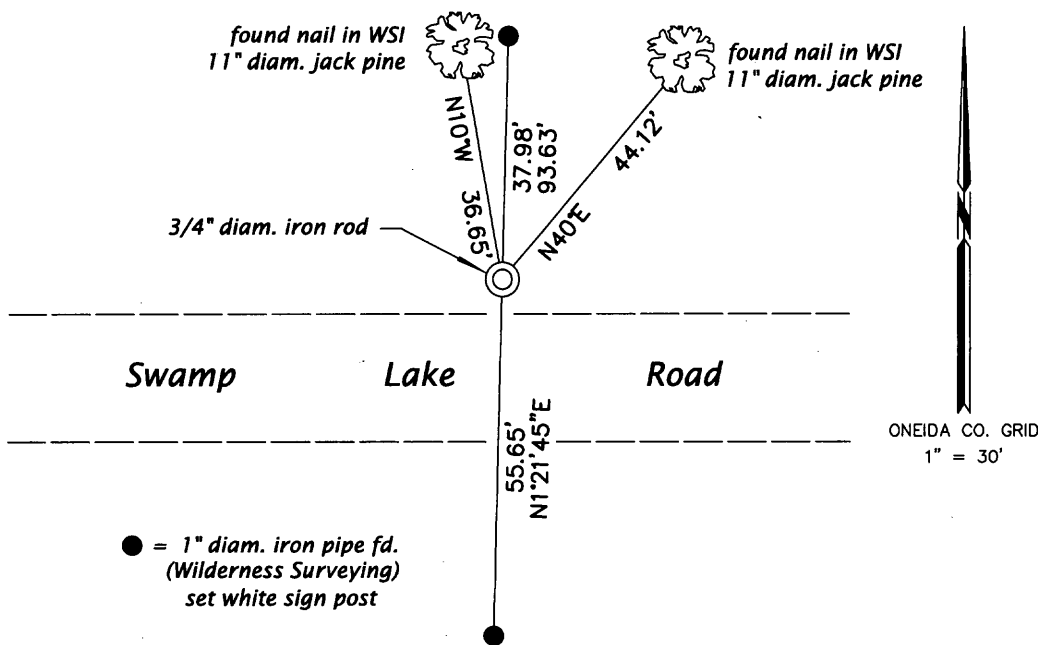
June 16, 1981: Certified Land Corner Restoration by John H. Fisher. Fisher proportioned the corner location between 3706330000 and 3706350020 as shown on OCS# B-1716.

March 29, 1996: James D. Rein proportioned the corner location between 3706330000 and 3706340000 as shown on OCS# C-1234, he set a 4" diam. aluminum monument.

August 25, 2013: Prior to road construction, I found the damaged remains of Rein's monument and two reference monuments. After construction, I set a 3/4" diam., 24" long iron rod from the WSI reference monuments as shown below. The corner is on the North edge of the North shoulder of the road.

The coordinates shown were derived from a direct RTN GPS observation referenced to the WISCORS network.

(c) (d) (e) Plan view of corner with ties to at least 4 witness monuments. If in disagreement with previously established corner, show the distances between the two corners and also indicate the ties to the disputed.



REGISTER OF DEEDS OFFICE  
 ONEIDA COUNTY  
 FILED

JAN 03 2014

(i) I, Jeffrey W. Austin, Registered Land Surveyor No. S-1885, hereby certify that the corner location on this record was determined by me or under my direction and control and that this U.S. Public Land Survey Monument Record is correct and complete to the best of my knowledge and belief.

AT \_\_\_\_\_ O'CLOCK \_\_\_\_\_ M  
 KYLE J. FRANSON  
 REGISTER OF DEEDS

Signature

DEC. 24, 2013

Date

3706340020 (INDEX NO. Z-15)