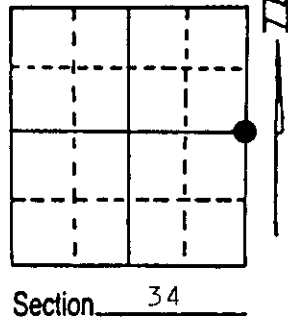


U.S. PUBLIC LAND SURVEY MONUMENT RECORD

Note: This form is intended and designed to fulfill all requirements of Wisconsin Administrative Code, Chapter A-E 5.02, U.S. Public Land Survey Monument Record (3) (a) (b) (c) (d) (e) (f) (g) (h) (i). An additional sheet may be added if necessary to conform with said requirements.

(a) Corner location: Township 37 North
 Range 6 East/West ~~XXXXX~~

Town/City/Village ~~XXXXXXXXX~~ Cassian
 County Oneida



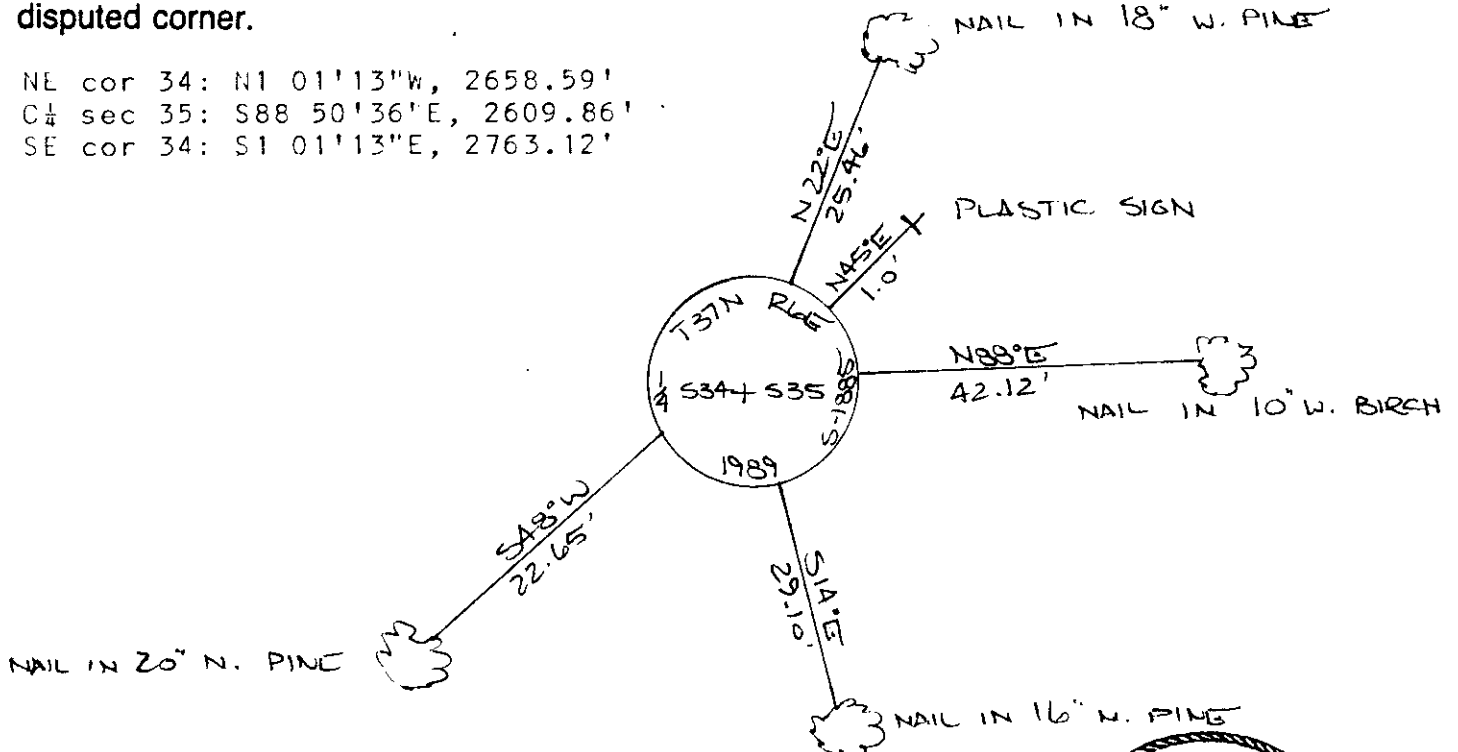
(b) (f) (g) (h) Description of monument found at this corner and if it was accepted, state all evidence (material, testimonial, occupational, plats, records, other monuments) used as a basis for accepting. If not accepted or if nothing was found, state evidence used as basis for establishing location. If reestablished through lost corner proportionate methods, indicate all monuments, distances and directions used to establish.

The original Government Survey was performed by Joseph H. Jenkins in June & July, 1863. A wood post was set: Aspen 10 N27W, 8 lks.; no other tree near.

After extensive traverse work a search was made at the proportionate location and also at the location of the intersection of the East-West one quarter line of section 35 and the section line. No marks of the original or any other surveyor were found. I therefore established the corner at the intersection of the section line and the one quarter line to agree with work surveyed using the existing center of section 35. I set: Aluminum pipe, 30' long, 2 1/2' dia., with aluminum cap stamped as shown below. I established the following witnesses: W. Birch 10' N88E, 42.12', W. Pine 16" N22E, 25.46', N. Pine 16" S14E, 29.10', N. Pine 20' S48W, 22.65', set plastic survey marker sign N45E, 1.0'.

(c) (d) (e) Plan view of corner with ties to at least 4 witness monuments. If in disagreement with previously established corner, show the distances between the two corners and also indicate the ties to the disputed corner.

NE cor 34: N1 01'13"W, 2658.59'
 C 1/4 sec 35: S88 50'36"E, 2609.86'
 SE cor 34: S1 01'13"E, 2763.12'



(i) I, JEFFREY W. AUSTIN S-1885
 (type or print name) certify that the corner location on this record was determined by me or under my direction and control and that this U.S. Public Land Survey Monument Record is correct and complete to the best of my knowledge and belief.



Jeffrey W. Austin Signature
FEBRUARY 1, 1989 Date

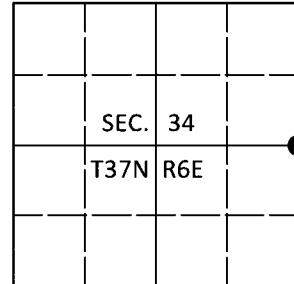
Index No. X-17

U.S. PUBLIC LAND SURVEY MONUMENT RECORD

Note: This form is intended and designed to fulfill all requirements of Wisconsin Administrative Code, Chapter A-E 7.08 U.S. Public Land Survey Monument Record (3)(a-i).

(a) CORNER LOCATION
 1/4 Cor. of Secs. 34 & 35
 Township 37 North
 Range 6 East of the 4th P.M.
 Town of Cassian
 County of Oneida

WISCRS - Oneida County
 N: 170,104.81 USft
 E: 186,693.54 USft
 Datum: NAD 83(2011)
 GNSS Method: RTN - Direct
 GNSS Control: WISCORS VRS



(b) HISTORY OF ORIGINAL CORNER ESTABLISHMENT

Original Surveyor:

Original Accessories:

Date of Survey Commenced:
 Completed:

See previous monument record(s)

(b)(f)(g)(h) Description of monument found at this corner and if it was accepted, state all evidence (material, testimonial, occupational, plats, records, other monuments) used as a basis for accepting. If not accepted or if nothing was found, state evidence used as basis for establishing location. If re-established through lost corner proportionate methods, indicate all monuments, distances and directions used to establish. Indicate type of monument and sign post found or set.

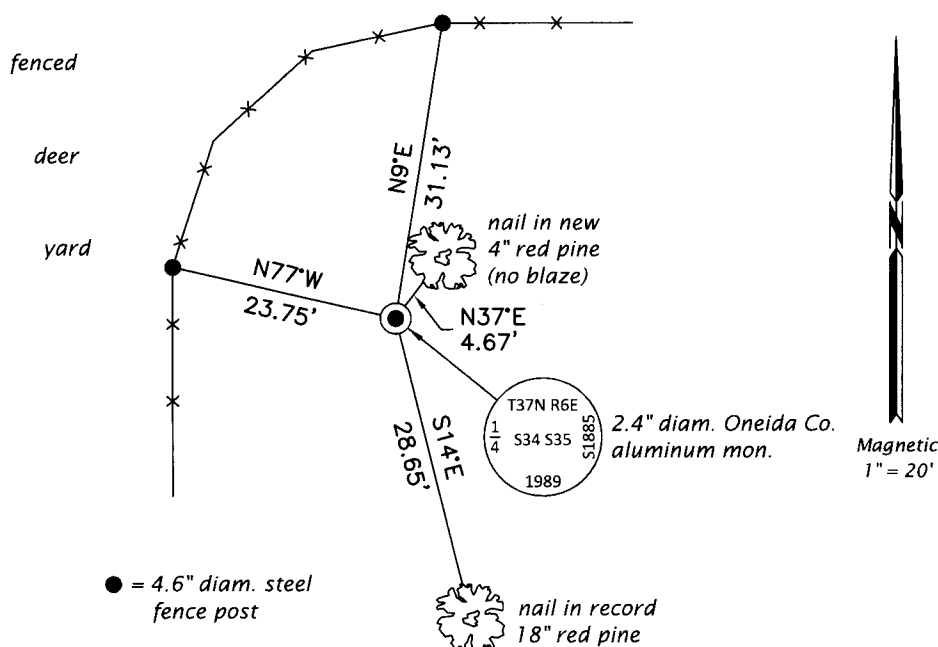
This is a perpetuation of the following monument record(s) that comprise a complete history of the corner:

Feb. 1, 1989: USPLS Monument Record No. 3706342000 by Jeffrey W. Austin, PLS

Aug. 7, 2019: I found and accepted the record monument, a 2.4" diam. aluminum pipe with a 3.3" diam. Oneida Co. aluminum cap projecting 6" above the ground surface. The record bearing trees at N22°E and S48°W are gone. The record birch bearing tree is a stump. I found or established accessories as shown below. I found a white vinyl sign post bearing North, 0.4 ft.

The coordinate value shown has been verified by at least one of the following methods: 1) comparison to a previously GPS determined published value; 2) the value is the average of two or more GPS observations at a markedly different time; 3) one or more distances were measured back to the GPS observed corner from temporary GPS observed offset locations.

(c)(d)(e) Plan view of corner with ties to at least 4 witness monuments. If in disagreement with previously established corner, show the distances between the two corners and also indicate the ties to the disputed.



REGISTER OF DEEDS OFFICE
 ONEIDA COUNTY
 FILED

JAN 03 2020

KYLE J. FRANSON
 REGISTER OF DEEDS

(i) I, Jeffrey W. Austin, Professional Land Surveyor No. S-1885, hereby certify that the corner location on this record was determined by me or under my direction and control and that this U.S. Public Land Survey Monument Record is correct and complete to the best of my knowledge and belief.

[Handwritten Signature]
 Signature

DEC 23, 2019
 Date

3706342000 (INDEX NO. X-17)