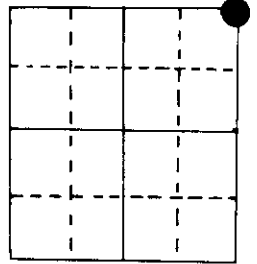


U.S. PUBLIC LAND SURVEY MONUMENT RECORD

Note: This form is intended and designed to fulfill all requirements of Wisconsin Administrative Code, Chapter A-E 5.02, U.S. Public Land Survey Monument Record (3) (a) (b) (c) (d) (e) (f) (g) (h) (i). An additional sheet may be added if necessary to conform with said requirements.

(a) Corner location: Township 36 North
 Range 6 East/~~West~~

Town/City/Village Cassian
 County Oneida



Section 2

(b) (f) (g) (h) Description of monument found at this corner and if it was accepted, state all evidence (material, testimonial, occupational, plats, records, other monuments) used as a basis for accepting. If not accepted or if nothing was found, state evidence used as basis for establishing location. If reestablished through lost corner proportionate methods, indicate all monuments, distances and directions used to establish.

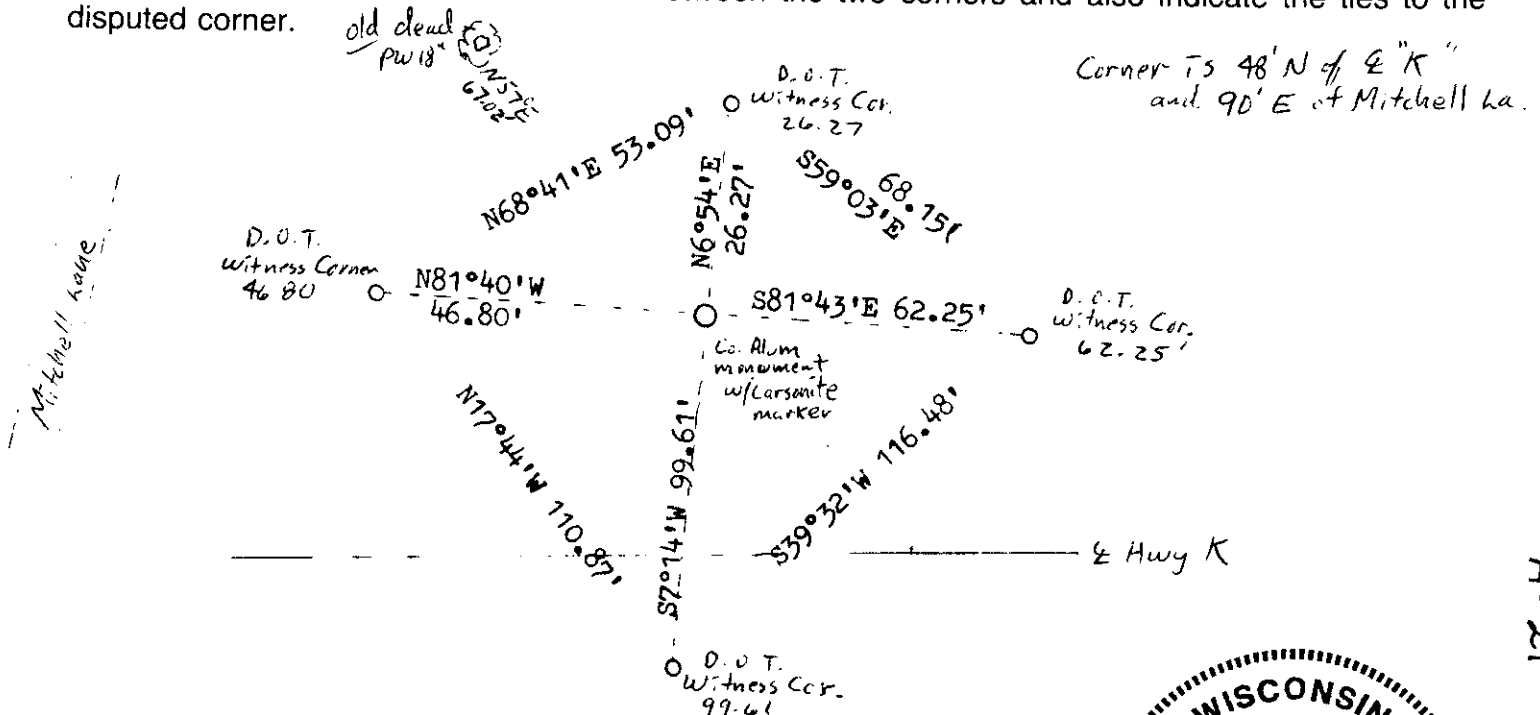
Original survey in 1860, BTs SPr 10" S3°E 8 lks., Spr 10" S55°W 45 lks.,
 Spr 9" N60°W 61 lks.

A 2" iron pipe (4 x 4 wood post alongside) was used and accepted in the 1970's.

In 1984 the D.O.T. set concrete witness monuments (with brass caps) flush with ground.

IN 1988 M. Seymour found the 2" i.p. that had been used in other surveys and accepted it as being correct. The i.p. was replaced by a Oneida County Aluminum pipe with cap. The D.O.T. witnesses are OK.

(c) (d) (e) Plan view of corner with ties to at least 4 witness monuments. If in disagreement with previously established corner, show the distances between the two corners and also indicate the ties to the disputed corner.



(i) I, William C. Rohde
 (type or print name) certify that the corner location on this record was determined by me or under my direction and control and that this U.S. Public Land Survey Monument Record is correct and complete to the best of my knowledge and belief.

William C. Rohde 10-6-88
 Signature Date



3706350000

A-21