

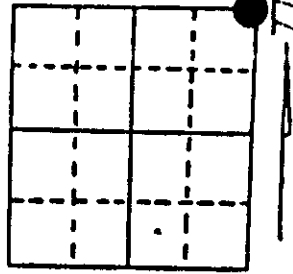
U.S. PUBLIC LAND SURVEY MONUMENT RECORD

Note: This form is intended and designed to fulfill all requirements of Wisconsin Administrative Code, Chapter A-E 7.08 U.S. Public Land Survey Monument Record (3) (a) (b) (c) (d) (e) (f) (g) (h) (i). An additional sheet may be added if necessary to conform with said requirements.

(a) Corner location: Township 36 North
 Range 6 East/West

Town/City/Village Nokomis

County Oneida



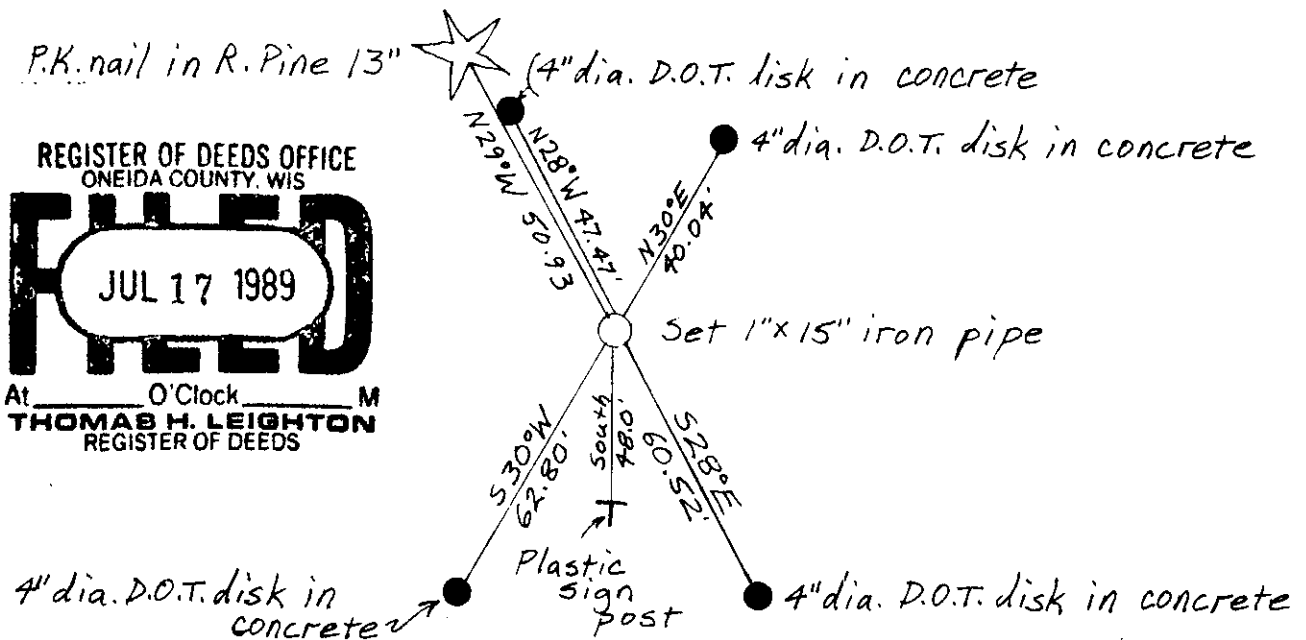
Section 1

(b) (f) (g) (h) Description of monument found at this corner and if it was accepted, state all evidence (material, testimonial, occupational, plats, records, other monuments) used as a basis for accepting. If not accepted or if nothing was found, state evidence used as basis for establishing location. If reestablished through lost corner proportionate methods, indicate all monuments, distances and directions used to establish. Indicate type of monument found or set and sign post.

September, 1860, Alfred Millard set a wood post: W.Pine 30" N42W, 141ks., W.Pine 18" S41W, 621ks., Maple 12" N58E, 681ks., Y.Birch 10" S76E, 451ks.

5-17-89, I found and accepted four DOT brass disks 4" in concrete as witnesses for the corner location: N28W, 47.47'; S30W, 62.80'; S28E, 60.52'; N30E, 40.04'. I also found a PK nail in N.Pine 13" N29W, 50.93'. I set a plastic survey marker sign South, 48.0'. I set a 1" dia. 15" long iron pipe at the intersection of the ties to monument the corner.

(c) (d) (e) Plan view of corner with ties to at least 4 witness monuments. If in disagreement with previously established corner, show the distances between the two corners and also indicate the ties to the disputed corner.



REGISTER OF DEEDS OFFICE
 ONEIDA COUNTY, WIS
FILED
 JUL 17 1989
 At _____ O'Clock _____ M
THOMAS H. LEIGHTON
 REGISTER OF DEEDS

JEFFREY W. AUSTIN S-1885

(i) I, _____
 (type or print name) certify that the corner location on this record was determined by me or under my direction and control and that this U.S. Public Land Survey Monument Record is correct and complete to the best of my knowledge and belief.

Signature _____ Date JUNE 30, 1989



Index No. A-25

U.S. PUBLIC LAND SURVEY MONUMENT RECORD

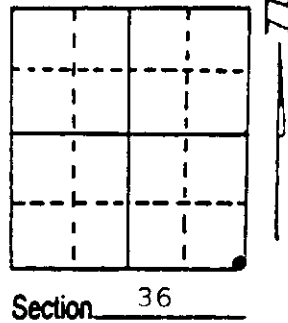
Note: This form is intended and designed to fulfill all requirements of Wisconsin Administrative Code, Chapter A-E 7.08 U.S. Public Land Survey Monument Record (3) (a) (b) (c) (d) (e) (f) (g) (h) (i). An additional sheet may be added if necessary to conform with said requirements.

(a) Corner location: Township 37 North

Range 6 East

Town/City/Village Cassian

County Oneida

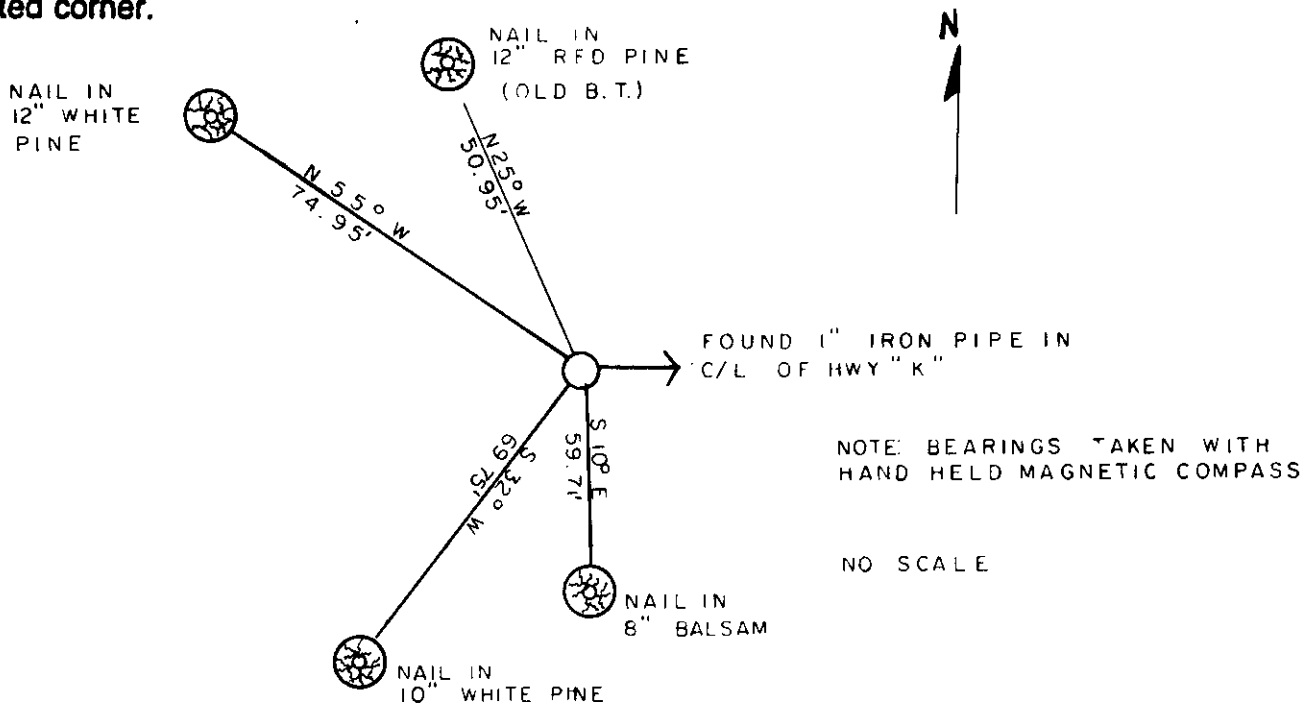


(b) (f) (g) (h) Description of monument found at this corner and if it was accepted, state all evidence (material, testimonial, occupational, plats, records, other monuments) used as a basis for accepting. If not accepted or if nothing was found, state evidence used as basis for establishing location. If reestablished through lost corner proportionate methods, indicate all monuments, distances and directions used to establish. Indicate type of monument found or set and sign post.

1860-A. Millard set post 30" White Pine North 42 degrees West 14 links
 12" Maple North 58 degrees East 69 links 18" White Pine South 41
 degrees West 62 links 10" Yellow Birch South 76 degrees East 45 links
 1956-0 & I R.R. found spike in HWY "K" set witness corner 25.5' South
 Witness Corner BTs are: 4" White Pine South 60 degrees West 42.0'
 6" White Pine South 62 degrees West 20.0' 8" White Birch South
 52 degrees East 14.0'
 1989-Todd Loftus found iron pipe in road
 1983-Ed Mcnown (D.O.T.) set brass caps in concrete posts flush for
 witness corner found R.R. spike in pavement bearings and distances
 for Witness Corners are: N27-43-10" W 47.47', N31-10-50" E 40.04'
 S 27-43-10" W 60.52' S 31-10-50" W 62.80' and N 0-51-10" E 33.0'
 to an iron pipe

1992-William E. Bandow found I.P. spike and witnessed as shown below:

(c) (d) (e) Plan view of corner with ties to at least 4 witness monuments. If in disagreement with previously established corner, show the distances between the two corners and also indicate the ties to the disputed corner.



(i) I, William E. Bandow
 (type or print name) certify that the corner location on this record was determined by me or under my direction and control and that this U.S. Public Land Survey Monument Record is correct and complete to the best of my knowledge and belief.

William E. Bandow 3-11-93
 Signature Date



Stamp 3706360000

Index No. 2-25