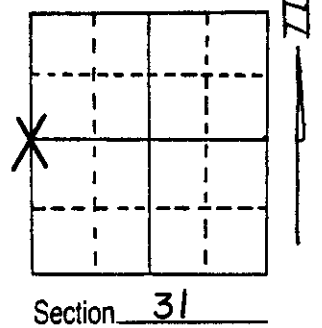


# U.S. PUBLIC LAND SURVEY MONUMENT RECORD

Note: This form is intended and designed to fulfill all requirements of Wisconsin Administrative Code, Chapter A-E 5.02, U.S. Public Land Survey Monument Record (3) (a) (b) (c) (d) (e) (f) (g) (h) (i). An additional sheet may be added if necessary to conform with said requirements.

(a) Corner location: Township 37 North  
Range 7 East/West  
Town/~~City/Village~~ CASSIAN  
County ONEIDA



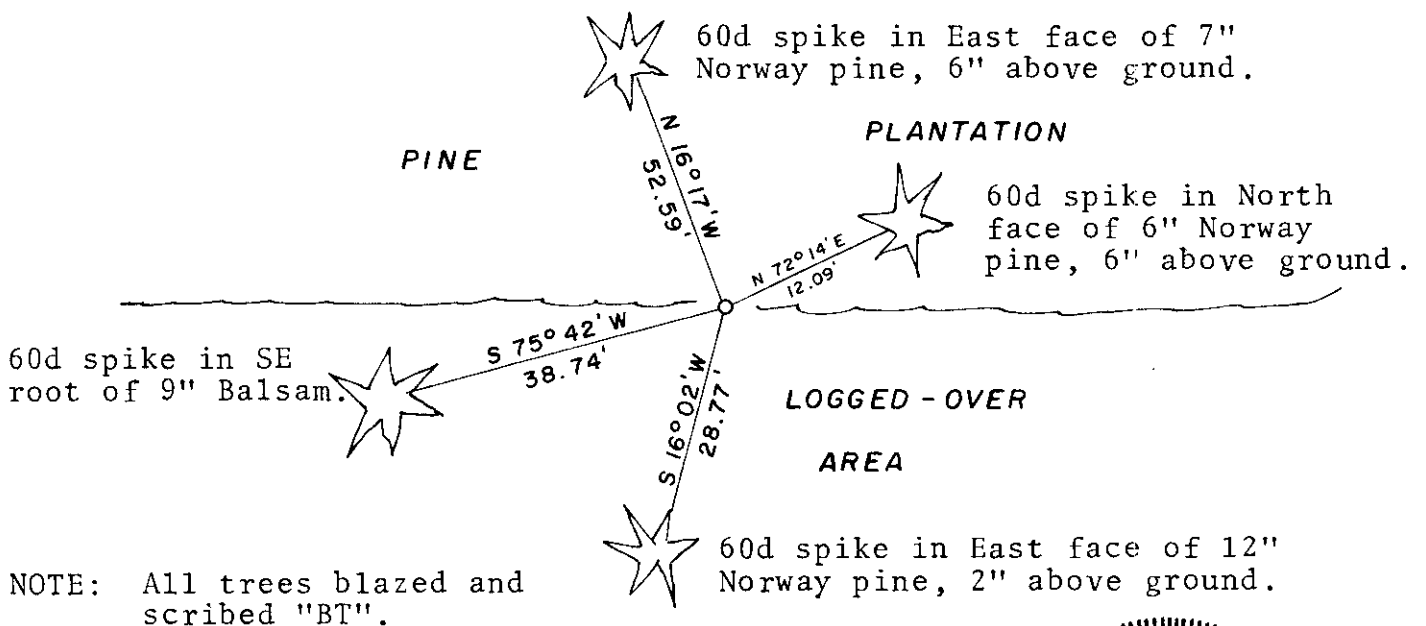
Section 31

(b) (f) (g) (h) Description of monument found at this corner and if it was accepted, state all evidence (material, testimonial, occupational, plats, records, other monuments) used as a basis for accepting. If not accepted or if nothing was found, state evidence used as basis for establishing location. If reestablished through lost corner proportionate methods, indicate all monuments, distances and directions used to establish.

October 22, 1985. On this date, an extensive search of the immediate corner area yielded no sign of the corner. No fences or lines of occupation are visible save for a Norway pine plantation which lies North of corner. Established corner location by single proportionate measurement between existing Northwest and Southwest corners of Section 31-37-7. Set a 2"x30" iron pipe at corner.

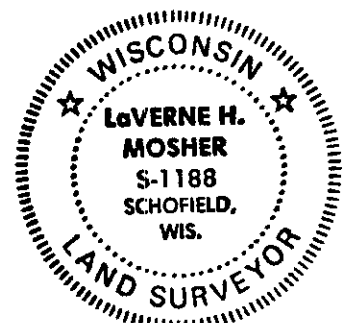
See reverse side for section bearing and distance information.

(c) (d) (e) Plan view of corner with ties to at least 4 witness monuments. If in disagreement with previously established corner, show the distances between the two corners and also indicate the ties to the disputed corner.



(i) I, LaVerne H. Mosher,  
(type or print name) certify that the corner location on this record was determined by me or under my direction and control and that this U.S. Public Land Survey Monument Record is correct and complete to the best of my knowledge and belief.

LaVerne H. Mosher October 30, 1985  
Signature Date

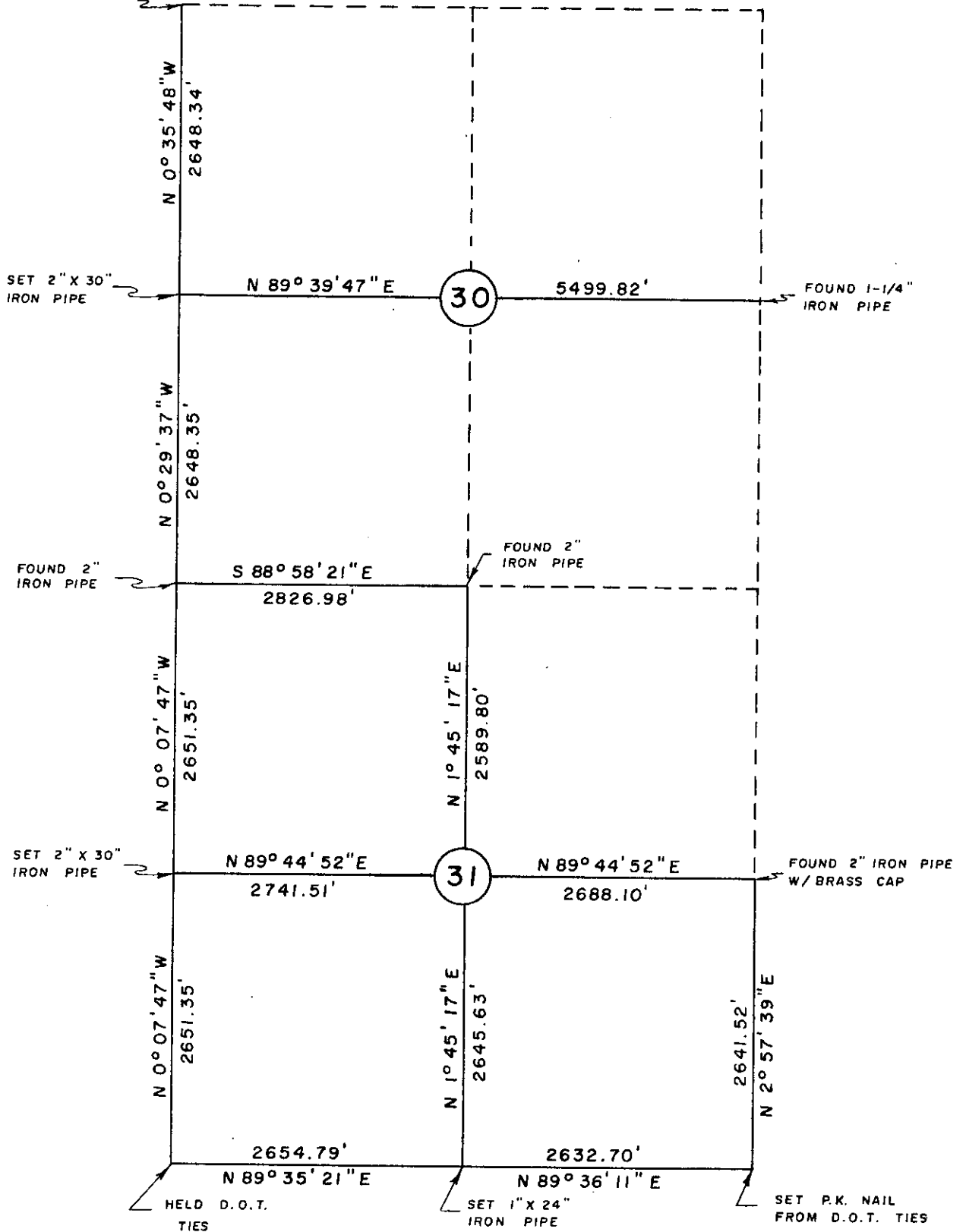


Index No. X-1

3706362000

T 37 N , R 7 E

FOUND WELL POINT  
AND SCRIBED POST



REGISTER OF DEEDS OFFICE  
ONEIDA COUNTY, WIS.

**FILED**  
JUN 11 1986

At...104...O'Clock...P...M  
DORIS VERABE KUEHN  
REGISTER OF DEEDS