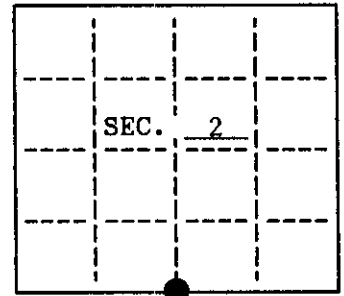


**U. S. PUBLIC LAND SURVEY MONUMENT RECORD**

Note: This form is intended and designed to fulfill all requirements of Wisconsin Administrative Code, Chapter A-E 7.08 U.S. Public Land Survey Monument Record (3)(a)(b)(c)(d)(e)(f)(g)(h)(i). An additional sheet may be added if necessary to conform with said requirements.

(a) CORNER LOCATION: State Plane Coordinates  
 South 1/4 corner of Sec. 2 X \_\_\_\_\_  
 Township 37 North Y \_\_\_\_\_  
 Range 7 East Datum Base \_\_\_\_\_  
 Town/City Lake Tomahawk County of Oneida



(b) HISTORY OF ORIGINAL CORNER ESTABLISHMENT  
 Original Surveyor: Joseph Jenkins  
 Date of Survey: Commenced November, 1862  
 Completed November, 1862

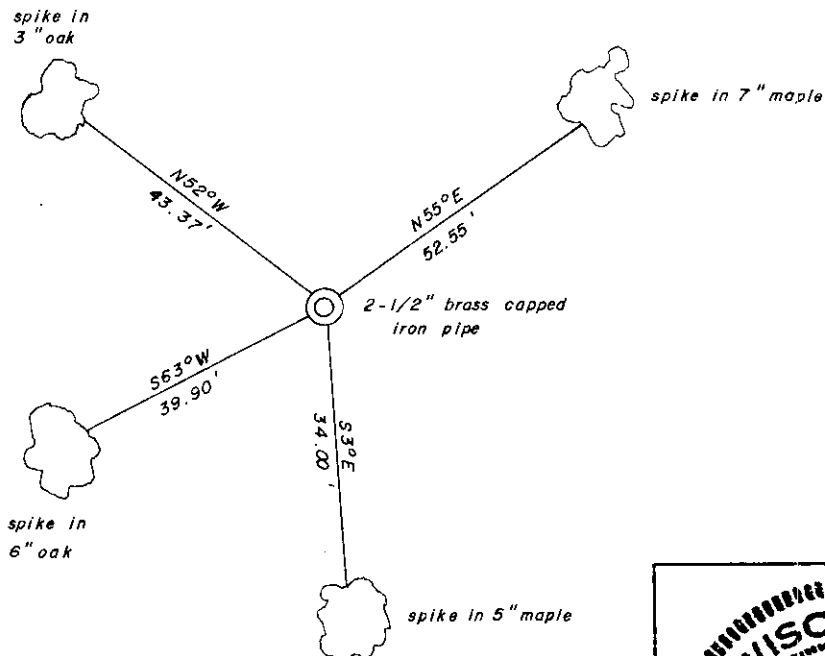
Original B.T.'S  
 W. Pine 8" N18°W, 26 Lks.  
 Y. Pine 16" S50°W, 30 Lks.

(b)(f)(g)(h) Description of monument found at this corner and if it was accepted, state all evidence (material, testimonial, occupational, plats, records, other monuments) used as a basis for accepting. If not accepted or if nothing was found, state evidence used as basis for establishing location. If reestablished through lost corner proportionate methods, indicate all monuments, distances and directions used to establish. Indicate type of monument and sign post found or set.

October, 1936: V. M. Maine set official iron pipe, brass cap stamped identified by old scribed stake and stumps of original B.T.'s: W. Pine 8" N18°W, 26 Lks; Y. Pine 16" S50°W, 30 Lks (marks plain). Marked new B.T.'s: Y. Pine stump 20" S20°E, 32 Lks; Y. Pine stump 14" S59°W, 72 Lks.

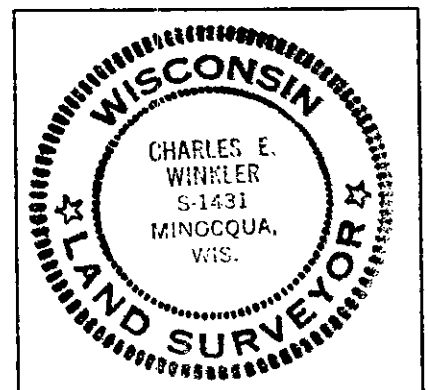
June, 1993: I found and accepted a 2-1/2" brass capped iron pipe witnessed by Maine's pine stumps: S19°E, 22.0'; and S62°W, 47.1'. I set a plastic signpost and witnessed the corner as shown below.

(c)(d)(e) Plan view of corner with ties to at least 4 witness monuments. If in disagreement with previously established corner, show the distances between the two corners and also indicate the ties to the disputed.



(i) I, Charles E. Winkler, Reg. Land Surveyor S-1431 hereby certify that the corner location on this record was determined by me or under my direction and control and that this U.S. Public Land Survey Monument Record is correct and complete to the best of my knowledge and belief.

Charles E. Winkler 9/17/1993  
 Signature Inman-Foltz & Associates Date



INDEX NO. E-19

3707020020