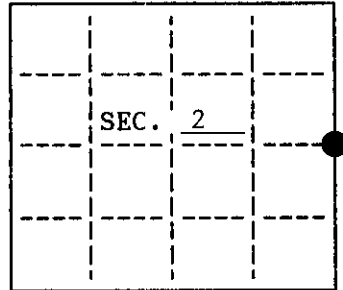


U. S. PUBLIC LAND SURVEY MONUMENT RECORD

Note: This form is intended and designed to fulfill all requirements of Wisconsin Administrative Code, Chapter A-E 7.08 U.S. Public Land Survey Monument Record (3)(a)(b)(c)(d)(e)(f)(g)(h)(i). An additional sheet may be added if necessary to conform with said requirements.

(a) CORNER LOCATION: State Plane Coordinates
 East 1/4 corner of Sec. 2 X _____
 Township 37 North Y _____
 Range 7 East Datum Base _____
 Town/City Lake Tomahawk County of Oneida



(b) HISTORY OF ORIGINAL CORNER ESTABLISHMENT
 Original Surveyor: Joseph Jenkins Original B.T.'S

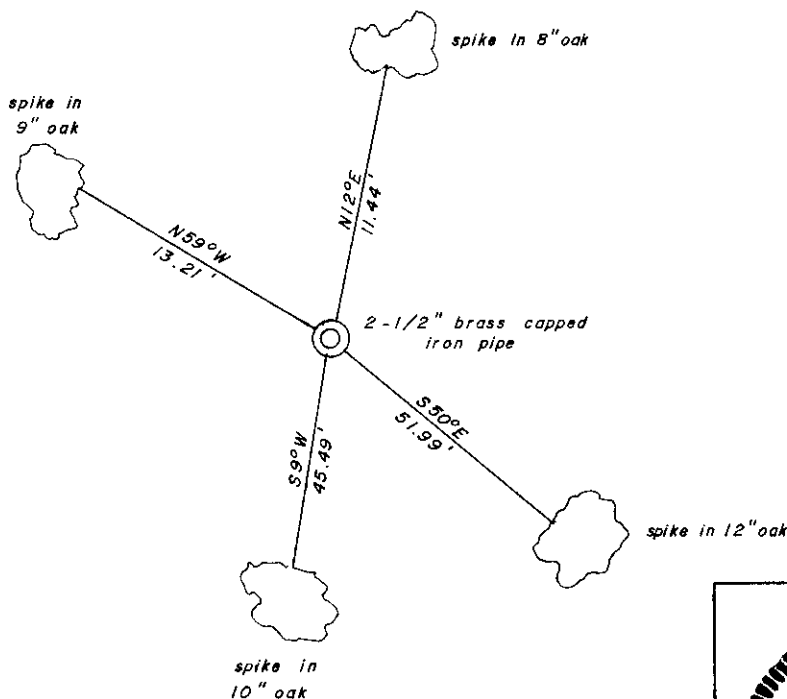
Date of Survey: Commenced November 1862 Aspen 10 N75°W, 20 lks.
 Completed November 1862 Aspen 7 N74°E, 15 lks.

(b)(f)(g)(h) Description of monument found at this corner and if it was accepted, state all evidence (material, testimonial, occupational, plats, records, other monuments) used as a basis for accepting. If not accepted or if nothing was found, state evidence used as basis for establishing location. If reestablished through lost corner proportionate methods, indicate all monuments, distances and directions used to establish. Indicate type of monument and sign post found or set.

September, 1936: V.M. Maine set official iron pipe, brass cap stamped. Marked BT's: Twin Blk. Oak 5 N57°E, .60½; W.P. Stp. 4 S37°E, .02½

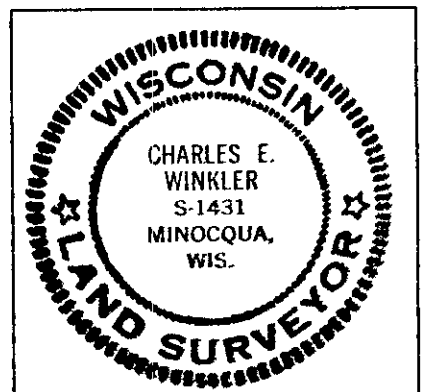
June, 1993: I found and accepted a 2½" brass capped iron pipe witnessed by Maine's Twin Oak 10" N67°E, 40.0'. I set a plastic sign post and witnessed the corner as shown below.

(c)(d)(e) Plan view of corner with ties to at least 4 witness monuments. If in disagreement with previously established corner, show the distances between the two corners and also indicate the ties to the disputed.



(i) I, Charles E. Winkler, Registered Land Surveyor hereby certify that the corner location on this record was determined by me or under my direction and control and that this U.S. Public Land Survey Monument Record is correct and complete to the best of my knowledge and belief.

Charles E. Winkler 9/17/1993
 Signature Inman-Foltz & Associates Date



INDEX NO. C-21

3707022000