

This form is intended to fulfill the requirements of Chapter A-E7.08 (3)(a) thru (i) U.S. Public Land Survey Monument Location Record, Wisconsin Administrative Code. Use the reverse side of form for continuation.

U.S. PUBLIC LAND SURVEY MONUMENT LOCATION RECORD

Recorders Data

USPLS CORNER: NORTH 1/4 CORNER SECTION: 10 TOWNSHIP: 37 NORTH RANGE: 7 EAST
NAME OF WATERWAY FOR M.C. CORNER: N/A SECTION LINE: N/A
~~(CITY)(VILLAGE)(TOWN)~~ OF: CASSIAN COUNTY OF: ONEIDA

Description of monument found or placed and all other evidence used as the basis for monument location; including monuments and measurements required if the corner location was reestablished by lost corner proportionate methods. Also indicate name of the original surveyor, original survey date and the corner monument, bearing trees, witness or other reference monuments established, including measured bearing and distance ties, from available survey records.

Found and accepted an older plumb and stable 2" dia. galvanized iron pipe monument with stamped brass cap 30" up at this corner and a standard white poly 'T' marker post 15" NNE; I left iron pipe in place and measured new ties to cap center. Blaze orange flagged trees lead West of corner about 100' to a N/S woods road along crest of steep bank down to Long Lake.

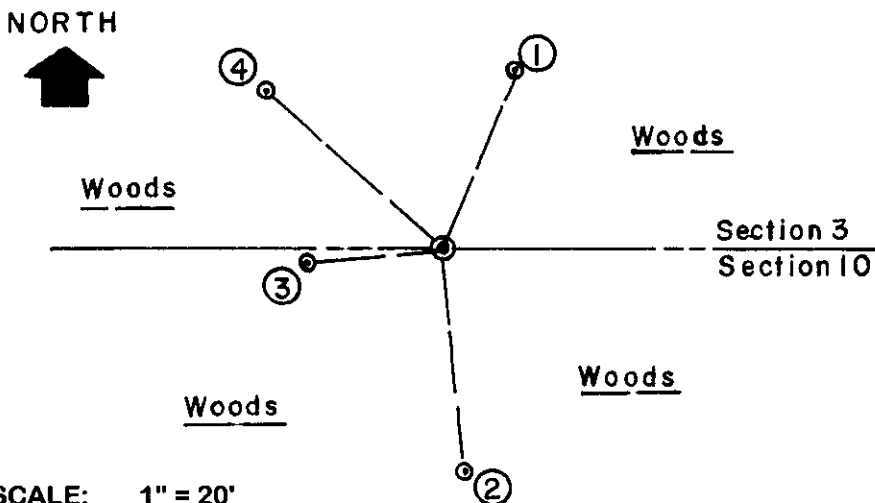
In November 1862, Joseph H. Jenkins/GLO set a wood post as the original corner and noted OBTs: 7" Pw N60°E 20 links and a 6" Pw S48°W 10 links; all are now obliterated.

According to Page 115 of Maines Book 1 in Oneida County survey records, V.M. Maine found B.F. Dorrs 1/4 corner stake which he replaced with an "official iron pipe", normally a 2" dia. galvanized iron pipe with stamped brass cap, and verified from Dorrs BTs: an 8" Pw S2.5°E .105 chains and a 6" Pw N67.5°E 0.11 chains, both now obliterated beyond recovery; and Maine noted new BTs: a 3" Black Oak S08°W 0.44 chains, not found or verified; a 3" Black Oak S80°W 0.215 chains found OK and used for new ties below; and a 3" Black Oak N14°W 0.3975 chains, not found or verified.

I flagged corner monument, 'T' post and all old BTs with blaze orange tape.

This recovery completed May 14, 2003; there were no direct witnesses.

Plan view map of monument location with bearing and distance ties to a minimum of four(4) described witness or reference monuments of concrete, natural stone, iron, live bearing trees or equivalent material. If applicable, also show a minimum of two(2) bearing and distance ties to any other monument found and not accepted; including the bearing and distance from the accepted monument.



WITNESS MONUMENT TIES:

- ① Old 10" Black Oak BT with upper blaze shut & lower blaze open N22°E 20.06'.
- ② Old 9" Black Oak BT with upper & lower blazes shut but plain S06°E 23.31'.
- ③ Old 9" Black Oak BT with lower blaze shut S85°W 14.20'.
- ④ Old 10" Black Oak BT with lower blaze shut N48°W 24.35'.

A 40d aluminum nail was found in the lower right face of the old BTs; my ties to usual PK/W in lower right face.

SCALE: 1" = 20'

Unless otherwise indicated, all bearing tree ties are to a .25" dia. by 2.5" long PK nail with a 1.25" dia. steel washer driven into unblazed right face and a .25" dia. by 2.5" long PK nail with a 2" dia. steel washer stamped BT is also driven into unblazed face of bearing tree at DBH; the basis for measured bearings is by compass to nearest degree and all tie distances are measured horizontal by steel tape corrected to nearest 1/100th feet at standard temperature of 68° F.

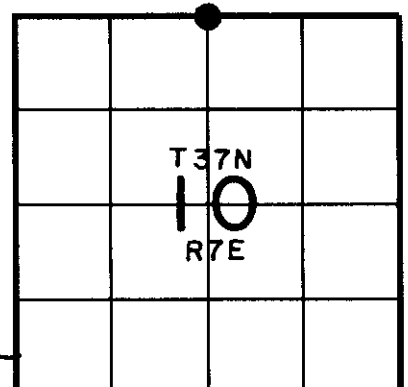
RLS SEAL:



LAND SURVEYOR CERTIFICATE:

I, William C. Rohde, hereby certify that I am duly licensed as a Professional Land Surveyor in the State of Wisconsin; that this USPLS monument location was determined by me and/or under my direct supervision and control; and that this U.S. Public Land Survey Monument Location Record is true and correct to the best of my knowledge and belief.

Signed: *William C. Rohde*
William C. Rohde RLS 841



SECTION LOCATION MAP
INDEX NO. E15

Date Signed: August 1, 2003

3707030020