

U.S. PUBLIC LAND SURVEY MONUMENT RECORD

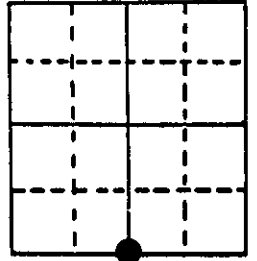
Note: This form is intended and designed to fulfill all requirements of Wisconsin Administrative Code, Chapter A-E 5.02, U.S. Public Land Survey Monument Record (3) (a) (b) (c) (d) (e) (f) (g) (h) (i). An additional sheet may be added if necessary to conform with said requirements.

(a) Corner location: Township 37 North

Range 7 East

Town Cassian

County Oneida



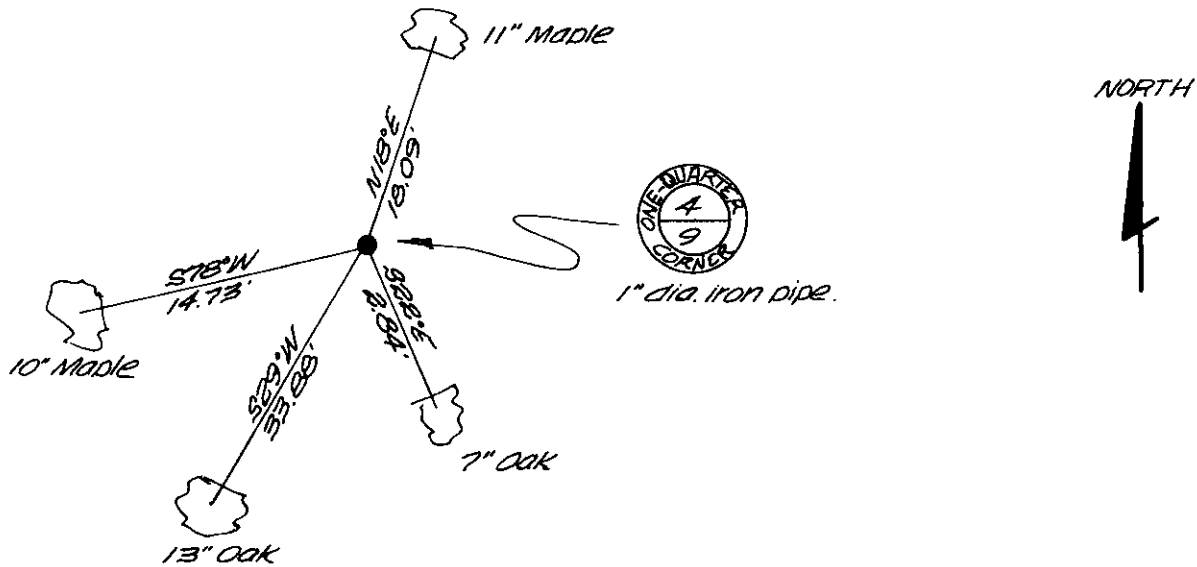
Section 4

(b) (f) (g) (h) Description of monument found at this corner and if it was accepted, state all evidence (material, testimonial, occupational, plats, records, other monuments) used as a basis for accepting. If not accepted or if nothing was found, state evidence used as basis for establishing location. If reestablished through lost corner proportionate methods, indicate all monuments, distances and directions used to establish.

November 1862 - Joseph Jenkins, Deputy Surveyor - Set one-quarter post.
Original bearing trees: W. Pine 7" S82°W, 150 links
W. Pine 8" N65°E, 200 links

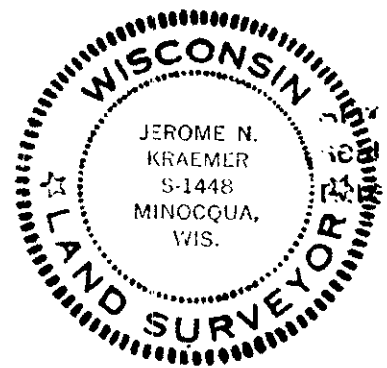
February 1986 - Jerome N. Kraemer finds 1" dia. iron pipe up 11" with 2" dia. and 4' long iron pipe driven over top of 1" iron pipe. Found 10" Maple S78°W, 14.73 feet scribed 1/4. Made new bearing trees as shown below. Distances measured to nail set in base of bearing tree.

(c) (d) (e) Plan view of corner with ties to at least 4 witness monuments. If in disagreement with previously established corner, show the distances between the two corners and also indicate the ties to the disputed corner.



(i) I, Jerome N. Kraemer, Registered Land Surveyor
(type or print name) certify that the corner location on this record was determined by me or under my direction and control and that this U.S. Public Land Survey Monument Record is correct and complete to the best of my knowledge and belief.

Jerome N. Kraemer February 25th, 1986
Signature Date



Index No. E-11

3707040020