

# U.S. PUBLIC LAND SURVEY MONUMENT RECORD

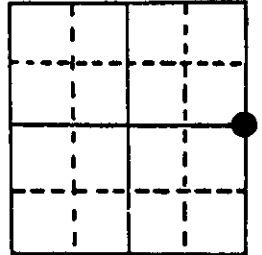
Note: This form is intended and designed to fulfill all requirements of Wisconsin Administrative Code, Chapter A-E 5.02, U.S. Public Land Survey Monument Record (3) (a) (b) (c) (d) (e) (f) (g) (h) (i). An additional sheet may be added if necessary to conform with said requirements.

(a) Corner location: Township 37 North

Range 7 East

Town Cassian

County Oneida



Section 4

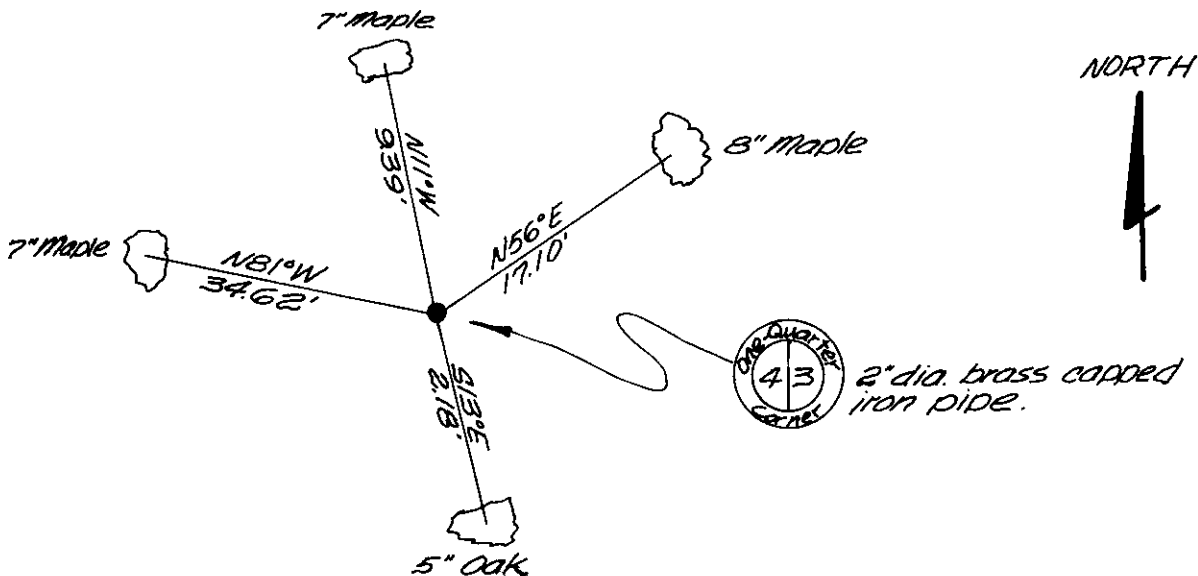
(b) (f) (g) (h) Description of monument found at this corner and if it was accepted, state all evidence (material, testimonial, occupational, plats, records, other monuments) used as a basis for accepting. If not accepted or if nothing was found, state evidence used as basis for establishing location. If reestablished through lost corner proportionate methods, indicate all monuments, distances and directions used to establish.

November 1862 - Joseph Jenkins, Deputy Surveyor - Set one-quarter post. Original bearing trees: Maple 7" S24°W, 20 links.  
 Birch 10", S28°W, 27 links

October 1936 - Maine sets brass capped iron pipe to replace original gov't.  $\frac{1}{4}$  stake identified by B.F. Dorr's B.T.

February 1986 - Jerome N. Kraemer finds 2" diameter brass capped iron pipe in place. Found 7" Maple bearing tree N81°W, 34.62 feet. Made new bearing trees as shown in plan view below.  
 Distances measured to nail set in base of bearing tree.

(c) (d) (e) Plan view of corner with ties to at least 4 witness monuments. If in disagreement with previously established corner, show the distances between the two corners and also indicate the ties to the disputed corner.



(i) I, Jerome N. Kraemer, Reg. Land Surveyor No. S-1234  
 (type or print name) certify that the corner location on this record was determined by me or under my direction and control and that this U.S. Public Land Survey Monument Record is correct and complete to the best of my knowledge and belief.

Jerome N. Kraemer February 25th, 1986  
 Signature Date



Index No. 213

3707042000