

U.S. PUBLIC LAND SURVEY MONUMENT RECORD

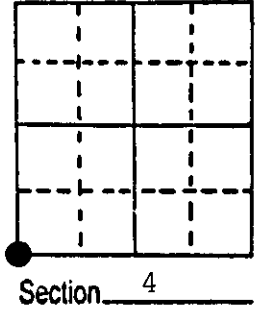
Note: This form is intended and designed to fulfill all requirements of Wisconsin Administrative Code, Chapter A-E 5.02, U.S. Public Land Survey Monument Record (3) (a) (b) (c) (d) (e) (f) (g) (h) (i). An additional sheet may be added if necessary to conform with said requirements.

(a) Corner location: Township 37 North

Range 7 East

Town Cassian

County Oneida

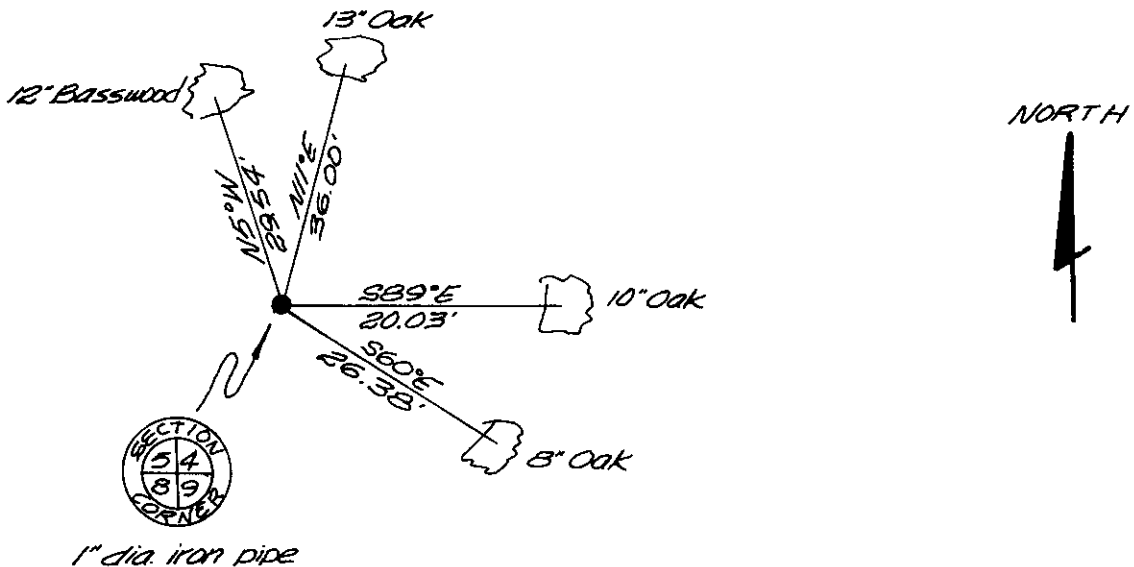


(b) (f) (g) (h) Description of monument found at this corner and if it was accepted, state all evidence (material, testimonial, occupational, plats, records, other monuments) used as a basis for accepting. If not accepted or if nothing was found, state evidence used as basis for establishing location. If reestablished through lost corner proportionate methods, indicate all monuments, distances and directions used to establish.

November 1862 - Joseph Jenkins, Deputy Surveyor - Set post corner to sections 4, 5, 8 and 9. Original bearing trees:
 W. Pine 10" N55°W, 12 links
 W. Pine 7" N27°E, 7 links
 W. Pine 9", S17°W, 50 links
 W. Pine 8", S50°E, 30 links

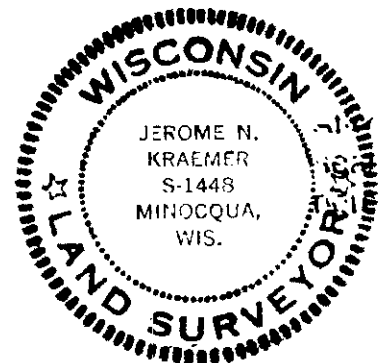
February 1986 - Jerome N. Kraemer finds 1" dia. iron pipe protruding up 4" above ground level with 1/2" dia. stainless steel shaft driven into 1" dia. iron pipe. Scribed square cedar post (O.-I.) 1' north of iron pipe. Established new bearing as shown in plan view below.
 Note: Distances measured to nail set in base of bearing tree.

(c) (d) (e) Plan view of corner with ties to at least 4 witness monuments. If in disagreement with previously established corner, show the distances between the two corners and also indicate the ties to the disputed corner.



(i) I, Jerome N. Kraemer, Registered Land Surveyor (type or print name) certify that the corner location on this record was determined by me or under my direction and control and that this U.S. Public Land Survey Monument Record is correct and complete to the best of my knowledge and belief.

Jerome N. Kraemer Signature February 25th, 1986 Date



Index No. E-9

3707050000

U.S. PUBLIC LAND SURVEY MONUMENT RECORD

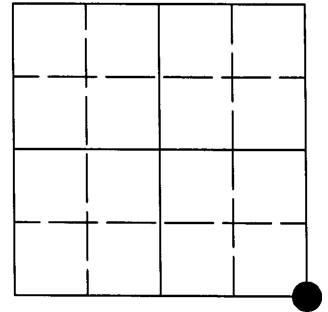
Note: This form is intended and designed to fulfill all requirements of the Wisconsin Administrative Code, Chapter A-E 7.08 U.S. Public Land Monument Record (3)(a)(b)(c)(d)(e)(f)(g)(h)(i). An additional sheet may be added if necessary to conform with said requirements.

(a) CORNER LOCATION:

Southeast corner of Section 5
 Township 37 North
 Range 7 East
 Town of Cassian
 County of Oneida
 Wisconsin

COORDINATES

North: 193754.4152
 East: 207761.6419
 Control Station: Oneida County #283S
 Latitude: 45° 43' 02.6417" N
 Longitude: 89° 37' 53.3933" W
 Datum: NAD-83(1991)
 Method: Real Time Kinematic - Offset



SECTION 5

(b) HISTORY OF ORIGINAL CORNER ESTABLISHMENT

Original Surveyor: Joseph H. Jenkins; Set post corner	Original B.T.'S: 10" Wh. Pine; N55°W; 12 links
Date of Survey: Commenced - November 3, 1862	7" Wh. Pine; N27°E; 7 links
Completed - November 15, 1862	9" Wh. Pine; S17°W; 50 links
	8" Wh. Pine; S50°E; 30 links

(f)(g)(h) DESCRIPTION OF MONUMENT FOUND AT THIS CORNER AND IF IT WAS ACCEPTED, STATE ALL EVIDENCE (MATERIAL, TESTIMONIAL, OCCUPATIONAL, PLATS, RECORDS, OTHER MONUMENTS) USED AS A BASIS FOR ESTABLISHING LOCATION. IF NOT ACCEPTED OF IF NOTHING WAS FOUND, STATE EVIDENCE USED AS BASIS FOR ESTABLISHING LOCATION. IF REESTABLISHED THROUGH LOST CORNER PROPORTIONATE METHODS, INDICATE ALL MONUMENTS, DISTANCES AND DIRECTIONS USED TO ESTABLISH. INDICATE TYPE OF MONUMENT AND SIGN POST FOUND OR SET.

August 6, 1980 - William H. Sluth, S-1418, shows an iron pipe or cap for section corner location in a "Survey of Sec. 5 for Owens-Illinois Boundaries".

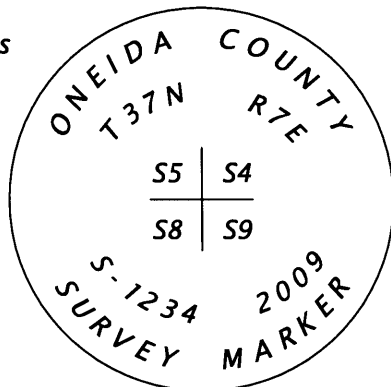
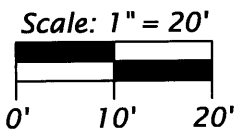
February 1986 - Jerome N. Kraemer, S-1448, finds 1" dia. iron pipe protruding up 4" above ground level with 1/2" dia. stainless steel shaft driven into 1" dia. iron pipe. Scribed square cedar post (O.-I.) 1' north of iron pipe. (U.S. Public Land Survey Monument Record)

June 29, 2009 - I. James D. Rein, Professional Land Surveyor No. S-1234, found a 2" o.d. iron pipe with a 1" o.d. iron pipe and a 0.75" iron rod inside. I replaced the found iron pipe with an Oneida County capped 2.4" o.d. x 30" long flange bottom aluminum monument and re-measured to the existing bearing trees as shown in the sketch below.

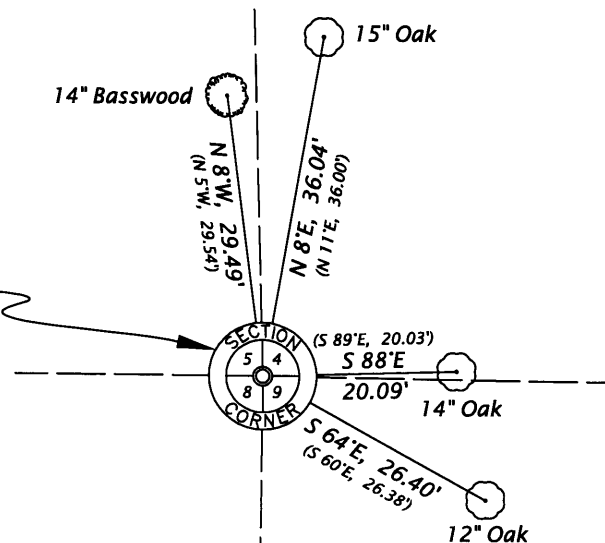
(c)(d)(e) PLAN VIEW OF CORNER WITH TIES TO AT LEAST 4 WITNESS MONUMENTS. IF IN DISAGREEMENT WITH PREVIOUSLY ESTABLISHED CORNER, SHOW THE DISTANCE BETWEEN THE TWO CORNERS AND ALSO INDICATE THE TIES TO THE DISPUTED CORNER.

NOTE: The bearings shown hereon are magnetic by hand-held compass and the distances are to existing nails (Kraemer) in the base of the bearing trees.

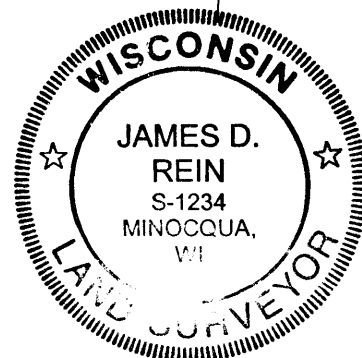
() = Bearing and distance by Kraemer.



Replaced a 2.0" o.d. iron pipe with an Oneida County capped aluminum monument, up 6". (White plastic marker post bears North, 1')



(i) I, JAMES D. REIN, PROFESSIONAL LAND SURVEYOR NO. S-1234 HEREBY CERTIFY THAT THE CORNER LOCATION ON THIS RECORD WAS DETERMINED BY ME OR UNDER MY DIRECTION AND CONTROL AND THAT THIS U.S. PUBLIC LAND SURVEY MONUMENT RECORD IS CORRECT AND COMPLETE TO THE BEST OF MY KNOWLEDGE AND BELIEF.



SIGNATURE

7/30/09
DATE

3707050000

INDEX NO. E 9