

At \_\_\_\_\_ O'Clock \_\_\_\_\_ M

U.S. PUBLIC LAND SURVEY MONUMENT RECORD

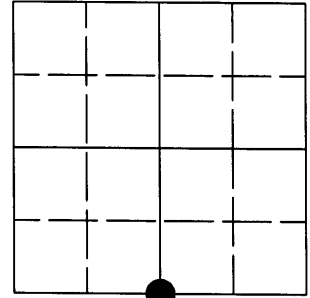
Note: This form is intended and designed to fulfill all requirements of the Wisconsin Administrative Code, Chapter A-E 7.08 U.S. Public Land Monument Record (3)(a)(b)(c)(d)(e)(f)(g)(h)(i). An additional sheet may be added if necessary to conform with said requirements.

(a) CORNER LOCATION:

South quarter corner of Section 5  
Township 37 North  
Range 7 East  
Town of Cassian  
County of Oneida  
Wisconsin

COORDINATES

North: 193779.5086  
East: 205146.3604  
Control Station: Oneida County #283S  
Latitude: 45° 43' 02.8597" N  
Longitude: 89° 38' 30.2499" W  
Datum: NAD-83(1991)  
Method: Traverse from RTK control



SECTION 5

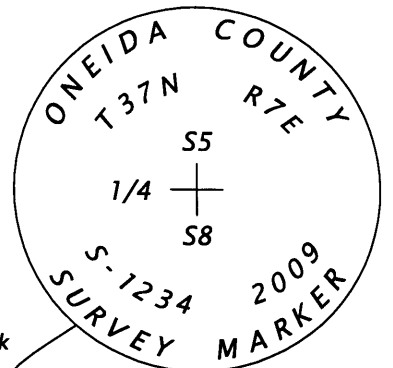
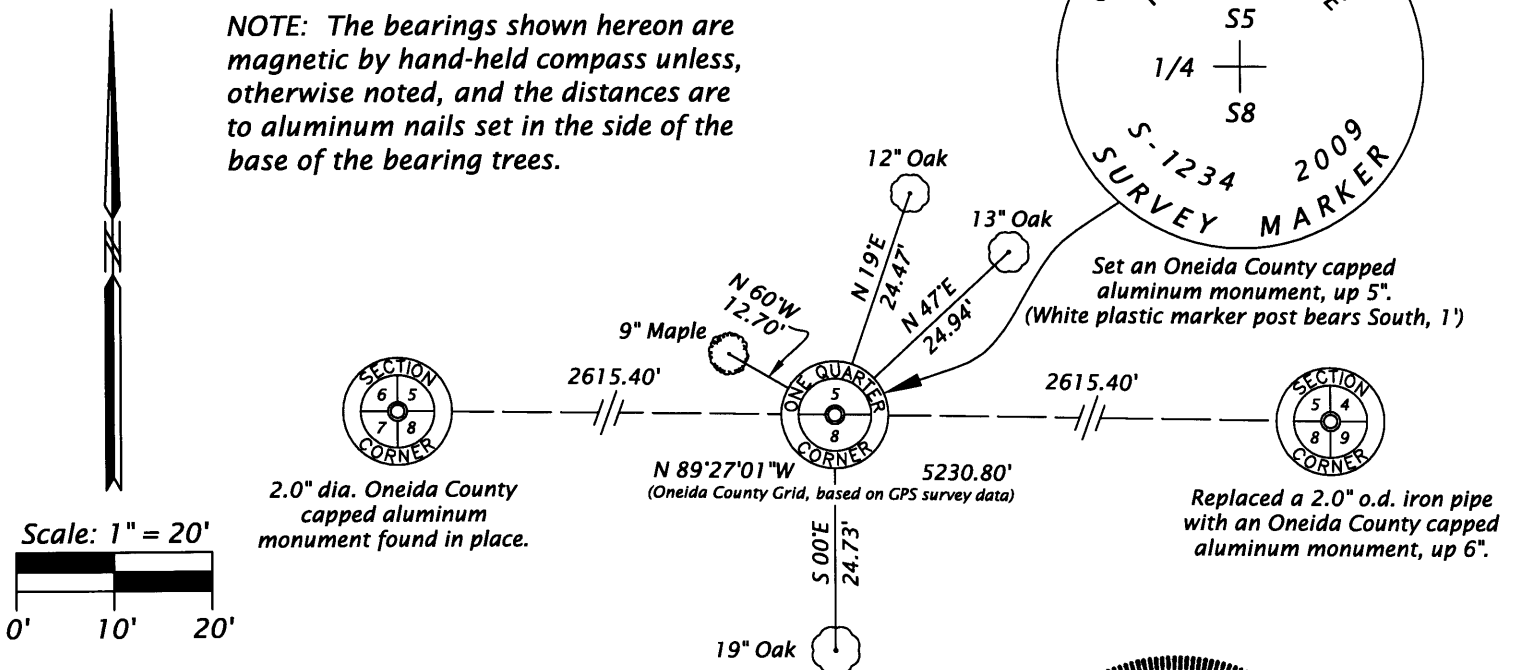
(b) HISTORY OF ORIGINAL CORNER ESTABLISHMENT

Original Surveyor: Joseph H. Jenkins; Set 1/4 Section post Original B.T.'S: 10" Yellow Pine; S78°E; 10 links  
Date of Survey: Commenced - November 3, 1862 8" Yellow Pine; N50°E; 50 links  
Completed - November 15, 1862

(f)(g)(h) DESCRIPTION OF MONUMENT FOUND AT THIS CORNER AND IF IT WAS ACCEPTED, STATE ALL EVIDENCE (MATERIAL, TESTIMONIAL, OCCUPATIONAL, PLATS, RECORDS, OTHER MONUMENTS) USED AS A BASIS FOR ESTABLISHING LOCATION. IF NOT ACCEPTED OF IF NOTHING WAS FOUND, STATE EVIDENCE USED AS BASIS FOR ESTABLISHING LOCATION. IF REESTABLISHED THROUGH LOST CORNER PROPORTIONATE METHODS, INDICATE ALL MONUMENTS, DISTANCES AND DIRECTIONS USED TO ESTABLISH. INDICATE TYPE OF MONUMENT AND SIGN POST FOUND OR SET.

July 16, 2009 - I, James D. Rein, Professional Land Surveyor No. S-1234, searched for, but was unable to locate any evidence of the corner. I Set an Oneida County capped 2.4" o.d. x 30" long flange bottom aluminum monument by single proportionate method at the mid-point of the south line of Section 5. I also made four (4) new bearing trees as shown in the sketch below.

(c)(d)(e) PLAN VIEW OF CORNER WITH TIES TO AT LEAST 4 WITNESS MONUMENTS. IF IN DISAGREEMENT WITH PREVIOUSLY ESTABLISHED CORNER, SHOW THE DISTANCE BETWEEN THE TWO CORNERS AND ALSO INDICATE THE TIES TO THE DISPUTED CORNER.



(i) I, JAMES D. REIN, PROFESSIONAL LAND SURVEYOR NO. S-1234 HEREBY CERTIFY THAT THE CORNER LOCATION ON THIS RECORD WAS DETERMINED BY ME OR UNDER MY DIRECTION AND CONTROL AND THAT THIS U.S. PUBLIC LAND SURVEY MONUMENT RECORD IS CORRECT AND COMPLETE TO THE BEST OF MY KNOWLEDGE AND BELIEF

*[Signature]*  
SIGNATURE

7/30/09  
DATE

3707050020

INDEX NO. E 7