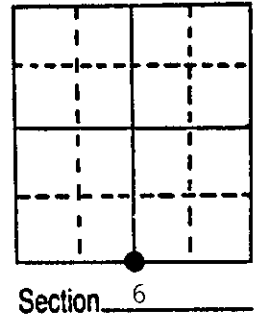
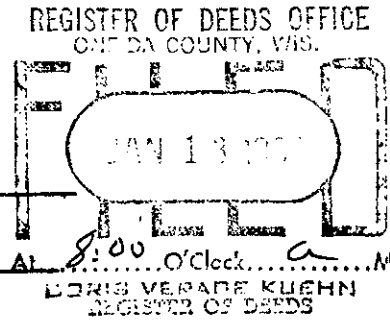


# U.S. PUBLIC LAND SURVEY MONUMENT RECORD

**Note:** This form is intended and designed to fulfill all requirements of Wisconsin Administrative Code, Chapter A-E 5.02, U.S. Public Land Survey Monument Record (3) (a) (b) (c) (d) (e) (f) (g) (h) (i). An additional sheet may be added if necessary to conform with said requirements.

(a) Corner location: Township 37 North  
 Range 7 East/West  
 Town/City/Village Cassian  
 County Oneida

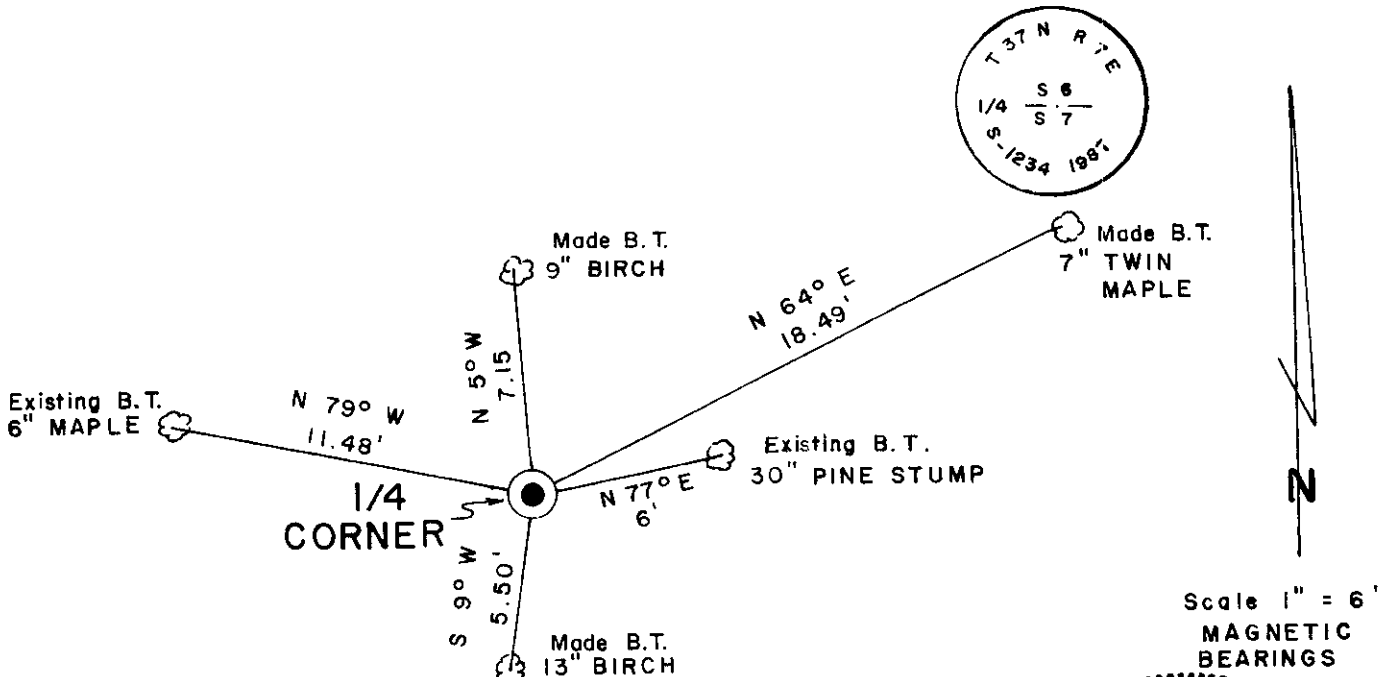


(b) (f) (g) (h) Description of monument found at this corner and if it was accepted, state all evidence (material, testimonial, occupational, plats, records, other monuments) used as a basis for accepting. If not accepted or if nothing was found, state evidence used as basis for establishing location. If reestablished through lost corner proportionate methods, indicate all monuments, distances and directions used to establish.

November 1862 - Joseph Jenkins, Deputy Surveyor - Set 1/4 Section Post. Original Bearing  
 Trees: Sugar 8" N38°E, 34 links and Fir 6" S1°W, 12 links.  
 April 19, 1907 - D. H. Vaughan, Oneida County Surveyor - Found S 1/4 Post NE tree a stub nearly gone. New W. Pine stp. 30" N84°E, 8 1/2 links.  
 June 1960 - James G. Griffin, Land Surveyor - Field notes for survey in Pottawatomie Park. Found old B.T. for S 1/4. Got Vaughan's notes (1907) and reset 1/4 from stump.  
 July 11th, 1987 - James D. Rein, RLS - Replaced found 1 1/2" dia. iron pipe with a capped 2" dia. x 30" long flanged bottom aluminum monument marked as shown in plan. ± 30" Pine stp N77°E, 6 feet. An old post wired to angle iron bears S72°E, 4.6 feet. Existing Bearing tree: 6" Maple N79°W, 11.48 feet. Set plastic post southwest 1 1/2 feet from corner and made new bearing trees as shown in plan.

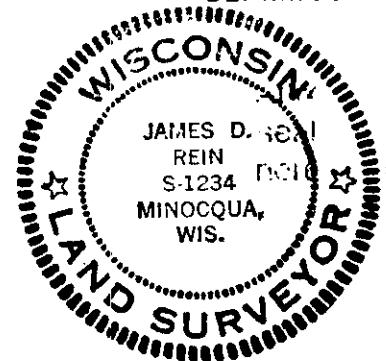
(c) (d) (e) Plan view of corner with ties to at least 4 witness monuments. If in disagreement with previously established corner, show the distances between the two corners and also indicate the ties to the disputed corner.

CAPPED ALUMINUM MONUMENT  
IS STAMPED AS SHOWN



(i) I, James D. Rein, Registered Land Surveyor No. S-1234  
 (type or print name) certify that the corner location on this record was determined by me or under my direction and control and that this U.S. Public Land Survey Monument Record is correct and complete to the best of my knowledge and belief.

James D. Rein Signature      August 17th, 1987 Date



Index No. E-3

3707060020