

# U.S. PUBLIC LAND SURVEY MONUMENT LOCATION RECORD

Recorders Data

CORNER: South Witness MC SECTION: 5 TOWNSHIP 37 NORTH RANGE 7 EAST/WEST

FOR M.C. CORNER INDICATE: NAME OF WATERWAY Sand Lake SECTION LINE West

(CITY)(VILLAGE)(TOWN) OF: Cassian COUNTY OF: Oneida

Description of monument found or placed and all other evidence used as a basis for monument location; including all monuments and related measurements required if the corner location is reestablished by lost corner proportionate methods. Also indicate name of original surveyor, survey date, corner monument set and established bearing trees, witness or reference monuments with ties from available records.

Found and accepted an old rusted 2" dia. iron pipe with uncapped top 33" above existing grade at this corner location. The pipe was tipped about 30° NE, so I carefully removed it to reveal base location and replaced it with a standard 2" dia. by 30" long aluminum pipe monument with stamped Oneida County cap 1" above grade and placed a rock and broken pieces of concrete found nearby around the monument cap to protect and secure. I left the old 54" long iron pipe monument flat on grade nearby.

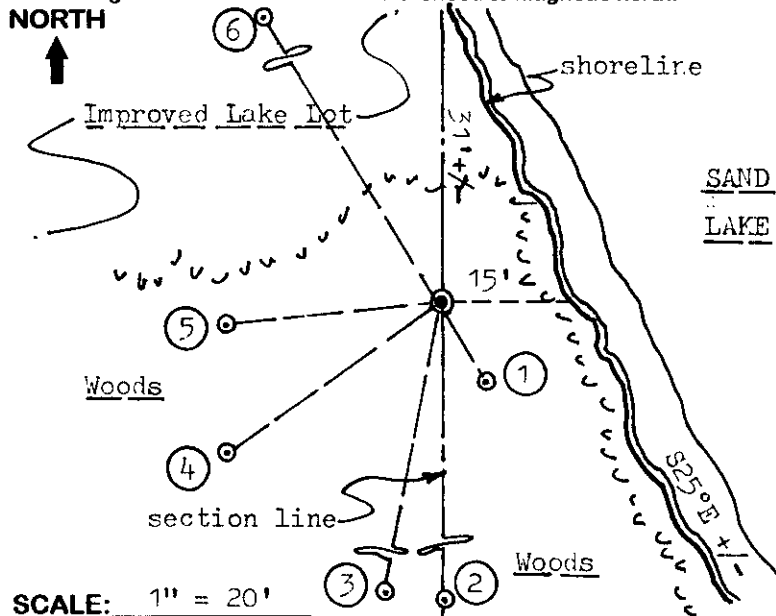
In 1862, Jerkins/GLO set a wood post as the meander corner, which would now fall about 300' North into existing lake, and marked OBTs a 10" Pw S05°E and a 10" Pw S47°W 14 lks which are now gone in lake bed, so this corner location accepted as a witness meander corner.

In 1953, Biberstine denotes an iron pipe monument I found per his Subdivision Plat of Sand Lake Subdivision filed in Oneida County records, 121' South of this MC corner location.

In 1969, McKnown denotes iron pipe monument symbols on the West line of Lot 1 of Sand Lake Subdivision Plat, and the one noted as M.C. is the iron pipe found at this location by my field measure verification; all per his Plat of Survey filed as L-114 in Oneida County survey records.

In 1980, Stuth/Owens-Illinois map of a Section 5 subdivision survey also notes an iron pipe monument at this location as an M.C. and an iron pipe witness 121'+ South as I had found.

Plan view map of monument location with bearing and distance ties to a minimum of four(4) described witness or reference monuments of concrete, natural stone, iron, live bearing trees or equivalent material. If applicable, also show a minimum of two(2) bearing and distance ties to any other monument found and not accepted; including the bearing and distance from the accepted monument. Indicate the basis for bearings of reference ties if not referenced to magnetic north.



**WITNESS MONUMENT TIES:**

- ① New BT 6" Hemlock S30°E 9.28'.
- ② Old uncapped 1 1/2" dia. iron pipe found, 12" high, South 121.0'.
- ③ New BT 14" Pw S11°W 41.01'.
- ④ New BT 14" Or S55°W 27.84'.
- ⑤ New BT 11" Bw S84°W 22.78'.
- ⑥ Old 1 1/2" dia. iron pipe found with uncapped top 5" above grade, N32°W 100.05'. (See L-114 map in Oneida Co. records)

Note: Standard white poly 'T' marker post set 10" North of corner monument. This recovery completed on 8-11-98 and was witnessed by nearby owner Donald Mattke with me on 7-20-98.

SCALE: 1" = 20'

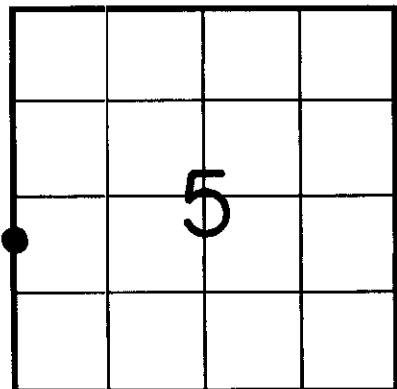
Unless otherwise indicated, all bearing tree ties are to a .25" dia. by 2.5" long PK nail with a 1.25" dia. steel washer driven into unblazed right face and a .25" dia. by 2.5" long PK nail with a 2" dia. steel washer stamped 'BT' is also driven into unblazed face of bearing tree at DBH; the basis for measured bearings is magnetic to nearest degree and all tie distances are horizontal measure to nearest 1/100th feet.

**LAND SURVEYOR CERTIFICATION:**

I, William C. Rohde, hereby certify that I am a duly licensed Professional Land Surveyor in Wisconsin, that this USPLS monument location was determined by me or under my direction and control, and that this U.S. Public Land Survey Monument Location Record is true and correct to the best of my knowledge and belief.

*William C. Rohde* Date: 8-24-98  
Signature

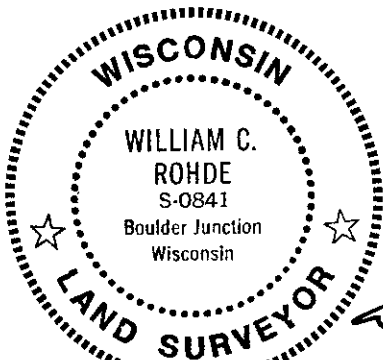
This form is intended to fulfill requirements of Chapter A-E 7.08 (3)(a)(b)(c)(d)(e)(f)(g)(h)(i) U.S. Public Land Survey Monument Location Record, Wisconsin Administrative Code. Use reverse side for geodetic location data and/or continuation purposes.



**SECTION LOCATION MAP**

INDEX NO. C, D-5  
3707061500

INDEX NO. C, D-5



RLS SEAL

SHEET NO. 1 OF 1