

U.S. PUBLIC LAND SURVEY MONUMENT LOCATION RECORD

Recorders Data

CORNER: North MC SECTION: 5 TOWNSHIP 37 NORTH RANGE 7 EAST/WEST

FOR M.C. CORNER INDICATE: NAME OF WATERWAY Sand Lake SECTION LINE West

(CITY)(VILLAGE)(TOWN) OF: Cassian COUNTY OF: Oneida

Description of monument found or placed and all other evidence used as a basis for monument location; including all monuments and related measurements required if the corner location is reestablished by lost corner proportionate methods. Also indicate name of original surveyor, survey date, corner monument set and established bearing trees, witness or reference monuments with ties from available records.

Old 2" dia. by 54" long iron pipe monument with uncapped top replaced by a standard 2" dia. by 30" long aluminum pipe monument with stamped Oneida County cap 4" above existing grade, and previously referenced by T. Loftus in 1992 per notes provided to Foltz & Associates, which I found undisturbed for new ties below.

In 1862, Jenkins/GLO set a wood post as the original meander corner and marked OBTs, a 7" Tamarack N08°E 20 lks and a 6" Tamarack N14°W 20 lks, all of which are now obliterated or of unreliability for positioning purposes.

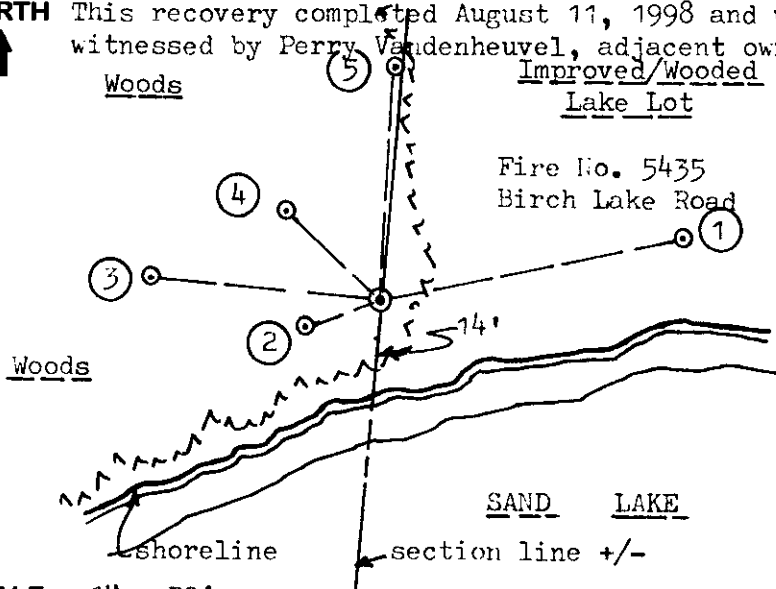
In 1953, Biberstine notes an iron pipe symbol on his Sand Lake Subdivision Plat filed in Oneida County records.

In 1957, Cameron/Northwoods Surveyors, notes an iron pipe symbol as MC and in parenthesis "(Orig. BT stumps)" at this corner location per his Plat of Survey filed in Foltz and Associates, Inc. records; formerly Northwoods Surveyors. In 1964, Griffin of Northwoods Surveyors also indicated an iron pipe at this MC per a plat of survey filed in Foltz and Associates, Inc. records.

In 1980, Stuth/Owens-Illinois on his 1987 map in Oneida Co. records, notes an iron pipe at this corner. In 1992, Plat of Survey B-2492, Oneida Co. records, by T. Loftus denotes this corner by legend. In 1993, Map A-664, Oneida records, by Foltz & Associates indicates an aluminum monument found at this corner location.

Plan view map of monument location with bearing and distance ties to a minimum of four(4) described witness or reference monuments of concrete, natural stone, iron, live bearing trees or equivalent material. If applicable, also show a minimum of two(2) bearing and distance ties to any other monument found and not accepted; including the bearing and distance from the accepted monument. Indicate the basis for bearings of reference ties if not referenced to magnetic north.

NORTH This recovery completed August 11, 1998 and was witnessed by Perry Vandenheuvel, adjacent owner Woods Improved/Wooded Lake Lot



WITNESS MONUMENT TIES:

- ① 60d spike found in right face of 18" Pw BT N78°E 48.09'.
- ② 60d spike found in right face of 5 1/2" Mr BT S71°W 12.57'.
- ③ 60d spike found in right face of 7" Or BT N84°W 36.40'.
- ④ 60d spike found in left face of 25" Pw BT N47°W 20.38'.
- ⑤ Old uncapped 2" dia. iron pipe found, 5" high, N03°E 36.58'.

Note: Standard white poly 'T' marker post set 6" North of corner monument.

SCALE: 1" = 30'

Unless otherwise indicated, all bearing tree ties are to a .25" dia. by 2.5" long PK nail with a 1.25" dia. steel washer driven into unblazed right face and a .25" dia. by 2.5" long PK nail with a 2" dia. steel washer stamped 'BT' is also driven into unblazed face of bearing tree at DBH; the basis for measured bearings is magnetic to nearest degree and all tie distances are horizontal measure to nearest 1/100th feet.

LAND SURVEYOR CERTIFICATION:

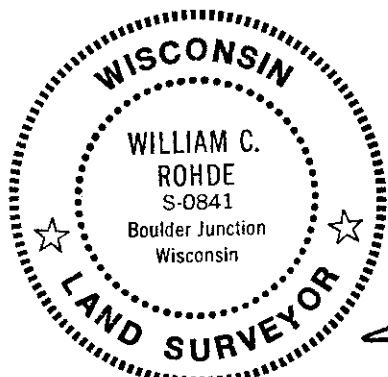
I, William C. Rohde, hereby certify that I am a duly licensed Professional Land Surveyor in Wisconsin, that this USPLS monument location was determined by me or under my direction and control, and that this U.S. Public Land Survey Monument Location Record is true and correct to the best of my knowledge and belief.

William C. Rohde Date: 8-25-98
Signature

This form is intended to fulfill requirements of Chapter A-E 7.08 (3)(a)(b)(c)(d)(e)(f)(g)(h)(i) U.S. Public Land Survey Monument Location Record, Wisconsin Administrative Code. Use reverse side for geodetic location data and/or continuation purposes.

	T37N		
	5		
	R7E		

INDEX NO. B-C-5



RLS SEAL

SHEET NO. 1 OF 1

SECTION LOCATION MAP

INDEX NO. B-C-5
3707062800