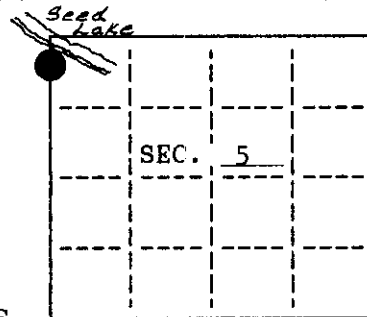


U.S. PUBLIC LAND SURVEY MONUMENT RECORD

Note: This form is intended and designed to fulfill all requirements of Wisconsin Administrative Code, Chapter A-E 7.08 U.S. Public Land Survey Monument Record (3)(a)(b)(c)(d)(e)(f)(g)(h)(i). An additional sheet may be added if necessary to conform with said requirements.

(a) CORNER LOCATION: State Plane Coordinates
 Meander corner of Sec. 5 X --
 Township 37 North Y --
 Range 7 East Datum Base --
 Town/City Cassian County of Oneida



(b) HISTORY OF ORIGINAL CORNER ESTABLISHMENT
 Original Surveyor: J. H. Jenkins
 Date of Survey: Commenced November, 1863
 Completed

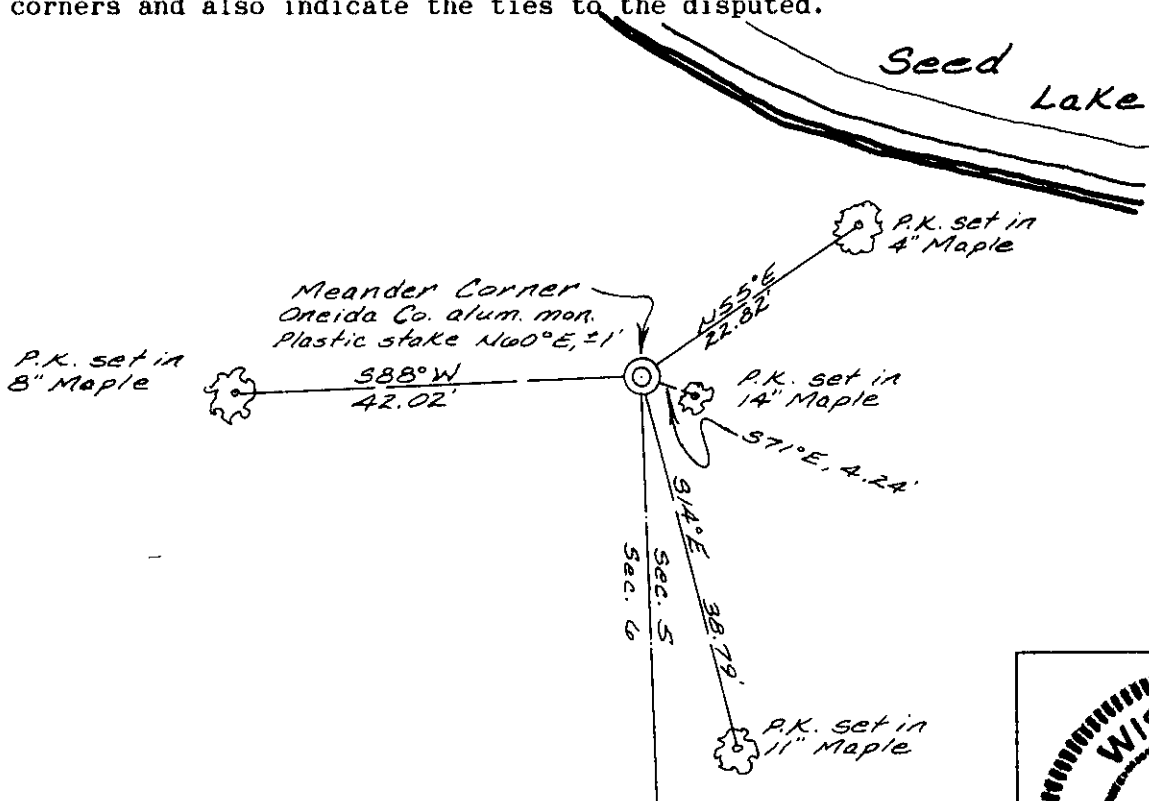
Original B.T.'S
 10" Tamarack, S48°W, 11 lks (7.26')
 8" Tamarack, N70°W, 6 lks

(b)(f)(g)(h) Description of monument found at this corner and if it was accepted, state all evidence (material, testimonial, occupational, plats, records, other monuments) used as a basis for accepting. If not accepted or if nothing was found, state evidence used as basis for establishing location. If reestablished through lost corner proportionate methods, indicate all monuments, distances and directions used to establish. Indicate type of monument and sign post found or set.

1957 - Northwoods Surveyors found an old wood post with 2 tips in swamp; they set a 1" iron rod at the post location to mark the Meander Corner.

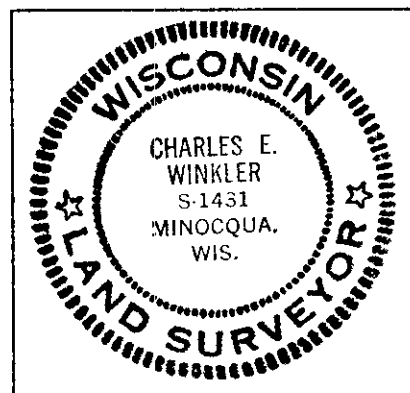
1993 - I found and accepted the 1" iron rod. I also found the remains of the pointed wood post. I also recovered the remains of a very badly rotted 10" Tamarack, S48°W, + 7'. I replaced the 1" iron rod with an Oneida County aluminum monument.

(c)(d)(e) Plan view of corner with ties to at least 4 witness monuments. If in disagreement with previously established corner, show the distances between the two corners and also indicate the ties to the disputed.



(i) I, Charles E. Winkler, S-1431 hereby certify that the corner location on this record was determined by me or under my direction and control and that this U.S. Public Land Survey Monument Record is correct and complete to the best of my knowledge and belief.

Signature Charles E. Winkler Date 7-13-1993
 Inman-Foltz & Associates, Inc.



INDEX NO. AB-5

3707063800