

At _____ O'Clock _____ M
THOMAS H. LEIGHTON
REGISTER OF DEEDS

This form is intended to fulfill the requirements of Chapter A-E7.08 (3)(a) thru (i) U.S. Public Land Survey Monument Location Record, Wisconsin Administrative Code. Use the reverse side of form for continuation.

U.S. PUBLIC LAND SURVEY MONUMENT LOCATION RECORD

Recorders Data

USPLS CORNER: **EAST WITNESS MC** SECTION: **16** TOWNSHIP: **37** NORTH RANGE: **7** EAST
NAME OF WATERWAY FOR M.C. CORNER : **HORSEHEAD LAKE WEST** SECTION LINE: **NORTH**
~~(CITY)(VILLAGE)(TOWN)~~ OF: **CASSIAN** COUNTY OF: **ONEIDA**

Description of monument found or placed and all other evidence used as the basis for monument location; including monuments and measurements required if the corner location was reestablished by lost corner proportionate methods. Also indicate name of the original surveyor, original survey date and the corner monument, bearing trees, witness or other reference monuments established, including measured bearing and distance ties, from available survey records.

In November 1862, Joseph H. Jenkins/GLO set a wood post as original MC and noted OBTs: an 8" Bw N30°E 28 links and a 10" Bw S12°W 8 links; all now obliterated.

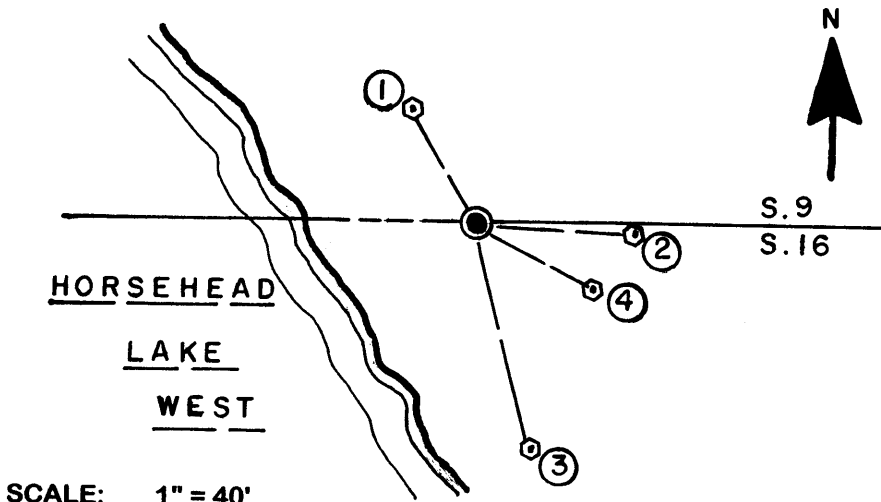
In August 1982, David F. McMullen/RLS 1340, found a 1.25" dia. iron pipe at this Witness MC and noted a 24" Pw BT N27°W 26.1' per Plat of Horsehead filed in Oneida County records.

In May 1984, David F. McMullen/RLS 1340, notes an iron pipe found at this Witness MC and same 24" Pw BT per Certified Survey Map No. 1059/1059A filed in Oneida County records.

On June 29, 2006 I found an old 1.25" dia. iron pipe OK with uncapped top 21" above grade at Easterly edge of a cleared and improved lakeshore lot to the West and the old 24" Pw BT per above records with lower face blaze nearly shut. I carefully pulled the old 52" long iron pipe and drove a standard 2" dia. x 30" long aluminum pipe monument with stamped Oneida County cap into the soil cavity left by the old iron pipe to 5" above grade. The corner falls 31'+/- East of existing lakeshore line at OHWM bearing S30°E.

I set a standard white poly 'T' marker post N65°E 7.3' as refusal below grade nearer to monument. There were no direct witnesses.

Plan view map of monument location with bearing and distance ties to a minimum of four(4) described witness or reference monuments of concrete, natural stone, iron, live bearing trees or equivalent material. If applicable, also show a minimum of two(2) bearing and distance ties to any other monument found and not accepted; including the bearing and distance from the accepted monument.



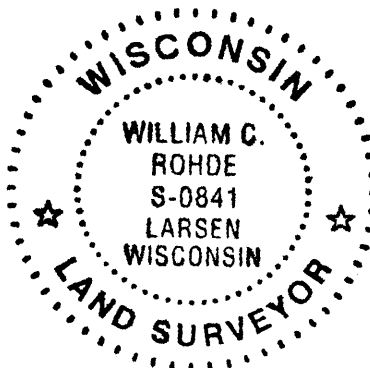
SCALE: 1" = 40'

Unless otherwise indicated, all bearing tree ties are to a .25" dia. by 2.5" long PK nail with a 1.25" dia. steel washer driven into unblazed right face and a .25" dia. by 2.5" long PK nail with a 2" dia. steel washer stamped BT is also driven into unblazed face of bearing tree at DBH; the basis for measured bearings is by compass to nearest degree and all tie distances are measured horizontal by steel tape corrected to nearest 1/100th feet at standard temperature of 68° F.

WITNESS MONUMENT TIES:

- ① Old 24" Pw BT N30°W 27.37'.
- ② New 9" Mr BT of clump of four at S88°E 33.60'.
- ③ New 18" Hemlock BT S15°E 48.70' to PK/W in right face 41" above grade.
- ④ New 10" Hemlock BT S63°E 28.51' to PK/W in left face 20" above grade.

RLS SEAL:



LAND SURVEYOR CERTIFICATE:

I, William C. Rohde, hereby certify that I am duly licensed as a Professional Land Surveyor in the State of Wisconsin; that this USPLS monument location was determined by me and/or under my direct supervision and control; and that this U.S. Public Land Survey Monument Location Record is true and correct to the best of my knowledge and belief.

Signed: *William C. Rohde*
William C. Rohde RLS 841

