

REGISTER OF DEEDS OFFICE  
ONEIDA COUNTY, WIS.  
**FILLED**  
AUG 19 2003  
At \_\_\_\_\_ o'clock \_\_\_\_\_ M  
**THOMAS H. LEIGHTON**  
REGISTER OF DEEDS  
Recorders Data

This form is intended to fulfill the requirements of Chapter A-E7.08 (3)(a) thru (i) U.S. Public Land Survey Monument Location Record, Wisconsin Administrative Code. Use the reverse side of form for continuation.

**U.S. PUBLIC LAND SURVEY MONUMENT LOCATION RECORD**

USPLS CORNER: NORTH MC SECTION: 10 TOWNSHIP: 37 NORTH RANGE: 7 EAST  
 NAME OF WATERWAY FOR M.C. CORNER : EAST HORSEHEAD LAKE SECTION LINE: WEST  
 (CITY)(VILLAGE)(TOWN) OF: CASSIAN COUNTY OF: ONEIDA

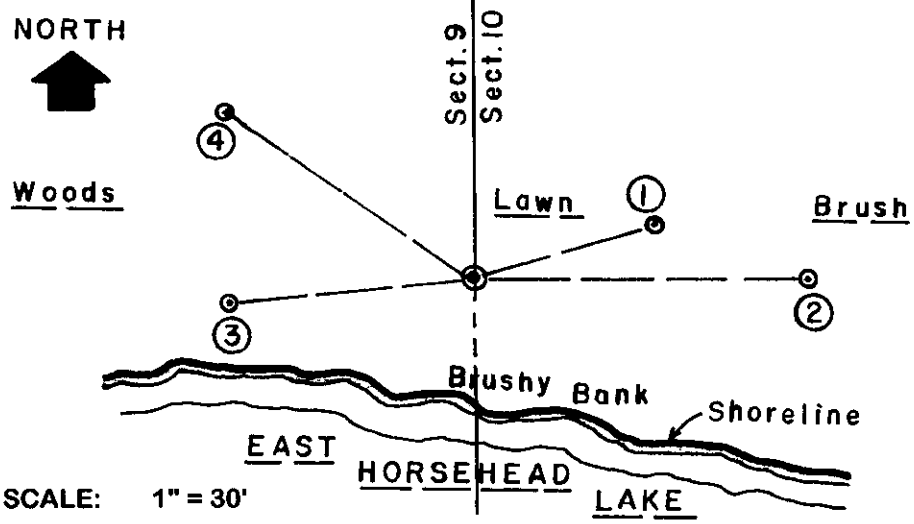
Description of monument found or placed and all other evidence used as the basis for monument location; including monuments and measurements required if the corner location was reestablished by lost corner proportionate methods. Also indicate name of the original surveyor, original survey date and the corner monument, bearing trees, witness or other reference monuments established, including measured bearing and distance ties, from available survey records.

Scribed Cedar post found by Foltz in 1975 is now gone; however, I found the 2" iron pipe that he had set at this corner OK with uncapped top 6" below existing lawn grade, which I left in place and set a 5/8" dia. by 24" long rebar with stamped 2.5" dia. aluminum cap into the center of old iron pipe flush with its top per approval of Oneida County Surveyor. Corner falls 21' North of existing brushy lakeshore bearing S75°E; I set a standard white poly 'T' marker post 17.2' South of the corner monument at South edge of lawn area for improved lake lot at Fire No. 8045 East Horsehead Heights Road.

In November 1862, Joseph H. Jenkins/GLO set a wood post as the original corner and noted OBTs: 10" Fir N73°W 20 links and an 8" Tamarack N42°E 18 links; all are now obliterated. In September 1910, D.H. Vaughan notes this MC per Plat of Survey B-2353 in Oneida County survey records. In December 1961, Ivan Branham/RLS 236 notes this corner as original MC per Plat of Survey L-1762 in Oneida County survey records. Per Page 113 of Maines Book 1 in Oneida County survey records, V.M. Maine found point of original GLO wood post and GLO Fir OBT as a stub with marks plain N44°E 0.185 chains and the remains of GLO OBT Fir NW, all now obliterated, but Maine set a new Cedar post at the corner and marked new BTs: a 14" Pr N52°W 0.82 chains, now gone, and a 6" Cedar N71°E 0.75 chains, now a low rotted stump. In August 1975, Stuart Foltz/RLS 1170 found Maines Cedar post and NE Cedar BT as a stump and set a 2" dia. iron pipe on the North side of the old post as the MC monument per County Plat of Tally-Ho in Cabinet 2 Sheet 272 Oneida County records.

This recovery completed May 14, 2003; there were no direct witnesses.

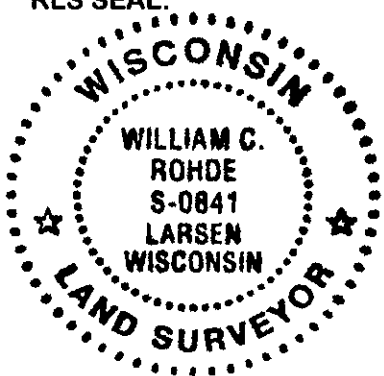
Plan view map of monument location with bearing and distance ties to a minimum of four(4) described witness or reference monuments of concrete, natural stone, iron, live bearing trees or equivalent material. If applicable, also show a minimum of two(2) bearing and distance ties to any other monument found and not accepted; including the bearing and distance from the accepted monument.



- WITNESS MONUMENT TIES:**
- ① New twin 8" Mr BT N73°E 28.55'.
  - ② 1.5" dia. iron pipe found OK with uncapped top 20" up East 51.24'.
  - ③ New 14" Mr BT S85°W 37.91'.
  - ④ New 10" Mr BT N55°W 45.73'.

Unless otherwise indicated, all bearing tree ties are to a .25" dia. by 2.5" long PK nail with a 1.25" dia. steel washer driven into unblazed right face and a .25" dia. by 2.5" long PK nail with a 2" dia. steel washer stamped BT is also driven into unblazed face of bearing tree at DBH; the basis for measured bearings is by compass to nearest degree and all tie distances are measured horizontal by steel tape corrected to nearest 1/100th feet at standard temperature of 68° F.

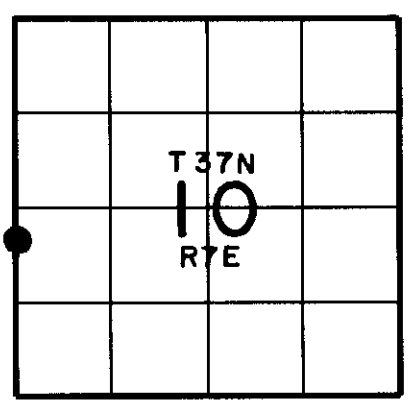
RLS SEAL:



LAND SURVEYOR CERTIFICATE:

I, William C. Rohde, hereby certify that I am duly licensed as a Professional Land Surveyor in the State of Wisconsin; that this USPLS monument location was determined by me and/or under my direct supervision and control; and that this U.S. Public Land Survey Monument Location Record is true and correct to the best of my knowledge and belief.

Signed William C. Rohde  
 William C. Rohde RLS 841



SECTION LOCATION MAP  
 INDEX NO. 6-H 13

3707091600