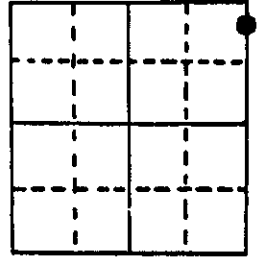


U.S. PUBLIC LAND SURVEY MONUMENT RECORD

Note: This form is intended and designed to fulfill all requirements of Wisconsin Administrative Code, Chapter A-E 5.02, U.S. Public Land Survey Monument Record (3) (a) (b) (c) (d) (e) (f) (g) (h) (i). An additional sheet may be added if necessary to conform with said requirements.

(a) Corner location: Township 37 North
 Range 7 East

Witness
 Corner



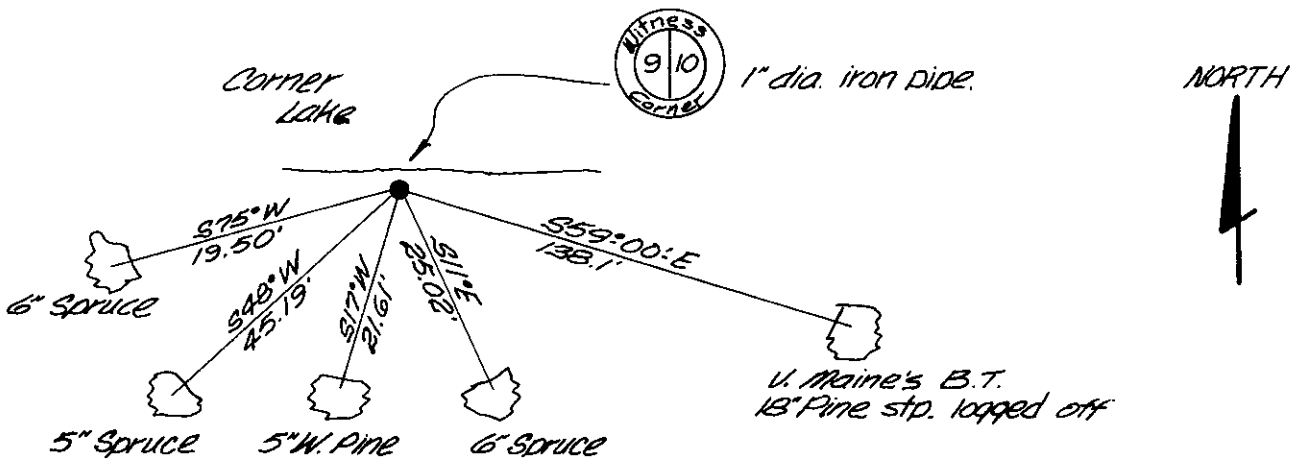
Town Cassian
 County Oneida

Section 9

(b) (f) (g) (h) Description of monument found at this corner and if it was accepted, state all evidence (material, testimonial, occupational, plats, records, other monuments) used as a basis for accepting. If not accepted or if nothing was found, state evidence used as basis for establishing location. If reestablished through lost corner proportionate methods, indicate all monuments, distances and directions used to establish.

- November 1862 - Joseph Jenkins, Deputy surveyor - Set witness post For corner to sections 3, 4, 9 and 10. Original bearing trees: Spruce 6" S35°E, 12 links.
 Spruce 6" N81°W, 30 links.
- October 1936 - Maine set new stake for original gov't W.C. as identified by point of original gov't. stake and original bearing tree. Established new W.P. 14" S61°E, 2.12½ chains.
- February 1986 - Jerome N. Kraemer finds 1" dia. iron pipe 1 foot under water, old square wood post and Maine's B.T. stump, scribe marks visible, to identify corner. Established new bearing trees and set new tamarack post North 2 feet. Distances measured to nail set in bearing tree.

(c) (d) (e) Plan view of corner with ties to at least 4 witness monuments. If in disagreement with previously established corner, show the distances between the two corners and also indicate the ties to the disputed corner.



(i) I, Jerome N. Kraemer, Reg. Land Surveyor No. S-1234
 (type or print name) certify that the corner location on this record was determined by me or under my direction and control and that this U.S. Public Land Survey Monument Record is correct and complete to the best of my knowledge and belief.

Jerome N. Kraemer February 25th, 1986
 Signature Date



Index No. EF-13

3707093600