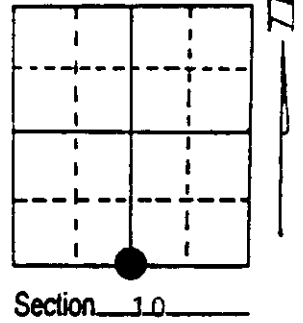


# U.S. PUBLIC LAND SURVEY MONUMENT RECORD

Note: This form is intended and designed to fulfill all requirements of Wisconsin Administrative Code, Chapter A-E 7.08 U.S. Public Land Survey Monument Record (3) (a) (b) (c) (d) (e) (f) (g) (h) (i). An additional sheet may be added if necessary to conform with said requirements.

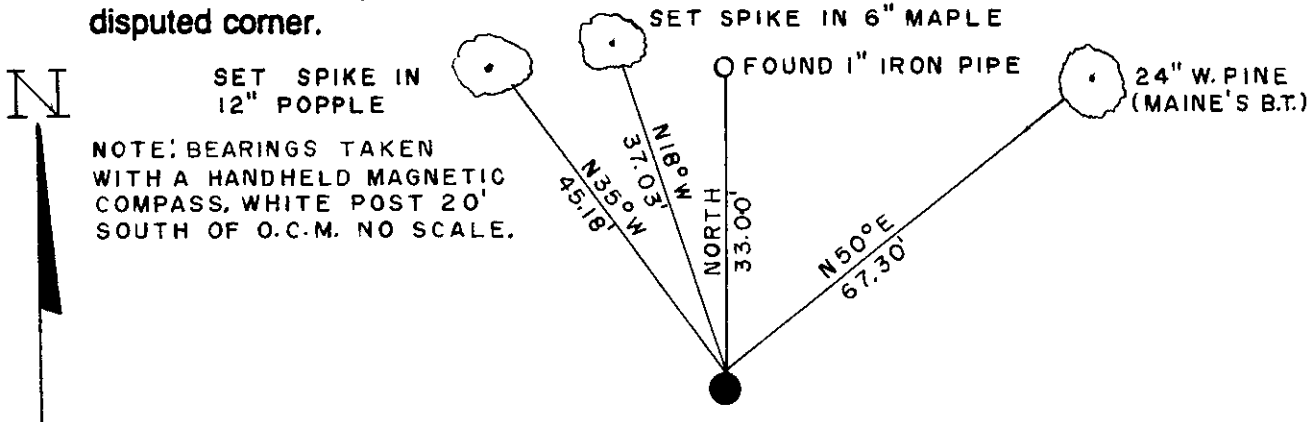
(a) Corner location: Township 37 North  
 Range 7 East ~~West~~  
 Town/City/Village Cassion  
 County Oneida



(b) (f) (g) (h) Description of monument found at this corner and if it was accepted, state all evidence (material, testimonial, occupational, plats, records, other monuments) used as a basis for accepting. If not accepted or if nothing was found, state evidence used as basis for establishing location. If reestablished through lost corner proportionate methods, indicate all monuments, distances and directions used to establish. Indicate type of monument found or set and sign post.

1862-J. Jenkins set post 7" Maple N 18° W, 20 links  
 10" White Pine S 75° W, 30 links  
 1936-Maine set iron pipe brass cap stamped identified by old stake and Stump of original Bts 10" White Pine S 75° W .30 ch. (nearly gone) & Vaughan's Bt stp. 16" N 37° E, .15½ ch. New Bts are: 6" White Pine N 50° E 1.02 ch.  
 3" Black Oak N 69° W, .54 ch.  
 1975-Jim Rein found 1½" iron pipe and Maine's Bt 20" White Pine N 50° E 67.3' 1" iron pipe N-33'  
 1992-William E. Bandow set Oneida County Monument and witnessed as shown below.

(c) (d) (e) Plan view of corner with ties to at least 4 witness monuments. If in disagreement with previously established corner, show the distances between the two corners and also indicate the ties to the disputed corner.



(i) I, William E. Bandow  
 (type or print name) certify that the corner location on this record was determined by me or under my direction and control and that this U.S. Public Land Survey Monument Record is correct and complete to the best of my knowledge and belief.

William E. Bandow 12-29-93  
 Signature Date



Index No. J-15

Stamp 3707100020

# U.S. PUBLIC LAND SURVEY MONUMENT RECORD

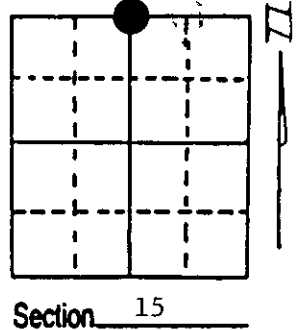
**Note:** This form is intended and designed to fulfill all requirements of Wisconsin Administrative Code, Chapter A-E 7.08 U.S. Public Land Survey Monument Record (3) (a) (b) (c) (d) (e) (f) (g) (h) (i). An additional sheet may be added if necessary to conform with said requirements.

(a) Corner location: Township 37 North

Range 7 East/West

Town/City/Village Cassian

County Oneida



(b) (f) (g) (h) Description of monument found at this corner and if it was accepted, state all evidence (material, testimonial, occupational, plats, records, other monuments) used as a basis for accepting. If not accepted or if nothing was found, state evidence used as basis for establishing location. If reestablished through lost corner proportionate methods, indicate all monuments, distances and directions used to establish. Indicate type of monument found or set and sign post.

Nov. 1862 - Joseph H. Jenkins established this corner/BTs:

10" White Pine, S75°W, 30 Links (19.80')

7" Maple, N18°W, 20 Links (13.20')

10/6/1936 - Vern Maine restored corner from original Pine BT and VAughan's BT:

16" White Pine Stump, N37°E, 15½ Links (10.23')

Maine set county monument/two BTs:

6" White Pine, N50°E, 1.02 Chains (67.32')

1993 - Someone placed a new aluminum monument 3" below road surface/two BTs:

6" Sugar Maple, N18°W, 36.98' 10" Aspen, N32°W, 45.18'

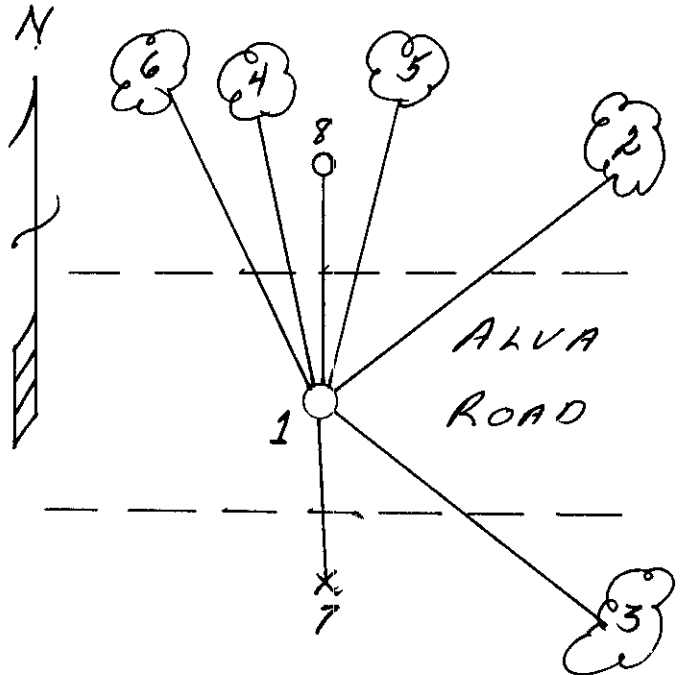
5/16/1996 - Milo E. Stefan found aluminum monument, both 1993 BTs and sign post. Not knowing of Maine's BT of 1936 and the poor condition of the 1993 BTs - I made new BTs and posted BT tags and scribed all BTs but the Aspen.

(c) (d) (e) Plan view of corner with ties to at least 4 witness monuments. If in disagreement with previously established corner, show the distances between the two corners and also indicate the ties to the disputed corner.

- 1) 2" x 30" Aluminum monument.
- 2) 24" White Pine, N50°E, 68.44' (67.30')\*
- 3) 12" Red Oak, S60°E, 100.24'
- 4) 6" Sugar Maple, N18°W, 36.98' (37.03')\*
- 5) 6" Red Maple, N13°E, 41.79'
- 6) 10" Aspen, N32°W, (45.18')\*
- 7) Plastic Sign Post, South, 18.7'
- 8) 1" Iron pipe, North, 33.00'\*

\*From William Badow's Cert., 1963

Distances from nail in side of BTs  
Stump blaze scribed "BT"  
BT tags on face of each BT



(i) I, Milo E. Stefan  
(type or print name) certify that the corner location on this record was determined by me or under my direction and control and that this U.S. Public Land Survey Monument Record is correct and complete to the best of my knowledge and belief.

Milo E. Stefan  
Signature

June 19, 1996  
Date



Index No. J-15

Stamp  
37C 710002C

# U.S. PUBLIC LAND SURVEY MONUMENT RECORD

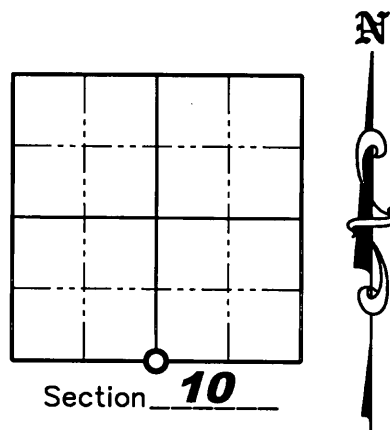
NOTE: This form is intended and designed to fulfill all requirements of Wisconsin Administrative Code, Chapter A-E 7 .08 U.S. Public Land Survey Monument Record (3)(a)(b)(c)(d)(e)(f)(g)(h)(i). An additional sheet may be added if necessary to conform with said requirements.

(a) Corner location: Township 37 North

Range 7 East

Town of CASSIAN

County of ONEIDA



Section 10

(b)(f)(g)(h) Description of monument found at this corner and if it was accepted, state all evidence (material, testimonial, occupation, plats, records, other monuments) used as a basis for accepting. If not accepted or if nothing was found, state evidence used as a basis for establishing location. If reestablished through lost corner proportionate methods, indicate all monuments, distances and directions used to establish. Indicate type of monument found or set and sign post.

**November 1862** – Joseph H. Jenkins set 1/4 post; BTs: 10" White Pine S75°W, 30 links; 7" Maple N18°W, 20 links.

**October 1936** – Vern Maine restored corner from original Pine BT and Vaughan's BT: 16" White Pine Stump N37°E, 15-1/2 links (10.23'). He set County Monument and two BT's: 6" White Pine N50°E, 1.02 chains; 3" Black Oak N69°W, 0.54 chains.

**1975**– James Rein found a 1-1/2" iron pipe and Maine's BT: 20" White Pine N50°E, 67.3'; 1" iron pipe North, 33.00'.


**October 1976**– John H. Fisher found a 1-1/2" iron pipe in place and a 20" White Pine N50°E, 67.3' (Maine's BT) per Certified Survey Map Number 337.

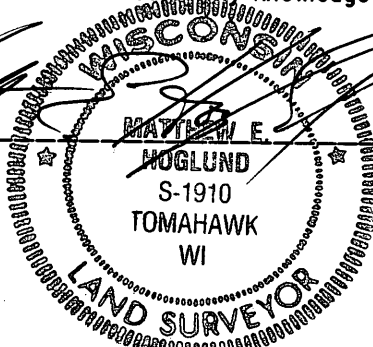
**1992**– William E. Bandow set Oneida County Monument. BTs; 24" White Pine N50°E, 67.30' (Maine's BT); 6" Maple N18°W, 37.03'; 12" Poplar N35°W, 45.18'; 1" iron pipe found North, 33.00'.

**May 1996**– Milo E. Stefan found Oneida County Aluminum Monument and BT's from 1993 in poor condition. BTs; 24" White Pine N50°E, 68.44' (Maine's BT); 6" Maple N18°W, 36.98'; 10" Aspen N32°W, 45.18'; 12" Red Oak S60°E, 100.24'; 6" Red Maple N13°E, 41.79'; 1" iron pipe found North, 33.00'.

**September 2007**– Matthew E. Hoglund, found an Oneida County Monument and all Bearing trees from 1996. While conducting a survey in Government Lot 6 we found monuments along the East line of said Government Lot 6 and after reviewing the evidence of our survey, project #520 in Government Lot 7, the Aluminum Monument was determined to NOT be in the proper place. We set a 3/4" by 24" iron rebar at the correct position and witnessed the corner as shown on sheet 2 hereof. See Plat of Survey dated 11/28/05 Oneida County Land Information Office Number C2275.

(i) I, Matthew E. Hoglund, certify that the corner location on this record was determined by me under my direction and control and that this U.S. Public Land Survey Monument is correct and complete to the best of my knowledge and belief.

Signature  Date 11/14/2007

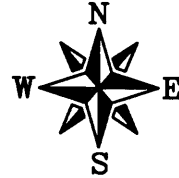


# U.S. PUBLIC LAND SURVEY MONUMENT RECORD

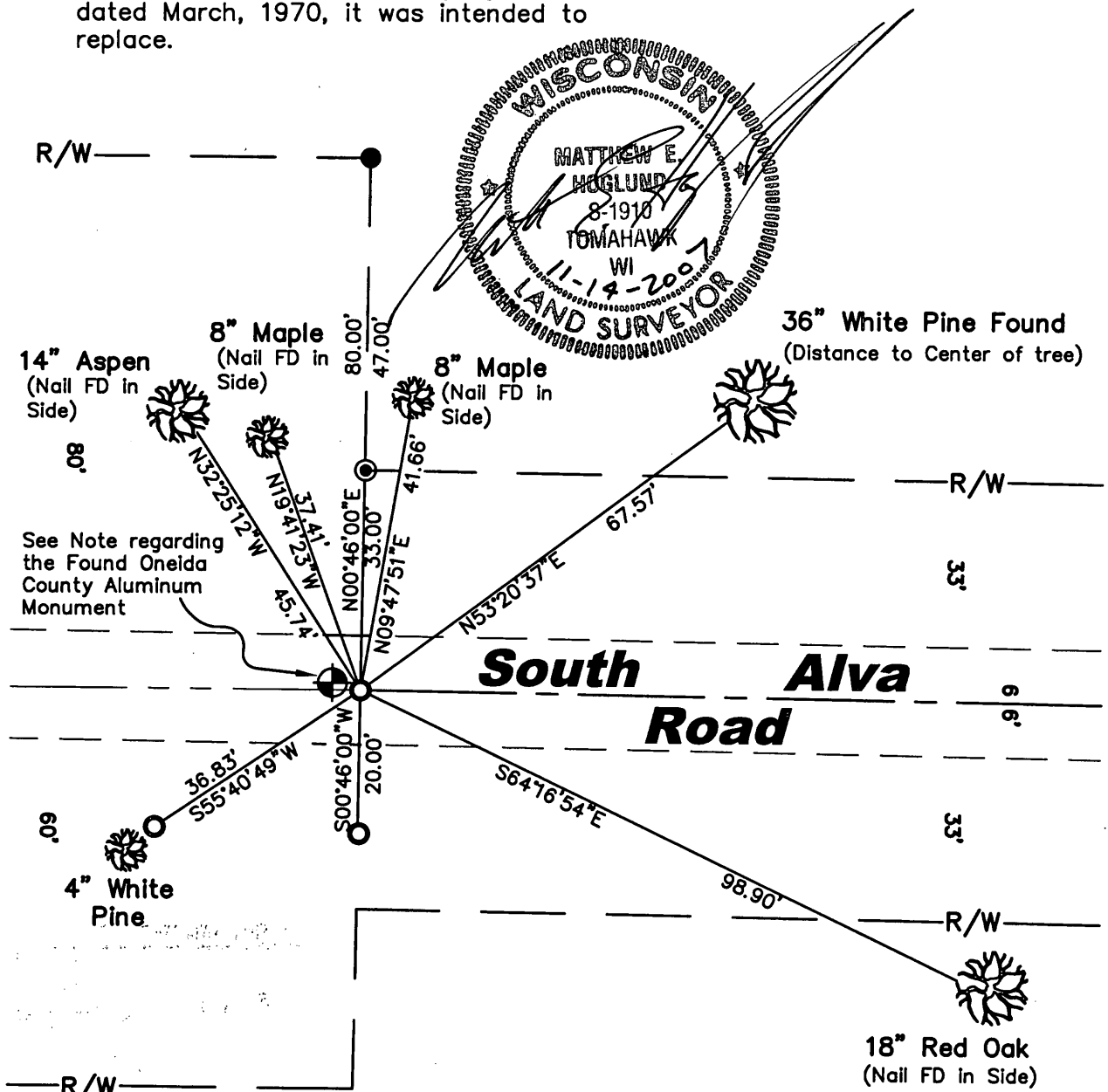
(c)(d)(e) Plan view of corner with ties to at least 4 witness monuments. If in disagreement with previously established corner, show the distances between the two corners and also indicate the ties to the disputed corner.

## Note

The Oneida County Aluminum Monument was found N79°31'09"W, 1.16' from the South 1/4 Corner. The found Monument does not match the location of the previous corner (1-1/2" iron pipe) shown on Certified Survey Maps 337 and 338 dated October 20, 1976 and Plat of Survey by John Fisher dated March, 1970, it was intended to replace.



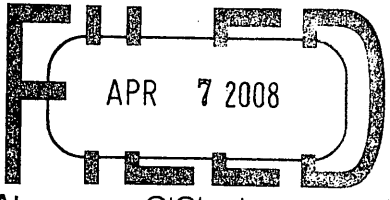
Scale: 1" = 25'



## LEGEND

- 3/4" x 24" Iron Rebar Set Weighing 1.50 lbs/lin ft.
- 1" Iron Pipe Found
- 3/4" Iron Rebar Found
- ⊕ 2-1/2" Capped Aluminum Mon. Found

REGISTER OF DEEDS OFFICE  
ONEIDA COUNTY, WIS.



At \_\_\_\_\_ O'Clock \_\_\_\_\_ M  
**THOMAS H. LEIGHTON**  
REGISTER OF DEEDS

SHEET 2 OF 2

Index No. J-15

3707100020