

U.S. PUBLIC LAND SURVEY MONUMENT RECORD

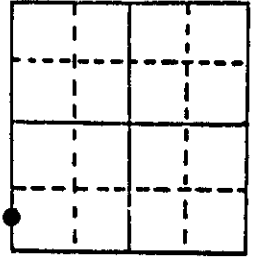
Note: This form is intended and designed to fulfill all requirements of Wisconsin Administrative Code, Chapter A-E 5.02, U.S. Public Land Survey Monument Record (3) (a) (b) (c) (d) (e) (f) (g) (h) (i). An additional sheet may be added if necessary to conform with said requirements.

(a) Corner location: Township 37 North

Range 7 East

Town of Lake Tomahawk

County Oneida



Section 11

*Meander Corner
south shore of
Alvo Lake.*

(b) (f) (g) (h) Description of monument found at this corner and if it was accepted, state all evidence (material, testimonial, occupational, plats, records, other monuments) used as a basis for accepting. If not accepted or if nothing was found, state evidence used as basis for establishing location. If reestablished through lost corner proportionate methods, indicate all monuments, distances and directions used to establish.

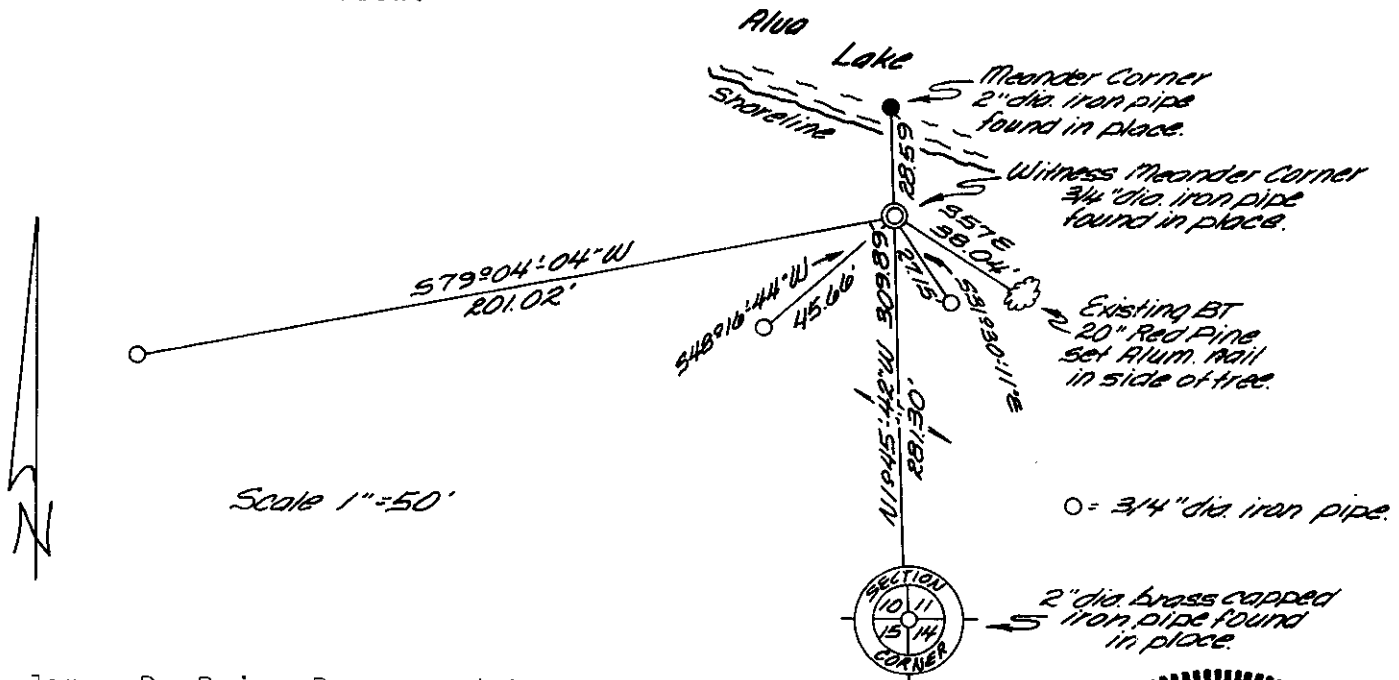
November 1862- Joseph H. Jenkins, Deputy Surveyor - Set meander post.

Original bearing trees: Birch 9" S19°W, 11 links

Birch 8" S71°E, 52 links

August 2nd, 1985- Found 2" dia. iron pipe found in lake 7 feet from shoreline edge. This monument has been accepted as marking the corner by previous surveys and is witnessed as shown on Oneida County Certified Survey Map No. 771 by Jerome N. Kraemer.

(c) (d) (e) Plan view of corner with ties to at least 4 witness monuments. If in disagreement with previously established corner, show the distances between the two corners and also indicate the ties to the disputed corner. Because the existing monument is in danger of being destroyed by ice action and erosion I reference a Witness meander corner as shown below.



(i) I, James D. Rein, Reg. Land Surveyor No. S-1234
(type or print name) certify that the corner location on this record was determined by me or under my direction and control and that this U.S. Public Land Survey Monument Record is correct and complete to the best of my knowledge and belief.

James D Rein
Signature

August 6th, 1985
Date



Index No. 6-17
H, J-17

3707100.300