

U. S. PUBLIC LAND SURVEY MONUMENT RECORD
PLS-11 (9/1/66)

REGISTER OF DEEDS OFFICE
 ONEIDA COUNTY, WIS.

FILED
 MAY 11 1982
 At 4:15 O'clock P.M.
 DORIS VERAGE KUEHN
 REGISTER OF DEEDS

CERTIFIED LAND CORNER RESTORATION

State of Wisconsin }
 County of ONEIDA } ss.

I, JEROME N. KRAEMER, do hereby certify that on the 13th day of August, 19 82, I found evidence of the North Meander, Alva Lake corner of Sections 10 and 11 Township 37 North, Range 7 East, Fourth Principal Meridian, as described hereon; and that from this evidence I established a new monument and accessories as described hereon to perpetuate the original location of this corner:

Description of original monument and accessories and subsequent restorations:

- | | | |
|---|---|--|
| Original corner established in November 1862 by Joseph H. Jenkins, Gov't. Deputy Surveyor | - | Meander corner, an iron pipe, was found in place and accepted by James G. Griffin, Registered Land Surveyor, and shown on map in Section 11, T37N, R7E dated 1965. |
| Yellow Pine 8 N13°W 65 links | - | |
| Yellow Pine 7 N65°E 70 links | - | |

Compared with all record data & accepted as correct.

Robert H. Kinick
 Oneida County Surveyor 27 Apr 1983

Description of corner evidence found:

Beach area along north shore of Alva Lake has been cleared and graded as reported by local residents. Due to the low contour along north shore, approximately 40 to 70 feet of shoreline has been turned into lakebed. No existing monumentation of Meander Corner was found.

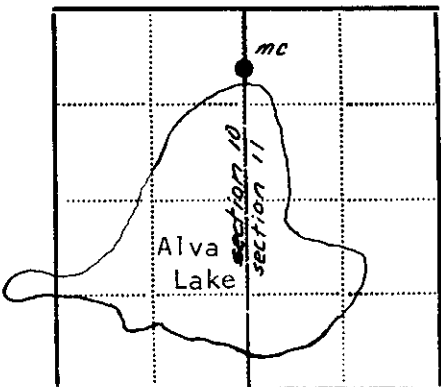
Set witness corner to Meander Corner by calculating the position of Meander Corner from information on survey map by James G. Griffin dated 1965.

Description of monument and accessories I established to perpetuate the location of this corner:

August 13, 1982
 Set 2" diameter aluminum pipe, 30 inches long, clover shaped bottom, Berntsen Model A-1 standard monument protruding 3 inches above ground level with a 3-1/4" diameter cast aluminum cap stamped:
 WIT.COR. T37N R7E S10 S11 8-13-82 S-1448.

Set R.R. spike in following unfaced trees:
 Balsam 9" N17°W, 55.32 feet
 Balsam 12" N32°W 83.11 feet
 Pine, Norway 9" N64°E, 110.80 feet

Witness corner lies 12 feet north of lake on this date.



● - Corner monument restored
 □ -

Resident witnesses Anita Kogut

Dated at Minocqua Wisconsin, this 10 day of December, 19 82.

Signature Jerome N. Kraemer Title Registered Land Surveyor
 (County Surveyor, Registered Land Surveyor, or other duly authorized official)

Surveyors Registration No. S-1448

Office of _____ County of _____

I hereby certify that the within instrument was filed in this office for record on the _____ day of _____ 19____, and was filed in Book No. _____ Page No. _____ of County Records.

Signature _____ Title _____

Township 37N, Range 7 East, Section _____, Index No. _____, Page No. _____

3707103300

3, 6-17

U.S. PUBLIC LAND SURVEY MONUMENT RECORD

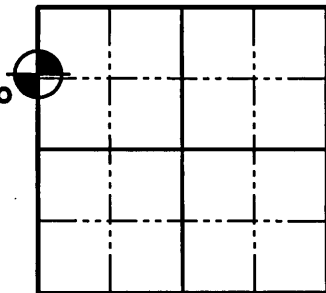
NOTE: This form is intended and designed to fulfill all requirements of Wisconsin Administrative Code, Chapter A-E 7 .08 U.S. Public Land Survey Monument Record (3)(a)(b)(c)(d)(e)(f)(g)(h)(i). An additional sheet may be added if necessary to conform with said requirements.

(a) Corner location: Township 37 North
 Range 7 East

Town of Lake Tomahawk

County of Oneida

Witness to
 Meander
 Corner



Section 11



(b)(f)(g)(h) Description of monument found at this corner and if it was accepted, state all evidence (material, testimonial, occupation, plats, records, other monuments) used as a basis for accepting. If not accepted or if nothing was found, state evidence used as a basis for establishing location. If reestablished through lost corner proportionate methods, indicate all monuments, distances and directions used to establish. Indicate type of monument found or set and sign post.

November 1862 – Joseph H. Jenkins set Meander post 58.60 North of Southwest corner of section and BT's: 7" Yellow Pine, N65°E 70 links.; 8" Yellow Pine, N13°W 65 links.

October 1, 1936 – Maine fell 1.33 West of Original Government M.C. on North side of Lake Alva. He found both original B.T. stumps. He set oak stake, rocks around stake and marked new BT's: 12" N.P. rampike 12", N43°E, 0.43 chains; W.P. stump 4", N4°E, 0.445 chains. (Maine Book 1, Page 119)

September 1965 – James G. Griffin shows a monument in place at the Meander Corner per Plat of Survey with an Oneida County Map Number of B7006.

April 26, 1966 – Joseph C. Kirby shows a monument in place at the Meander Corner per Plat of Survey with an Oneida County Map Number of B1378.

August 13, 1982 – Jerome N. Kraemer set a Witness Corner to the Meander Corner by calculating the position of the Meander Corner from information on the survey map by James G. Griffin dated 1965. The beach area along the North shore of Alva Lake has been cleared and graded as reported by local residents. Due to the low contour along the North shore, approximately 40 to 70 feet of shoreline has been turned into lakebed. No existing monumentation of the Meander Corner was found. He set a 2" diameter aluminum pipe, 30 inches long, clover shaped bottom, Berntsen Model A-1 standard monument protruding 3 inches above ground level with a 3-1/4" diameter cast aluminum cap stamped: WIT. COR. T37N R7E S10 S11 8-13-82 S-1448. He also set a railroad spike in the following unfaced trees: 9" Balsam, N17°W, 55.32'; 12" Balsam, N32°W, 83.11'; 9" Norway Pine, N64°E, 110.80'. He also noted that the corner lies 12 feet north of the lake. (See Oneida County Map Number B163)

July 9, 2008 – Jonathan W. Dulin found and accepted an Oneida County aluminum monument set by Jerome N. Kraemer in 1982 as a Witness Corner to the Meander Corner. We found 2 of the BT's with the railroad spike overgrown in the tree. We set new witness corners as shown on sheet 2 hereof.

(c)(d)(e) Plan view of corner with ties to at least 4 witness monuments. If in disagreement with previously established corner, show the distances between the two corners and also indicate the ties to the disputed corner.

See Sheet 2 hereof.

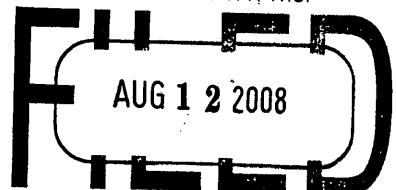
(i) I, Jonathan W. Dulin, certify that the corner location on this record was determined by me under my direction and control and that this U.S. Public Land Survey Monument is correct and complete to the best of my knowledge and belief.


 Signature



7/15/08
 Date

REGISTER OF DEEDS OFFICE
 ONEIDA COUNTY, WIS.



At _____ O'Clock _____ M
 THOMAS H. LEIGHTON
 REGISTER OF DEEDS

Sheet 1 of 2

3707103300

Index No. E, F -17

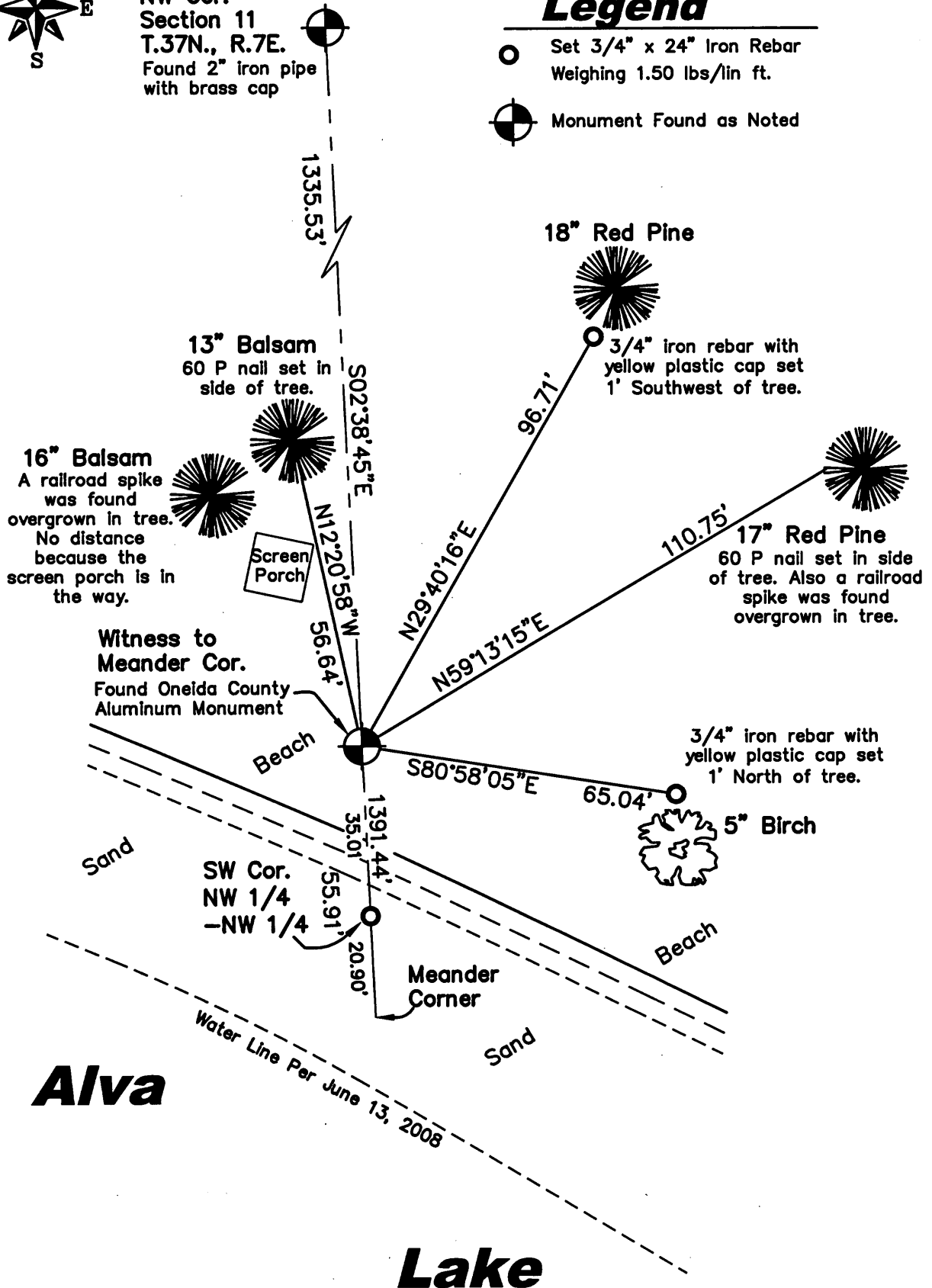
U.S. PUBLIC LAND SURVEY MONUMENT RECORD



NW Cor.
Section 11
T.37N., R.7E.
Found 2" iron pipe
with brass cap

Legend

- Set 3/4" x 24" Iron Rebar Weighing 1.50 lbs/lin ft.
- Monument Found as Noted



Alva

Lake

