

JUN 12 2023

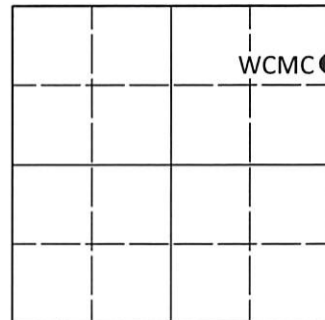
KYLE J. FRANSON
REGISTER OF DEEDS

U.S. PUBLIC LAND SURVEY MONUMENT RECORD

Note: This form is intended and designed to fulfill all requirements of Wisconsin Administrative Code, Chapter A-E 7.08 U.S. Public Land Survey Monument Record (3)(a-i).

(a) CORNER LOCATION
Wit. Meander Cor. of Secs. 10 & 11
Township 37 North
Range 7 East of the 4th P.M.
Town of Cassian and Lake Tomahawk
County of Oneida

WISCORS - Oneida County
N: 192,528.87 USft
E: 218,404.02 USft
Datum: NAD 83(2011) ep. 2010.00
GNSS Method: RTN - Direct
GNSS Control: WISCORS VRS



Sec. 10, T. 37 N., R. 7 E.

(b)(f)(g)(h) Description of monument found at this corner and if it was accepted, state all evidence (material, testimonial, occupational, plats, records, other monuments) used as a basis for accepting. If not accepted or if nothing was found, state evidence used as basis for establishing location. If re-established through lost corner proportionate methods, indicate all monuments, distances and directions used to establish. Indicate type of monument and sign post found or set.

This record is a perpetuation of the following land corner document(s):

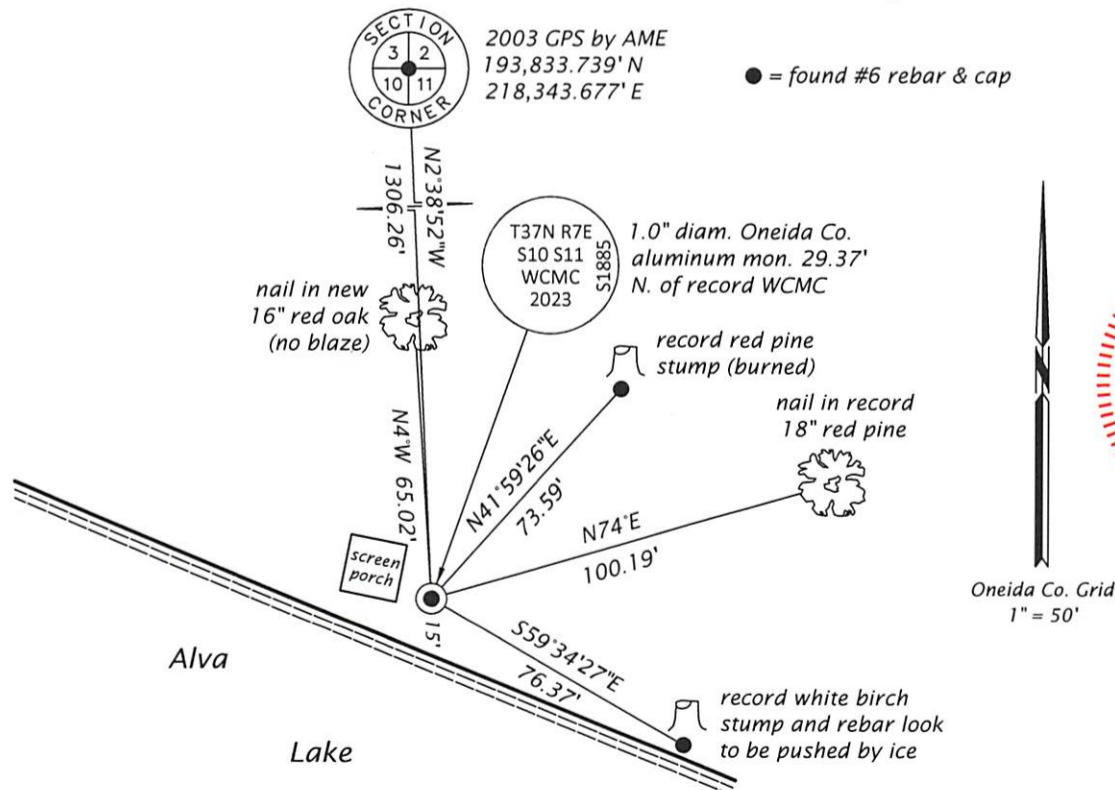
- December 10, 1982: USPLS Monument Record by Jerome N. Kraemer, filed in Oneida County
- July 15, 2008: USPLS Monument Record by Jonathan W. Dulin, filed in Oneida County

A complete history of the corner can be found on the previous land corner document(s). I accept the record activity as a true and faithful perpetuation or reestablishment of the original corner location and further perpetuate it as described below.

May 10, 2023: I found the record monument, a 2.4" diam. Oneida Co. aluminum monument, lying flat on the beach. It's clear the water is considerably higher than in 2008 and the record witness corner location is now underwater. The record fir bearing trees have been cut. I established the section line using the record reference monument at the burned pine stump as detailed below. The resulting section line bearing checks the record well. As shown below, I set a new WCMC 29.37 feet North of the record location. At the corner point, I set a 1.0" diam., 30" long aluminum pipe with a 2.5" diam. Oneida Co. aluminum cap flush with the ground surface. I found or established accessories as indicated below. Due to the beach location of the corner, no sign post was set.

The coordinate value shown is the weighted mean of two or more GNSS observations at markedly different times satisfying the accuracy requirements defined and qualified in the 2022 Oneida County Fee Schedule for USPLS Corners.

(c)(d)(e) Plan view of corner with ties to at least 4 witness monuments. If in disagreement with previously established corner, show the distances between the two corners and also indicate the ties to the disputed.



(i) I, Jeffrey W. Austin, Professional Land Surveyor No. S-1885, hereby certify that the corner location on this record was determined by me or under my direction and control and that this U.S. Public Land Survey Monument Record is correct and complete to the best of my knowledge and belief.

[Handwritten Signature]
Signature

JUNE 1, 2023
Date