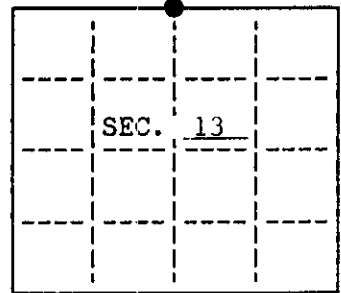


U. S. PUBLIC LAND SURVEY MONUMENT RECORD

Note: This form is intended and designed to fulfill all requirements of Wisconsin Administrative Code, Chapter A-E 7.08 U.S. Public Land Survey Monument Record (3)(a)(b)(c)(d)(e)(f)(g)(h)(i). An additional sheet may be added if necessary to conform with said requirements.

(a) CORNER LOCATION: State Plane Coordinates
N $\frac{1}{4}$ corner of Sec. 13 X _____
 Township 37 North Y _____
 Range 7 East Datum Base _____
 Town/~~XXX~~ Cassian County of Oneida

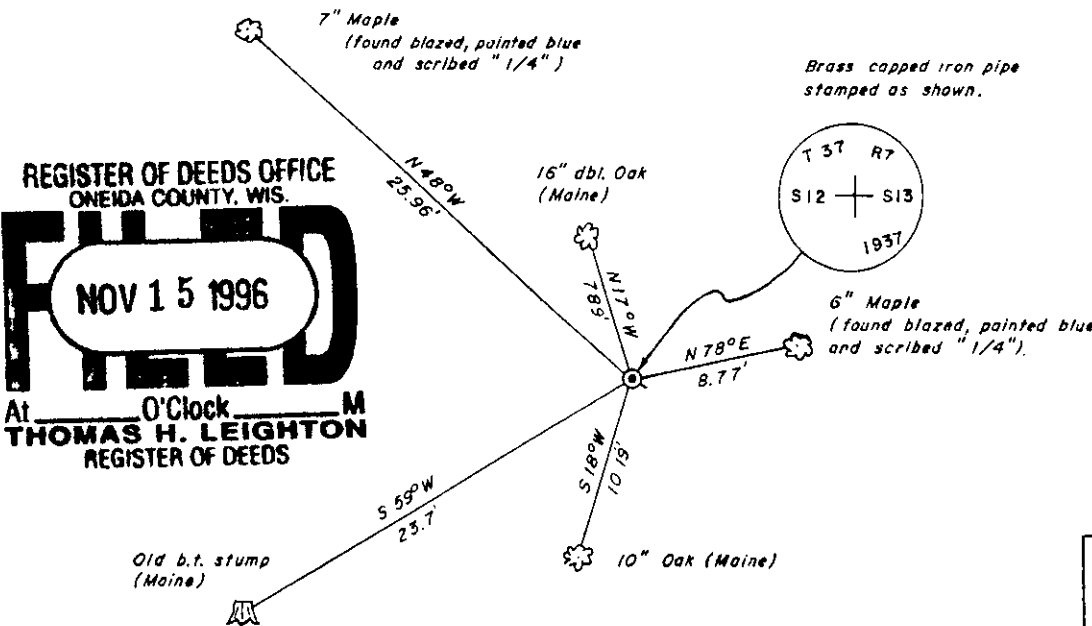


(b) HISTORY OF ORIGINAL CORNER ESTABLISHMENT
 Original Surveyor: Joseph Jenkins Original B.T.'S
 Date of Survey: Commenced November, 1862 Maple 6" N27 E, 10 lks
 Completed November, 1862 Y. Pine 10" S22 E, 14 lks

(b)(f)(g)(h) Description of monument found at this corner and if it was accepted, state all evidence (material, testimonial, occupational, plats, records, other monuments) used as a basis for accepting. If not accepted or if nothing was found, state evidence used as basis for establishing location. If reestablished through lost corner proportionate methods, indicate all monuments, distances and directions used to establish. Indicate type of monument and sign post found or set.

1936 - Maine found the original Government $\frac{1}{4}$ stake lying on the ground and the stub of an original bearing tree (Y. Pine). He reset corner with an iron pipe and stamped brass cap. He tied four new bearing trees: 10" Blk. Oak N17 W, .11 $\frac{1}{2}$ (7.59'); 8" Blk Oak S59 W, .36 (23.8'); 4" Blk. Oak S17 W, .14- $\frac{3}{4}$ (9.74'); 4" Blk Oak S62 E, .26 $\frac{1}{2}$ (17.49').
 1996 - I found Maine's Brass capped monument and two of his bearing trees, (the 8" Blk. Oak, S59 W, .36 is now a cut-off stump). I also found and tied two other blazed, scribed and blue painted bearing trees.

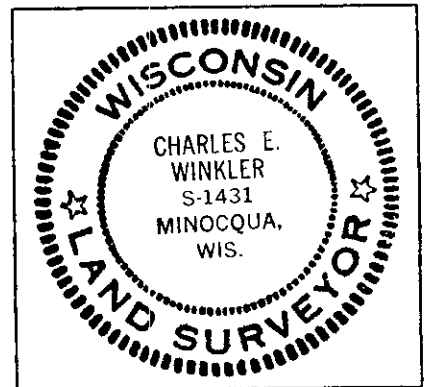
(c)(d)(e) Plan view of corner with ties to at least 4 witness monuments. If in disagreement with previously established corner, show the distances between the two corners and also indicate the ties to the disputed.



Set white plastic sign post to mark corner and P.K. nails in the side of each B.T.

1/4 cor. is S0°20'24"E, 2601.44' to C1/4, sec.13.

REGISTER OF DEEDS OFFICE
 ONEIDA COUNTY, WIS.
FILED
 NOV 15 1996
 At O'Clock
THOMAS H. LEIGHTON
 REGISTER OF DEEDS



INDEX NO. 5-23

(i) I, Charles E. Winkler S-1431 hereby certify that the corner location on this record was determined by me or under my direction and control and that this U.S. Public Land Survey Monument Record is correct and complete to the best of my knowledge and belief.

Charles E. Winkler 10/29/96
 Signature Foltz & Assoc., Inc. Date

3707010020