

CERTIFIED LAND CORNER RESTORATION

State of Wisconsin }
County of Oneida } ss.

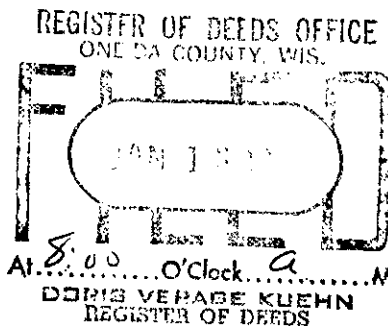
I Dennis L. Stella, do hereby certify that on the 15th day of May, 1978, I found evidence of the NW MC Govt Lot 1 corner of Sec. 24 Township 37N, Range 7E, Fourth Principal Meridian, as described hereon; and that from this evidence I established a new monument and accessories as described hereon to perpetuate the original location of this corner:

Description of original monument and accessories and subsequent restorations:

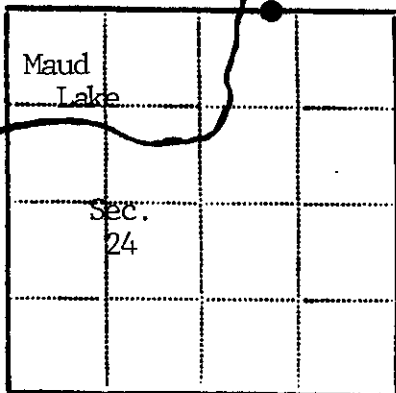
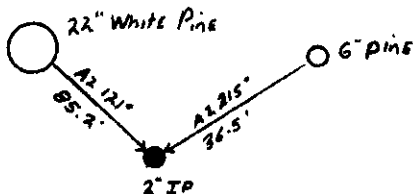
Corner: Set wood post
Bearing Trees: Tamarack 6", S51°E, 32 Lks
Tamarack 6", N57°W, 13 Lks

Description of corner evidence found:

Found DNR wood post set in 1930.



Description of monument and accessories I established to perpetuate the location of this corner:



● - Corner monument restored
□ -

Resident witnesses.....

Dated at Rhineland Wisconsin, this 16 day of October 1979..

Signature Dennis L. Stella Title RLS 1352
(County Surveyor, Registered Land Surveyor, or other duly authorized official)

Surveyors Registration No. 1352

Office of..... County of.....

I hereby certify that the within instrument was filed in this office for record on the.....day of.....19....., and was filed in Book No.....Page No.....of County Records.

Signature..... Title.....

Township....., Range....., Section....., Index No....., Page No.....

3707130018

CERTIFIED LAND CORNER RESTORATION

State of Wisconsin }
County of Oneida } ss.

I David F. Mc Mullen, do hereby certify that on the 17 day of September 19 81 I found evidence of the meander corner E. of Maud L. corner of on the S. line of Sec. 13 Township 37 North, Range 7 East, Fourth Principal Meridian, as described hereon; and that from this evidence I established a new monument and accessories as described hereon to perpetuate the original location of this corner:

Description of original monument and accessories and subsequent restorations:

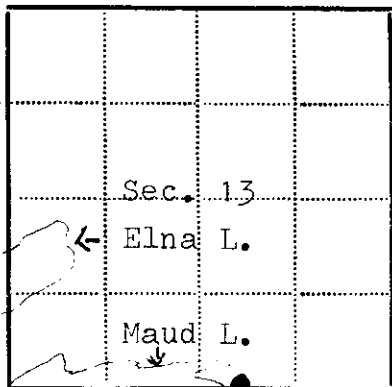
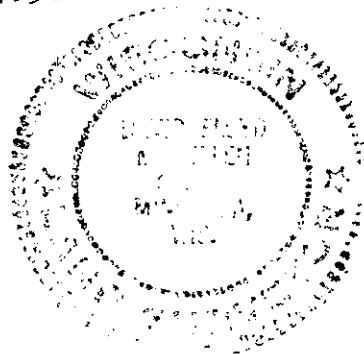
Wood post set (November 1862 - Jos. H. Jenkins)
Bearing trees: 6" Tamarack; S51°E, 32lks
6" Tamarack; N57°W, 13lks
June 12, 1936 - V. M. Maine
New Oak stake set
Bearing tree: 12" Yellow Pine; N56°W, 1.29½ch

Description of corner evidence found:

1½" Iron pipe and Wood post w/metal tag
Bearing tree: 18" Norway Pine; N51°W, 85.0'

Description of monument and accessories I established to perpetuate the location of this corner:

Set Oneida County aluminum cast Berntsen monument
Made bearing trees: 5" White Pine; N20°W, 78.40'
5" Tamarack; N61°E, 37.40'
4" Tamarack; S71°E, 44.50'



● - Corner monument restored
□ -

Resident witnesses.....

Dated at Minneapolis Wisconsin, this 11 day of Jan 1982.

Signature David F. Mc Mullen Title Registered Land Surveyor
(County Surveyor, Registered Land Surveyor, or other duly authorized official)

Surveyors Registration No. S - 1340

Office of REGISTER OF DEEDS County of Oneida

I hereby certify that the within instrument was filed in this office for record on the 17th day of September 1982, and was filed in Book No. _____ Page No. _____ of County Records.

Signature Toria Verage Kuehn Title REGISTER OF DEEDS

Township 37 North, Range 7 East, Section 13, Index No. _____, Page No. _____

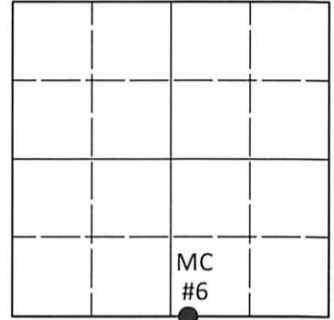
N. 23

U.S. PUBLIC LAND SURVEY MONUMENT RECORD

Note: This form is intended and designed to fulfill all requirements of Wisconsin Administrative Code, Chapter A-E 7.08 U.S. Public Land Survey Monument Record (3)(a-i).

(a) CORNER LOCATION
 Meander Cor. of Secs. 13 & 24
 Township 37 North
 Range 7 East of the 4th P.M.
 Town of Cassian
 County of Oneida

WISCRS - Oneida County
 N: 183,224.92 USft
 E: 226,543.88 USft
 Datum: NAD 83(2011) ep. 2010.00
 GNSS Method: RTN - Direct
 GNSS Control: WISCRS VRS



Sec. 13, T. 37 N., R. 7 E.

(b)(f)(g)(h) Description of monument found at this corner and if it was accepted, state all evidence (material, testimonial, occupational, plats, records, other monuments) used as a basis for accepting. If not accepted or if nothing was found, state evidence used as basis for establishing location. If re-established through lost corner proportionate methods, indicate all monuments, distances and directions used to establish. Indicate type of monument and sign post found or set.

This record is a perpetuation of the following land corner document(s):

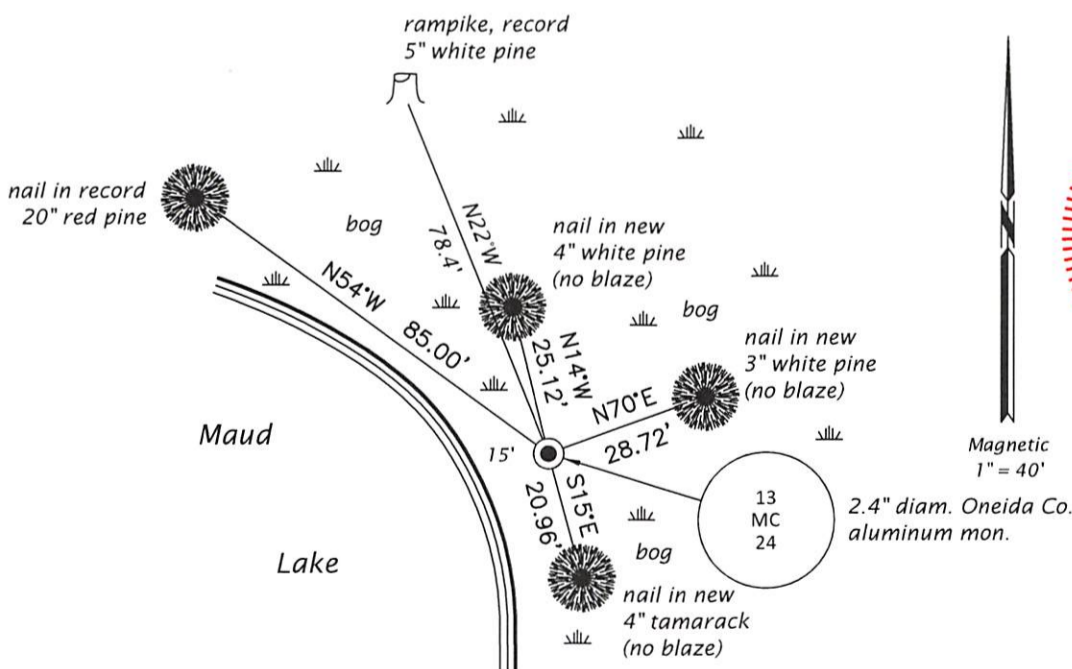
- Oct. 16, 1979: Certified Land Corner Restoration by Dennis L. Stella, filed in Oneida County*
- Jan. 11, 1982: Certified Land Corner Restoration by David F. McMullen, filed in Oneida County*

A complete history of the corner can be found on the previous land corner document(s). I accept the record activity as a true and faithful perpetuation or reestablishment of the original corner location and further perpetuate it as described below.

Feb. 16, 2022: I found and accepted the record monument, a 2.4" diam. aluminum pipe, loosely set, with a 3.3" diam. Oneida Co. aluminum cap flush with the bog surface. I found the record bearing trees at S71°E and N61°E broken and down. I found or established accessories as indicated below. I found a wood post with aluminum tag bearing Northeast, 1.0 ft.

The coordinate value shown has been verified by averaging two or more GNSS observations at markedly different times.

(c)(d)(e) Plan view of corner with ties to at least 4 witness monuments. If in disagreement with previously established corner, show the distances between the two corners and also indicate the ties to the disputed.



REGISTER OF DEEDS OFFICE
 ONEIDA COUNTY
 FILED

MAR 07 2022

KYLE J. FRANSON
 REGISTER OF DEEDS

(i) I, Jeffrey W. Austin, Professional Land Surveyor No. S-1885, hereby certify that the corner location on this record was determined by me or under my direction and control and that this U.S. Public Land Survey Monument Record is correct and complete to the best of my knowledge and belief.

[Handwritten Signature]
 Signature

FEB. 22, 2022
 Date