

U.S. PUBLIC LAND SURVEY MONUMENT RECORD

Note: This form is intended and designed to fulfill all requirements of the Wisconsin Administrative Code, Chapter A-E 7.08 U.S. Public Land Monument Record (3)(a)(b)(c)(d)(e)(f)(g)(h)(i). An additional sheet may be added if necessary to conform with said requirements.

(a) CORNER LOCATION:
 M. C. south line of Section 14
 Township 37 North
 Range 7 East
 Town of Cassian
 County of Oneida

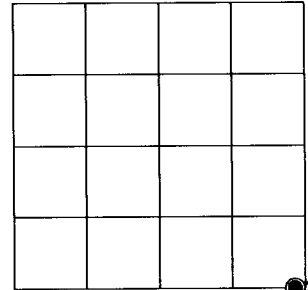
WISCORS - Oneida County
 North: 183214.848 USft
 East: 223451.265 USft
 Latitude: 45°41'18.70972" N
 Longitude: 89°34'12.24148" W
 Datum: NAD 83(2011)
 GNSS Method: RTK - Direct
 GNSS Control: WISCORS VRS
 Record North: 183214.914 USft
 Record East: 223451.261 USft
 GNSS Method: NAD 83(1991)

RECORDING AREA
 ONEIDA COUNTY

MAY 25 2017

AT _____ O'CLOCK _____ M
 KYLE J. FRANSON
 REGISTER OF DEEDS
 (RECORDING AREA)

SECTION 14



(b) HISTORY OF ORIGINAL CORNER ESTABLISHMENT

Original Surveyor: Joseph H. Jenkins
 Date of Survey: Commenced November 3rd, 1862
 Completed November 15th, 1862
 Original B.T.'S: White Pine 8" N 67°W 55 lks.
 Birch 8" S 72°W 63 lks.

(f)(g)(h) DESCRIPTION OF MONUMENT FOUND AT THIS CORNER AND IF IT WAS ACCEPTED, STATE ALL EVIDENCE (MATERIAL, TESTIMONIAL, OCCUPATIONAL, PLATS, RECORDS, OTHER MONUMENTS) USED AS A BASIS FOR ESTABLISHING LOCATION. IF NOT ACCEPTED OR IF NOTHING WAS FOUND, STATE EVIDENCE USED AS BASIS FOR ESTABLISHING LOCATION. IF REESTABLISHED THROUGH LOST CORNER PROPORTIONATE METHODS, INDICATE ALL MONUMENTS, DISTANCES AND DIRECTIONS USED TO ESTABLISH. INDICATE TYPE OF MONUMENT AND SIGN POST FOUND OR SET.

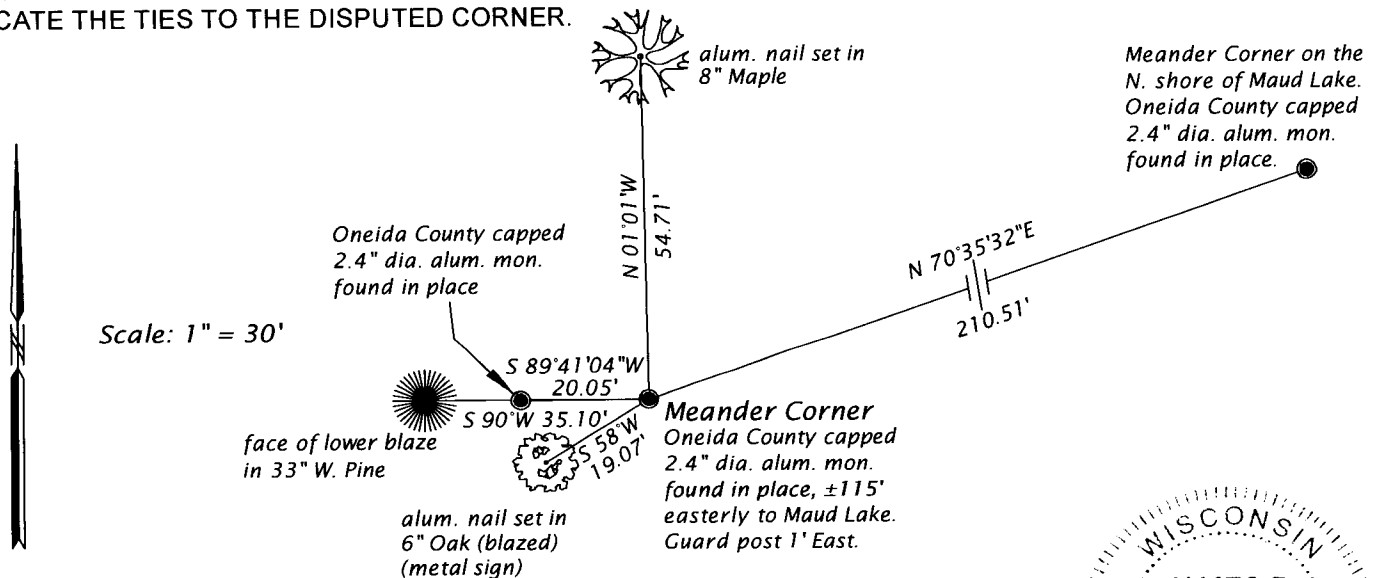
June 15, 1936 - V. M. Maine, County Surveyor, (Maine Book 1, pages 124 - 127) Found no evidence of original corner, thus set M. C. on west side of Maud Lake on line between recovered original corners and marked BT's: W.P. 14", N 42°W, 0.48 ch. and W.P. 12", West, 0.547 ch.

February 14, 1997 - Stuart L. Foltz, RLS No. 1170, map of survey filed as B3598 identifies corner as "Oneida County alum. mon. set (Maine 1936) and an erroneous alum. mon.: S89°47'W, 20.10 feet. Note: Foltz field notes dated 4-23-96 show an ODAMS (swamp mon.) was set from Maine's bt. a 24" W. Pine, N 87°W, 35.64 feet; McMullen's bt. 9" Maple S 51°W, 28.81 feet; new bt. 15" W. Pine, N 24°E, 52.53 feet.

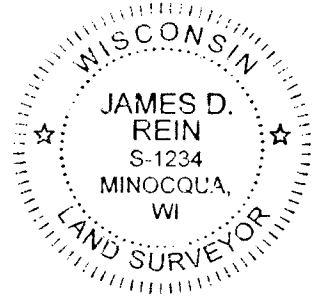
March 13, 2017 - James D. Rein, Professional Land Surveyor No. 1234, recovered Oneida County capped 2.4" dia. alum. monument, referenced by Maine's W. Pine bt. now 33" diameter tree. I do not accept the erroneous aluminum as marking the meander corner. We made new reference ties as shown in the plan view.

The coordinate value shown has been verified by at least one of the following methods: 1) comparison to a previously GPS determined published value; 2) the value is the average of two or more GPS observations at a markedly different time; 3) one or more distances were measured back to the GPS observed corner from temporary GPS observed offset locations.

(c)(d)(e) PLAN VIEW OF CORNER WITH TIES TO AT LEAST 4 WITNESS MONUMENTS. IF IN DISAGREEMENT WITH PREVIOUSLY ESTABLISHED CORNER, SHOW THE DISTANCE BETWEEN THE TWO CORNERS AND ALSO INDICATE THE TIES TO THE DISPUTED CORNER.



(i) I, JAMES D. REIN, PROFESSIONAL LAND SURVEYOR NO. S-1234 HEREBY CERTIFY THAT THE CORNER LOCATION ON THIS RECORD WAS DETERMINED BY ME OR UNDER MY DIRECTION AND CONTROL AND THAT THIS U.S. PUBLIC LAND SURVEY MONUMENT RECORD IS CORRECT AND COMPLETE TO THE BEST OF MY KNOWLEDGE AND BELIEF



[Signature]
 SIGNATURE
 5-12-17
 DATE

INDEX NO. N - 20-21
 3707140002