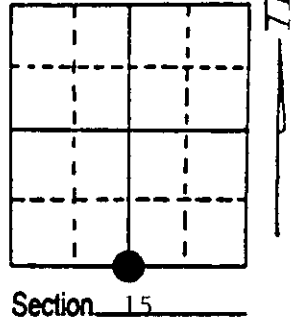


U.S. PUBLIC LAND SURVEY MONUMENT RECORD

Note: This form is intended and designed to fulfill all requirements of Wisconsin Administrative Code, Chapter A-E 7.08 U.S. Public Land Survey Monument Record (3) (a) (b) (c) (d) (e) (f) (g) (h) (i). An additional sheet may be added if necessary to conform with said requirements.

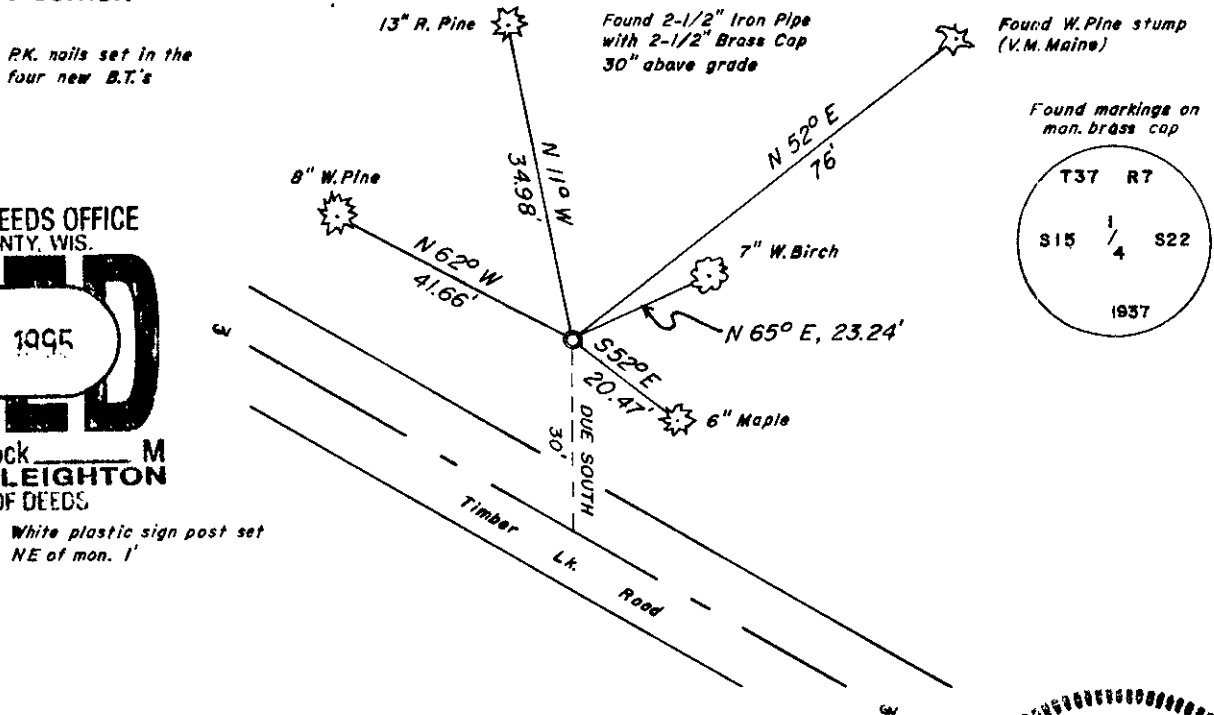
(a) Corner location: Township 37 North
 Range 7 East/West
 Town/City/Village Cassian
 County Oneida



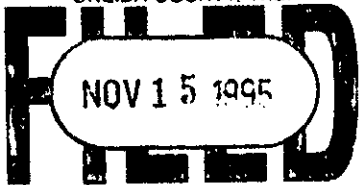
(b) (f) (g) (h) Description of monument found at this corner and if it was accepted, state all evidence (material, testimonial, occupational, plats, records, other monuments) used as a basis for accepting. If not accepted or if nothing was found, state evidence used as basis for establishing location. If reestablished through lost corner proportionate methods, indicate all monuments, distances and directions used to establish. Indicate type of monument found or set and sign post.

Nov., 1869: Original surveyor, J. H. Jenkins set $\frac{1}{4}$ post and made following BT's:
 9" Aspen, S34°E, 7 lks
 10" Aspen, N32°E, 20 lks
 June, 1936: V.M. Maine did not find $\frac{1}{4}$ corner. He single proportioned it's position and reset corner with 2½" iron pipe and brass cap and made following BT's:
 18" White Pine stump N74°W, 1.14 chains
 15" White Pine stump N48°E, 1.14½ chains (75.57')
 Sept., 1995: I found Maine's pipe and accepted it's position as being correct. I also found one of his stump BT's, made four additional BT's and set a plastic sign post.
 See sketch below for new BT's.

(c) (d) (e) Plan view of corner with ties to at least 4 witness monuments. If in disagreement with previously established corner, show the distances between the two corners and also indicate the ties to the disputed corner.



REGISTER OF DEEDS OFFICE
 ONEIDA COUNTY, WIS.

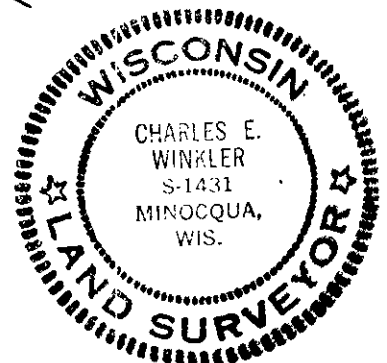


At O'Clock M
 THOMAS H. LEIGHTON
 REGISTER OF DEEDS

White plastic sign post set
 NE of mon. 1'

(i) I, Charles E. Winkler S-1431
 (type or print name) certify that the corner location on this record was determined by me or under my direction and control and that this U.S. Public Land Survey Monument Record is correct and complete to the best of my knowledge and belief.

Charles E. Winkler 10-25-95
 Signature Foltz and Associates, Inc. Date



Index No. N-15

Stamp
 3707150020