

# U.S. PUBLIC LAND SURVEY MONUMENT RECORD

Note: This form is intended and designed to fulfill all requirements of the Wisconsin Administrative Code, Chapter A-E 7.08 U.S. Public Land Monument Record (3)(a)(b)(c)(d)(e)(f)(g)(h)(i). An additional sheet may be added if necessary to conform with said requirements.

REGISTER OF DEEDS OFFICE  
ONEIDA COUNTY  
FILED

JUN 01 2017

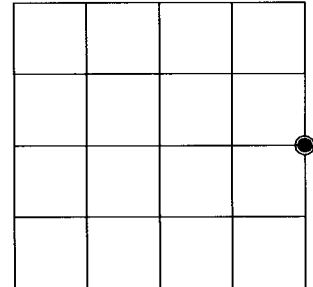
AT \_\_\_\_\_ O'CLOCK \_\_\_\_\_ M  
KYLE J. FRANSON  
REGISTER OF DEEDS

(a) CORNER LOCATION:  
East Quarter Corner of Section 15  
Township 37 North  
Range 7 East  
Town of Cassian  
County of Oneida

WISCRS - Oneida County  
North: 185847.842 USft  
East: 218342.692 USft  
Latitude: 45°41'44.67974" N  
Longitude: 89°35'24.21885" W  
Datum: NAD 83(2011)  
GNSS Method: RTK - Direct  
GNSS Control: WISCORS VRS  
Record North: 185847.884 USft  
Record East: 218342.674 USft  
GNSS Method: NAD 83(1991)

(RECORDING AREA)

SECTION 15



(b) HISTORY OF ORIGINAL CORNER ESTABLISHMENT

Original Surveyor: Joseph H. Jenkins  
Date of Survey: Commenced November 3rd, 1862  
Completed November 15th, 1862  
Original B.T.'S: White Pine 10" N 68°W 5 lks.  
Aspen 9" S 71°E 21 lks.

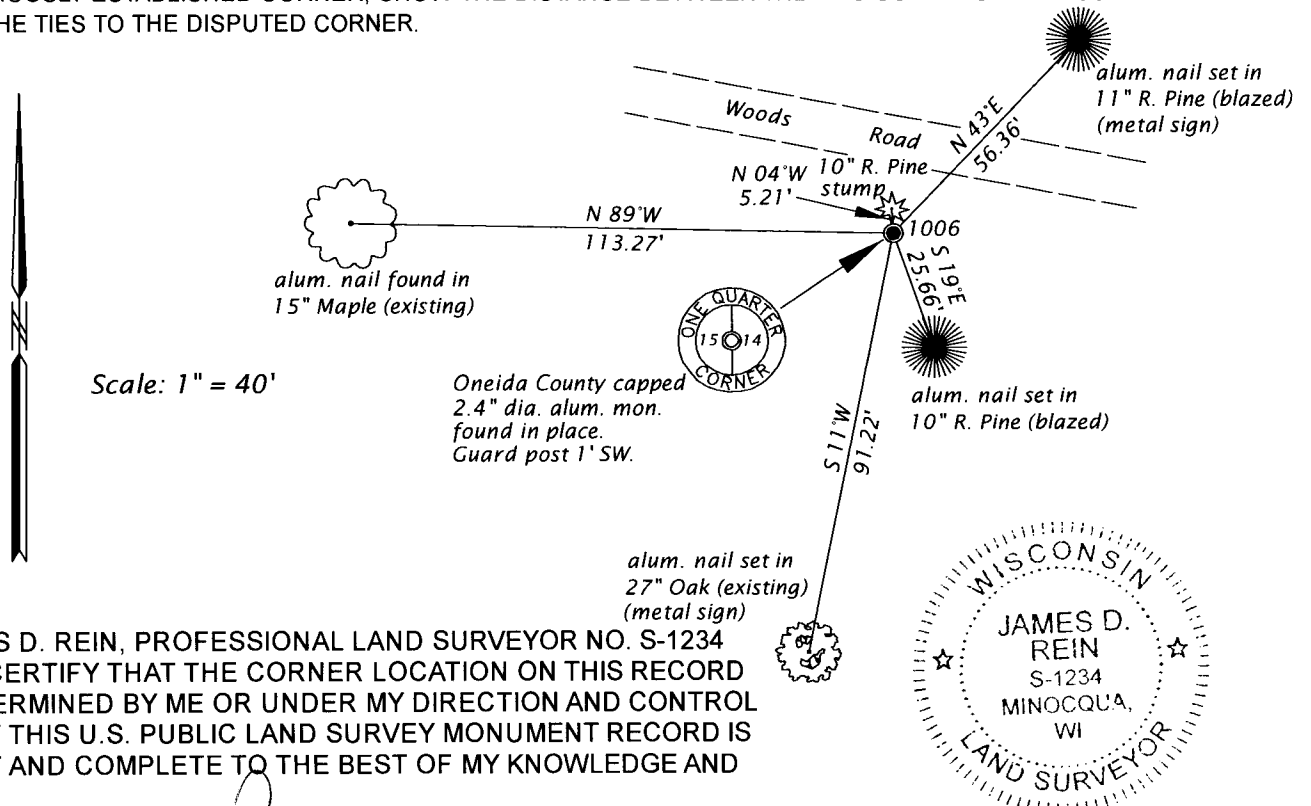
(f)(g)(h) DESCRIPTION OF MONUMENT FOUND AT THIS CORNER AND IF IT WAS ACCEPTED, STATE ALL EVIDENCE (MATERIAL, TESTIMONIAL, OCCUPATIONAL, PLATS, RECORDS, OTHER MONUMENTS) USED AS A BASIS FOR ESTABLISHING LOCATION. IF NOT ACCEPTED OR IF NOTHING WAS FOUND, STATE EVIDENCE USED AS BASIS FOR ESTABLISHING LOCATION. IF REESTABLISHED THROUGH LOST CORNER PROPORTIONATE METHODS, INDICATE ALL MONUMENTS, DISTANCES AND DIRECTIONS USED TO ESTABLISH. INDICATE TYPE OF MONUMENT AND SIGN POST FOUND OR SET.

October 28, 1975 - James D. Rein, RLS No. 1234, Wilderness Surveying, Inc., map of section subdivision survey #51S, filed as B891 in county surveyor's office, determined the corner lost, and repositioned it by single proportionate measurement between the recovered section corners. No monument was placed.

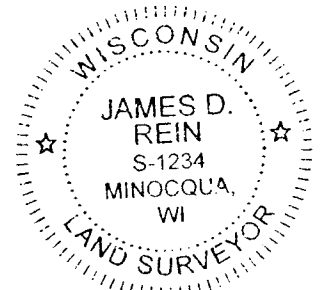
May 3, 1996 - James D. Rein, RLS No. 1234, Wilderness Surveying, Inc. Map No. 95-112, filed as B3477 in the county surveyor's office identifies this corner was monumented by a capped 2" dia. aluminum monument set at the single proportionate position shown on prior map #51S. The map references a U.S.P.L.S. Monument Record that was apparently not filed. The field notes for that survey show bt's were made as follows: 21" Oak, S 12°W, 91.10 feet; 12" Maple, N 88°W, 113.45 feet; 4" Red Pine, N 66°E, 28.22 feet; and 2" Red Pine, N 8°E, 5.28 feet. Set white poly post southwest of corner monument. (CONTINUED ON REVERSE PAGE)

The coordinate value shown has been verified by at least one of the following methods: 1) comparison to a previously GPS determined published value; 2) the value is the average of two or more GPS observations at a markedly different time; 3) one or more distances were measured back to the GPS observed corner from temporary GPS observed offset locations.

(c)(d)(e) PLAN VIEW OF CORNER WITH TIES TO AT LEAST 4 WITNESS MONUMENTS. IF IN DISAGREEMENT WITH PREVIOUSLY ESTABLISHED CORNER, SHOW THE DISTANCE BETWEEN THE TWO CORNERS AND ALSO INDICATE THE TIES TO THE DISPUTED CORNER.



(i) I, JAMES D. REIN, PROFESSIONAL LAND SURVEYOR NO. S-1234 HEREBY CERTIFY THAT THE CORNER LOCATION ON THIS RECORD WAS DETERMINED BY ME OR UNDER MY DIRECTION AND CONTROL AND THAT THIS U.S. PUBLIC LAND SURVEY MONUMENT RECORD IS CORRECT AND COMPLETE TO THE BEST OF MY KNOWLEDGE AND BELIEF.



*[Handwritten Signature]*  
SIGNATURE

5-12-17  
DATE

INDEX NO. L-17  
3707152000

---

(CONTINUED FROM REVERSE PAGE)

*March 13, 2017 - James D. Rein, PLS No. 1234, we recovered the capped 2.4" dia. aluminum monument as described above and retied two existing bearing trees, and made two new bearing trees as shown in the plan.*