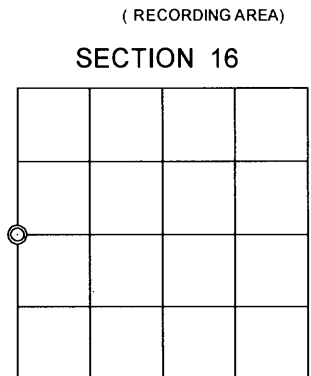


U.S. PUBLIC LAND SURVEY MONUMENT RECORD

Note: This form is intended and designed to fulfill all requirements of the Wisconsin Administrative Code, Chapter A-E 7.08 U.S. Public Land Monument Record (3)(a)(b)(c)(d)(e)(f)(g)(h)(i). An additional sheet may be added if necessary to conform with said requirements.

(a) CORNER LOCATION: ONEIDA COUNTY COORDINATES
 West Quarter Corner of Section 16 North: 185823.64'
 Township 37 North East: 207822.88'
 Range 7 East Control Station: OC # 270
 Town of Cassian Latitude: 45°40'52.40700"N
 County of Oneida Longitude: 89°37'13.88339"W
 Datum: NAD83 (91)
 Method: Offset RTK GPS



(b) HISTORY OF ORIGINAL CORNER ESTABLISHMENT

Original Surveyor: Joseph H. Jenkins
 Date of Survey: Commenced November 3, 1862
 Completed November 15, 1862
 Original B.T.'S Birch 9", S65°W, 20 lks.
 Birch 8", N27°E, 18 lks.

(f)(g)(h) DESCRIPTION OF MONUMENT FOUND AT THIS CORNER AND IF IT WAS ACCEPTED, STATE ALL EVIDENCE (MATERIAL, TESTIMONIAL, OCCUPATIONAL, PLATS, RECORDS, OTHER MONUMENTS) USED AS A BASIS FOR ESTABLISHING LOCATION. IF NOT ACCEPTED OF IF NOTHING WAS FOUND, STATE EVIDENCE USED AS BASIS FOR ESTABLISHING LOCATION. IF REESTABLISHED THROUGH LOST CORNER PROPORTIONATE METHODS, INDICATE ALL MONUMENTS, DISTANCES AND DIRECTIONS USED TO ESTABLISH. INDICATE TYPE OF MONUMENT AND SIGN POST FOUND OR SET.

See monument record dated 11/15/88 by Milo E. Stefan for corner history.

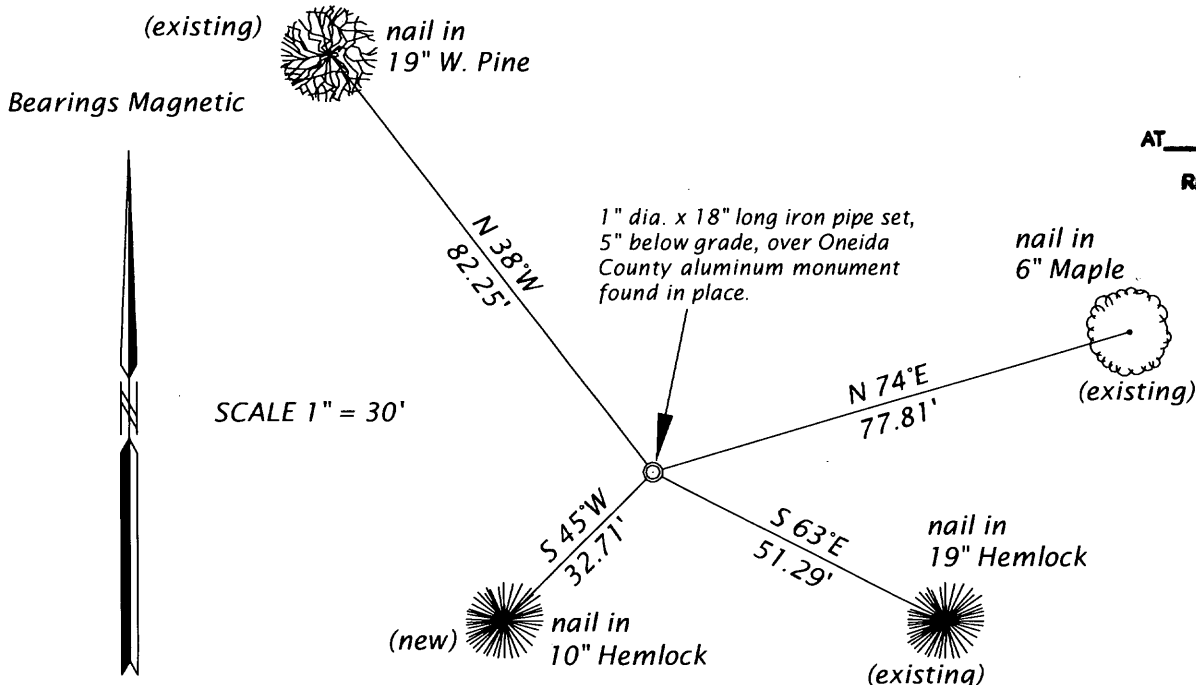
May 8, 2013 - James D. Rein, Registered Land Surveyor No. S-1234, found the Oneida County aluminum monument 23" below grade along with 3 of the previous bearing trees shown on Stefan's monument record. We set a 1.0" dia. x 18" long iron pipe, 5" below grade, above the monument found and made an additional B.T.

(c)(d)(e) PLAN VIEW OF CORNER WITH TIES TO AT LEAST 4 WITNESS MONUMENTS. IF IN DISAGREEMENT WITH PREVIOUSLY ESTABLISHED CORNER, SHOW THE DISTANCE BETWEEN THE TWO CORNERS AND ALSO INDICATE THE TIES TO THE DISPUTED CORNER.

REGISTER OF DEEDS OFFICE
 ONEIDA COUNTY
 FILED

MAR 31 2014

AT 0 O'CLOCK
 KYLE J. FRANSON
 REGISTER OF DEEDS



(i) I, JAMES D. REIN, PROFESSIONAL LAND SURVEYOR NO. S-1234 HEREBY CERTIFY THAT THE CORNER LOCATION ON THIS RECORD WAS DETERMINED BY ME OR UNDER MY DIRECTION AND CONTROL AND THAT THIS U.S. PUBLIC LAND SURVEY MONUMENT RECORD IS CORRECT AND COMPLETE TO THE BEST OF MY KNOWLEDGE AND BELIEF.



SIGNATURE [Handwritten Signature] DATE 6-25-13

3707172000

INDEX NO. L 9