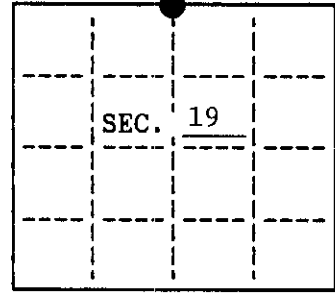


U.S. PUBLIC LAND SURVEY MONUMENT RECORD

Note: This form is intended and designed to fulfill all requirements of Wisconsin Administrative Code, Chapter A-E 7.08 U.S. Public Land Survey Monument Record (3)(a)(b)(c)(d)(e)(f)(g)(h)(i). An additional sheet may be added if necessary to conform with said requirements.

(a) CORNER LOCATION: State Plane Coordinates
 North 1/4 corner of Sec. 19 X _____
 Township 37 North Y _____
 Range 7 East Datum Base _____
 Town/City Cassian County of Oneida

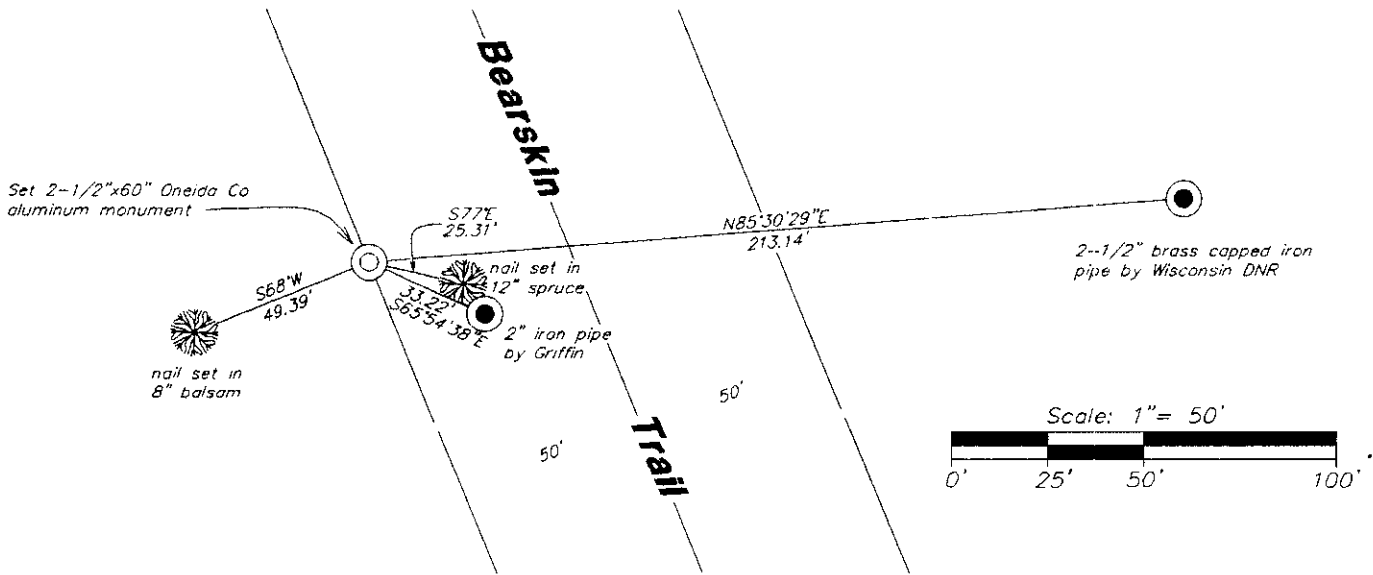


(b) HISTORY OF ORIGINAL CORNER ESTABLISHMENT Original B.T.'S
 Original Surveyor: SEE REVERSE
 Date of Survey: Commenced _____
 Completed _____

(b)(f)(g)(h) Description of monument found at this corner and if it was accepted, state all evidence (material, testimonial, occupational, plats, records, other monuments) used as a basis for accepting. If not accepted or if nothing was found, state evidence used as basis for establishing location. If reestablished through lost corner proportionate methods, indicate all monuments, distances and directions used to establish. Indicate type of monument and sign post found or set.

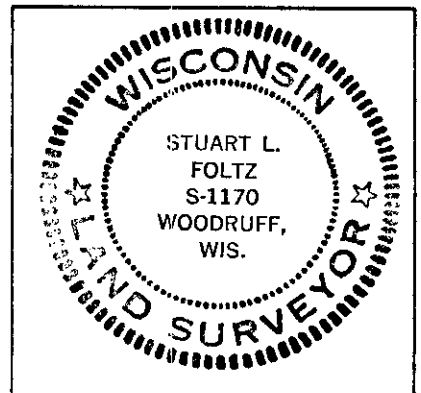
SEE REVERSE.

(c)(d)(e) Plan view of corner with ties to at least 4 witness monuments. If in disagreement with previously established corner, show the distances between the two corners and also indicate the ties to the disputed.



(i) I, Stuart L. Foltz, Registered Land Surveyor hereby certify that the corner location on this record was determined by me or under my direction and control and that this U.S. Public Land Survey Monument Record is correct and complete to the best of my knowledge and belief.

Stuart L. Foltz
 Signature _____ Date 1/19/1994
 Inman-Foltz and Associates, Inc.



INDEX NO. N-3

3707180020

November, 1863: Joseph Jenkins, US Deputy Surveyor, set a wood post witnessed by a tamarack 6" N55°E, 17 links, and a tamarack 8" S10°W, 21 links.

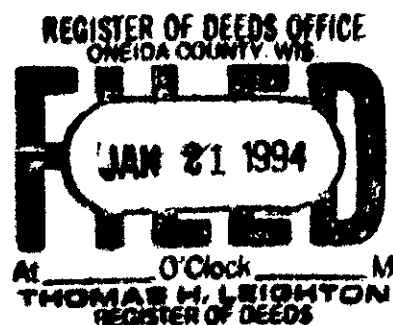
May, 1933: Map by V.M. Maine indicates he "found old stakes in open marsh with no BTs." He also indicates "cedar post sets near R.R. R.O.W. fence, O.K." Maine's map clearly shows the corner falling in the westerly right-of-way fence with a distance of 40.165 chains to the center of Section 18 which is shown as a "cement post." See Oneida County Surveyor Map #B-2441.

March, 1965: Map by James G. Griffin indicates corner is a "2" iron pipe 28' west of centerline of tracks," witnessed by a 12" double tamarack S59°W, 111.9' and a 4" spruce N37°E, 9.9'. Griffin's corner was set using single proportion measure. It is believed that Griffin was not aware that Maine had established this corner in 1933.

August, 1980: Map by F.H. Copp indicates corner is a DNR brass cap witnessed by a cedar 8" N68°E, 44.8' and a black spruce 10" N09°E, 13.1'. Copp's map indicates this location was "perpetuated by using dist. & directions from 1887 R.R. R.O.W. map." It is believed that Copp was not aware that Maine had established this corner in 1933.

January 3, 1994: Based on the 1933 Maine survey (OCS #B-2441), I computed a search location at a point 40.165 chains (2650.89') from Maine's concrete monument marking the center of Section 18, and Westerly 50' from the centerline of the Bearskin Trail. After an extensive search at this location, we recovered the remains of the old right-of-way fence, an old traverse nail, and several picket points. We did not recover Maine's cedar post. Accepting the computed location as the best remaining evidence of Maine's corner location, I monumented the point with a 2-1/2" dia., 60" long Oneida Co. capped aluminum monument stamped to identify its location. I witnessed the monument as shown on the front side of this form, and set a plastic sign post East, 1 foot.

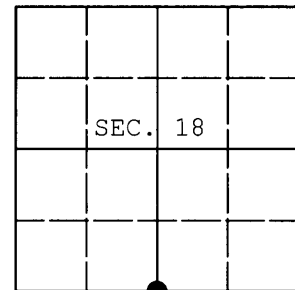
While working on the restoration of this corner I consulted with Surveyor Bill Rohde of the DNR Trout Lake Forestry Headquarters in Boulder Junction, Wisconsin, and he stated that he agrees with the new corner location we have established from Maine's 1933 survey because Copp did not have Maine's information when he set the DNR's brass cap in 1980. Also, a local land owner (Al Bromann) told me that the railroad tracks were not constructed in the location shown on the 1887 right-of-way map used by Copp to set his corner in 1980, although I have no further proof that this is true.



U.S. PUBLIC LAND SURVEY MONUMENT RECORD

Note: This form is intended and designed to fulfill all requirements of Wisconsin Administrative Code, Chapter A-E 7.08 U.S. Public Land Survey Monument Record (3) (a) (b) (c) (d) (e) (f) (g) (h) (i). An additional sheet may be added if necessary to conform with said requirements.

(a) CORNER LOCATION: WISCORS (Oneida County)
1/4 Cor. of Secs. 18 & 19 N: 183,239.12 USft
Township 37 North E: 199,849.29 USft
Range 7 East of the 4th P.M. Datum: NAD 1983(2011)
Town of Cassian County of Oneida



(b) HISTORY OF ORIGINAL CORNER ESTABLISHMENT

Original Surveyor: Original Accessories:
Date of Survey: Commenced:
Completed:

(b)(f)(g)(h) Description of monument found at this corner and if it was accepted, state all evidence (material, testimonial, occupational, plats, records, other monuments) used as a basis for accepting. If not accepted or if nothing was found, state evidence used as basis for establishing location. If re-established through lost corner proportionate methods, indicate all monuments, distances and directions used to establish. Indicate type of monument and sign post found or set.

NOTE: This is a perpetuation of a previous USPLS Monument Record by Stuart L. Foltz, RLS dated January 19, 1994 and filed in the office of the Oneida County Register of Deeds. A complete history of the corner can be found on the previous monument record. I accept the previous location as a true and faithful perpetuation or reestablishment of the original corner location and further perpetuate it as follows.

April 23, 2014: I found and accepted Foltz's monument, a 2.5" diam. aluminum monument with Oneida Co. aluminum cap. Foltz's accessories were found in substantial agreement with his previous record and were not remeasured as the sole purpose of this work is to report the coordinates of the corner point.

The coordinates shown were derived from a direct RTN GPS observation referenced to the WISCORS network.

(c)(d)(e) Plan view of corner with ties to at least 4 witness monuments. If in disagreement with previously established corner, show the distances between the two corners and also indicate the ties to the disputed.

REGISTER OF DEEDS OFFICE
ONEIDA COUNTY
FILED

MAY 22 2014

AT _____ O'CLOCK _____ M
KYLE J. FRANSON
REGISTER OF DEEDS

(i) I, Jeffrey W. Austin, Registered Land Surveyor No. S-1885, hereby certify that the corner location on this record was determined by me or under my direction and control and that this U.S. Public Land Survey Monument Record is correct and complete to the best of my knowledge and belief.



Signature

Date

May 9, 2014