

**U.S. PUBLIC LAND SURVEY MONUMENT LOCATION RECORD**

Recorders Data

CORNER: NW Section SECTION: 28 TOWNSHIP 37 NORTH RANGE 7 EAST/WEST

FOR M.C. CORNER INDICATE: NAME OF WATERWAY N/A SECTION LINE N/A

~~(CITY)~~(VILLAGE)(TOWN) OF: Cassian COUNTY OF: Oneida

Description of monument found or placed and all other evidence used as a basis for monument location; including all monuments and related measurements required if the corner location is reestablished by lost corner proportionate methods. Also indicate name of original surveyor, survey date, corner monument set and established bearing trees, witness or reference monuments with ties from available records.

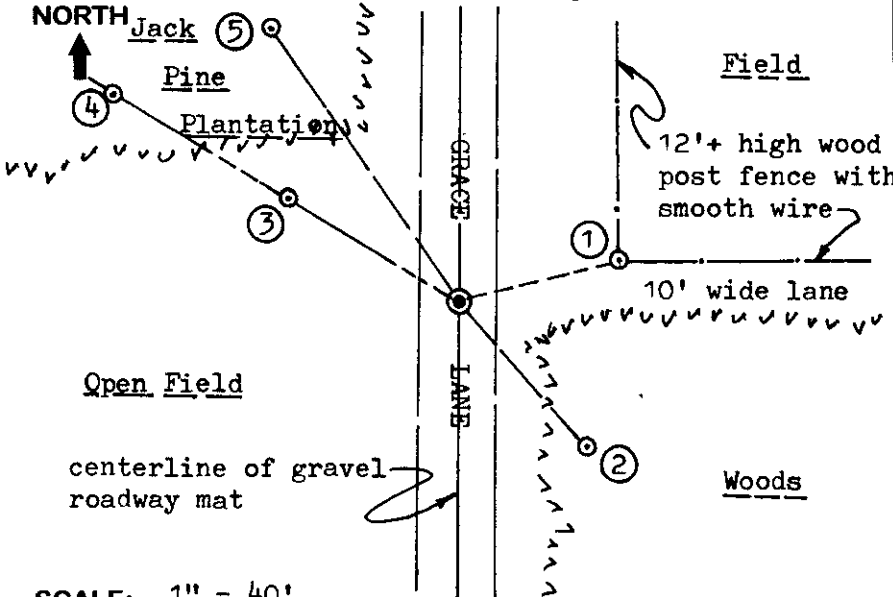
No corner evidence observed nor detected of any reliability at this corner location, so I reset the corner in existing gravelled roadway with a 3/4" dia. by 12" long steel rod at 6" below road upon the basis of a retracement survey per control diagram and related notes drafted upon the reverse side of this form.

In 1862, J.H. Jenkins/GLO set a wood post as original section corner and marked OBTs, a 12" Pw N67°W 20 lks, a 10" Pw N20°E 06 lks, a 12" Pw S36°E 59 lks and a 10" Tam S47°W 05 lks, all of which are now obliterated.

This recovery completed October 16, 1998; there were no witnesses other than occasional vehicle drive-bys and hordes of lady bugs in the area.

Note: A 60d control traverse spike is also located S59°E 9.91' from corner monument that was set for stake-out purposes and tied with bright orange flagging at grade.

Plan view map of monument location with bearing and distance ties to a minimum of four(4) described witness or reference monuments of concrete, natural stone, iron, live bearing trees or equivalent material. If applicable, also show a minimum of two(2) bearing and distance ties to any other monument found and not accepted; including the bearing and distance from the accepted monument. Indicate the basis for bearings of reference ties if not referenced to magnetic north.



**WITNESS MONUMENT TIES:**

- ① Wood corner fence post N75°E at 34.3'.
- ② New BT 4 1/2" Aspen S41°E 40.41'.
- ③ 1" dia. by 24" long iron pipe set with standard yellow poly Reference cap 2" above grade at N59°W 41.81' and also at N59°W 83.27' on a right line from corner monument center.
- ④ New BT 10" Pj N35°W 68.45'.

Note: Standard white poly 'T' marker post set S70°E 18.5' from the corner monument. Also nailed a standard BT sign to SE face of NW Pj BT.

SCALE: 1" = 40'

Unless otherwise indicated, all bearing tree ties are to a .25" dia. by 2.5" long PK nail with a 1.25" dia. steel washer driven into unblazed right face and a .25" dia. by 2.5" long PK nail with a 2" dia. steel washer stamped 'BT' is also driven into unblazed face of bearing tree at DBH; the basis for measured bearings is magnetic to nearest degree and all tie distances are horizontal measure to nearest 1/100th feet.

**LAND SURVEYOR CERTIFICATION:**

I, William C. Rohde, hereby certify that I am a duly licensed Professional Land Surveyor in Wisconsin, that this USPLS monument location was determined by me or under my direction and control, and that this U.S. Public Land Survey Monument Location Record is true and correct to the best of my knowledge and belief.

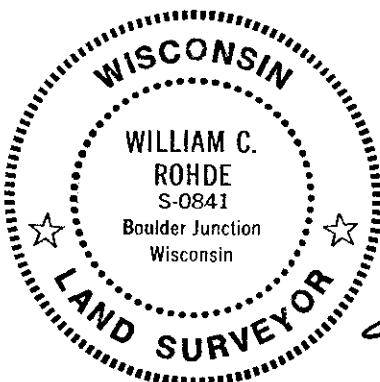
William C. Rohde Date: 10/27/98  
Signature

This form is intended to fulfill requirements of Chapter A-E 7.08 (3)(a)(b)(c)(d)(e)(f)(g)(h)(i) U.S. Public Land Survey Monument Location Record, Wisconsin Administrative Code. Use reverse side for geodetic location data and/or continuation purposes.

	T37N		
	28		
	R7E		

**SECTION LOCATION MAP**

INDEX NO. R-9  
3701 20 00 00

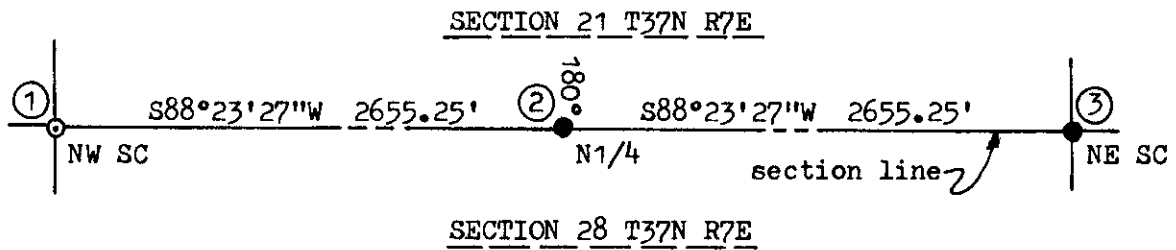


RLS SEAL

SHEET NO. 1 OF 1

Page 1 of 2

INDEX NO. R-9



MONUMENT LEGEND

- ① 3/4" dia. by 12" long iron shaft set by this survey.
- ② 3/4" dia. iron shaft found and accepted per USPLS Monument Location Record filed in Oneida County records.
- ③ 2" dia. iron pipe with brass cap found and accepted per USPLS Monument Location Record filed in Oneida County records.

REMARKS:

The NW Section corner of Section 28 was reestablished by a Topcon Total Station traverse by doubling the distance from the NE Section corner to the North 1/4 corner westerly on a right or straight line extension.

In 1862, J.H. Jenkins/GLO Deputy Surveyor, noted the North 1/4 corner at 40.20 chains or 2653.2' from opposite section corners, which compares within 2 feet of present measure; and this reestablishment locates the NW Section corner in the center of an existing North/South gravelled roadway and on the extension of an existing treeline along the edge of a cleared field easterly of the corner, as acceptable collateral evidence of its location.

Sheet 1 of 1  
Page 2 of 2

