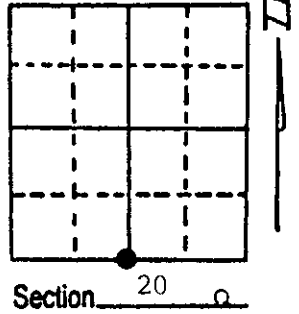
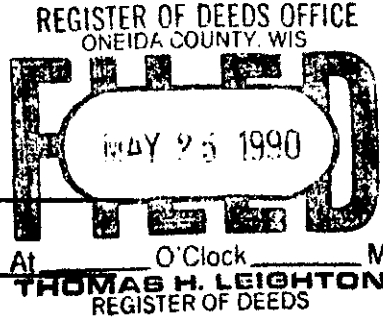


U.S. PUBLIC LAND SURVEY MONUMENT RECORD

Note: This form is intended and designed to fulfill all requirements of Wisconsin Administrative Code, Chapter A-E 7.08 U.S. Public Land Survey Monument Record (3) (a) (b) (c) (d) (e) (f) (g) (h) (i). An additional sheet may be added if necessary to conform with said requirements.

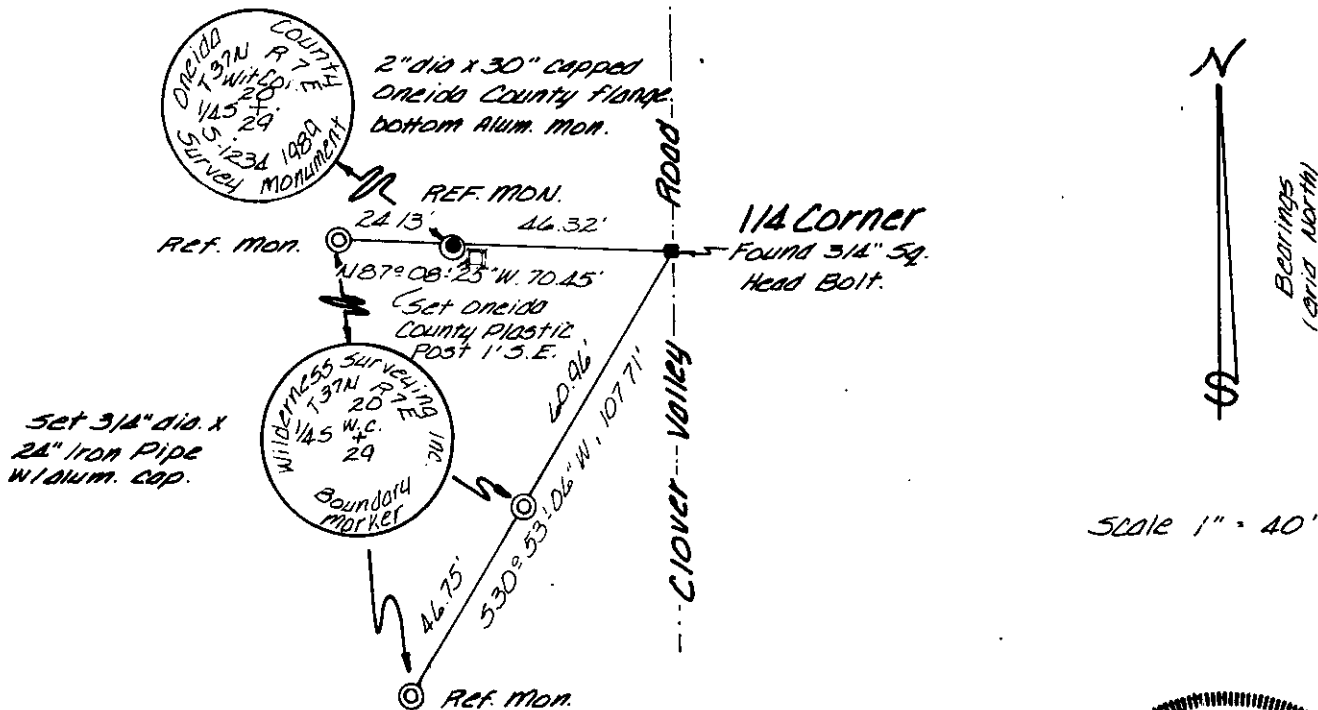
(a) Corner location: Township 37 North
 Range 7 East/West
 Town/City/Village Cassian
 County Oneida



(b) (f) (g) (h) Description of monument found at this corner and if it was accepted, state all evidence (material, testimonial, occupational, plats, records, other monuments) used as a basis for accepting. If not accepted or if nothing was found, state evidence used as basis for establishing location. If reestablished through lost corner proportionate methods, indicate all monuments, distances and directions used to establish.

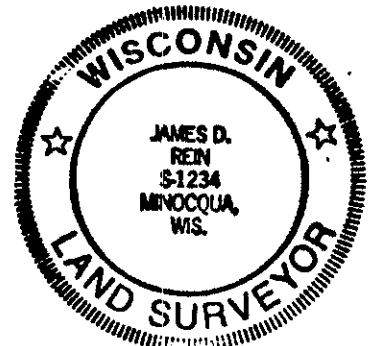
November 1862 - Joseph Jenkins, Deputy Surveyor, set 1/4 section post. Bearing trees: 8" White Pine, S42°E, 15 links; 8" White Pine, N32°, 5 links
 May 10, 1972 - Edward McNow, Surveyor, identifies corner position as being on the centerline of Clover Valley Road and on fence line extended from the east and west.
 July 21, 1989 - James D. Rein, Registered Land Surveyor, recovered a 3/4" squared head bolt in the centerline of Clover Valley Road and on fence line extended from the east. Set reference monuments as shown on detail below.

(c) (d) (e) Plan view of corner with ties to 4 witness monuments. If in disagreement with previously established corner, show the distance between the two corners and also indicate the ties to the disputed corner.



(i) I, James D. Rein, Registered Land Surveyor No. 1234
 (type or print name) certify that the corner location on this record was determined by me or under my direction and control and that this U.S. Public Land Survey Monument Record is correct and complete to the best of my knowledge and belief.

James D. Rein Signature August 2nd, 1989 Date



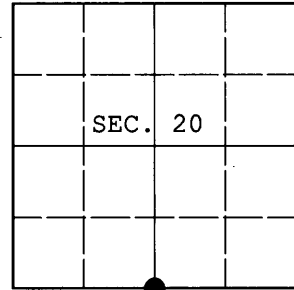
Index No. R-7

3707200020

U.S. PUBLIC LAND SURVEY MONUMENT RECORD

Note: This form is intended and designed to fulfill all requirements of Wisconsin Administrative Code, Chapter A-E 7.08 U.S. Public Land Survey Monument Record (3) (a) (b) (c) (d) (e) (f) (g) (h) (i). An additional sheet may be added if necessary to conform with said requirements.

(a) CORNER LOCATION: Plane Coordinates
 1/4 Cor. of Secs. 20 & 29 X:
 Township 37 North Y:
 Range 7 East of the 4th P.M. Datum:
 Town of Cassian County of Oneida



(b) HISTORY OF ORIGINAL CORNER ESTABLISHMENT

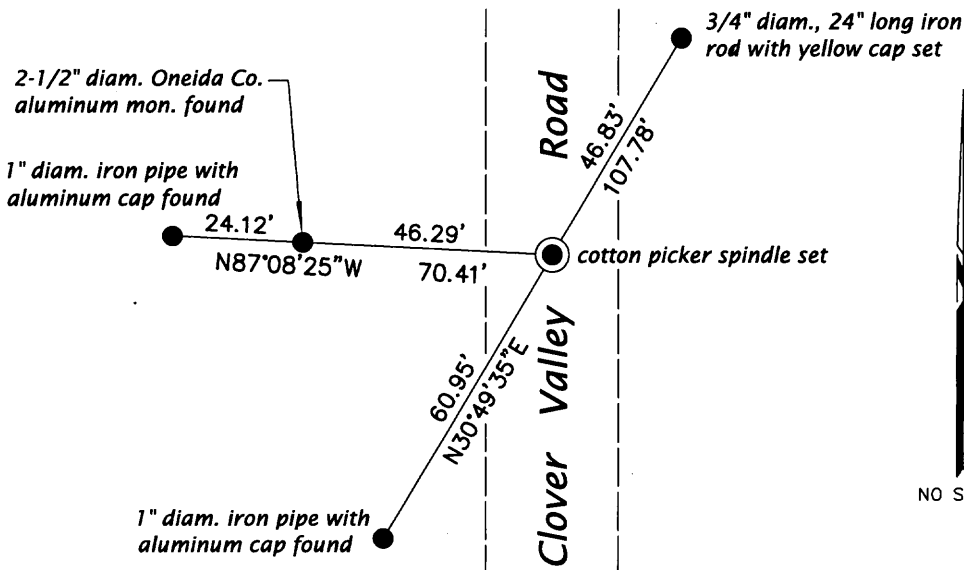
Original Surveyor: Joseph Jenkins Original Accessories:
 Date of Survey: Commenced Nov., 1862 white pine 8" S.42°E., 15 lks.
 Completed Nov., 1862 white pine 8" N.32°., 5 lks.

(b) (f) (g) (h) Description of monument found at this corner and if it was accepted, state all evidence (material, testimonial, occupational, plats, records, other monuments) used as a basis for accepting. If not accepted or if nothing was found, state evidence used as basis for establishing location. If re-established through lost corner proportionate methods, indicate all monuments, distances and directions used to establish. Indicate type of monument and sign post found or set.

NOTE: This is a perpetuation of a previous USPLS Monument Record by James D. Rein, RLS dated August 2, 1989 and filed in the office of the Oneida County Register of Deeds. A complete history of the corner can be found on the previous monument record. I accept the previous location as a true and faithful perpetuation or reestablishment of the original corner location and further perpetuate it as follows.

May 4, 2011: I found and accepted Rein's monument, the shaft of a headless bolt in the pavement of Clover Valley Road. I replaced the bolt with a cotton picker spindle. A PK nail of unknown origin bears N30°08'W, 0.71 feet. This nail has possibly been used as the quarter-section corner in the past. Rein's reference monument at 107.71 feet was not recovered. I found or established accessories as shown below and found a white plastic sign post adjacent to the Oneida County monument.

(c) (d) (e) Plan view of corner with ties to at least 4 witness monuments. If in disagreement with previously established corner, show the distances between the two corners and also indicate the ties to the disputed.



REGISTER OF DEEDS OFFICE
 ONEIDA COUNTY, WIS.
FILED
 SEP 19 2011
 At _____ O'Clock _____ M
THOMAS H. LEIGHTON
 REGISTER OF DEEDS

NO SCALE

(i) I, Jeffrey W. Austin, Registered Land Surveyor No. S-1885, hereby certify upon honor that the corner location on this record was determined by me or under my direction and control and that this U.S. Public Land Survey Monument Record is correct and complete to the best of my knowledge and belief.



3707200020 (INDEX NO. R-7)

Signature

Date

SEP. 10, 2011