

U.S. PUBLIC LAND SURVEY MONUMENT LOCATION RECORD

Recorders Data

CORNER: North 1/4 SECTION: 28 TOWNSHIP 37 NORTH RANGE 7 EAST WEST

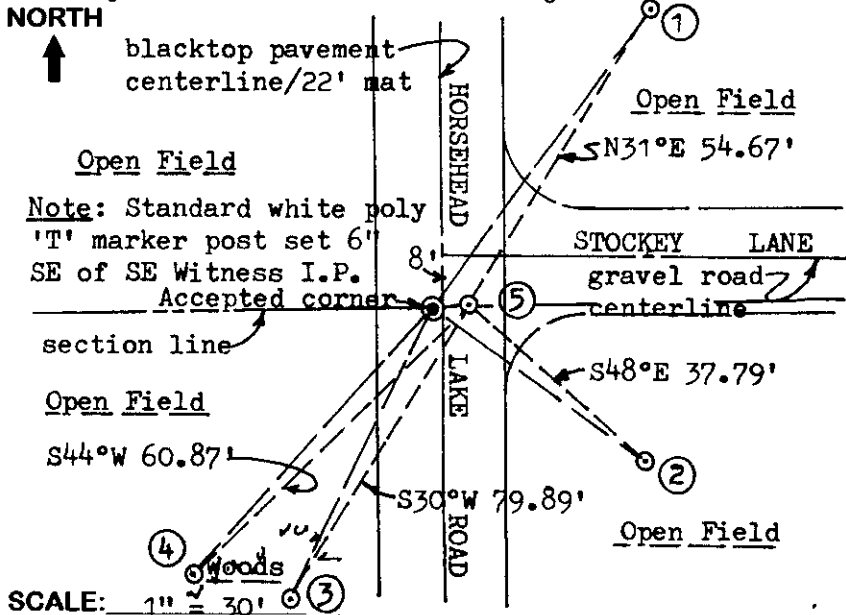
FOR M.C. CORNER INDICATE: NAME OF WATERWAY N/A SECTION LINE N/A

(CITY/VILLAGE/TOWN) OF: Cassian COUNTY OF: Oneida

Description of monument found or placed and all other evidence used as a basis for monument location; including all monuments and related measurements required if the corner location is reestablished by lost corner proportionate methods. Also indicate name of original surveyor, survey date, corner monument set and established bearing trees, witness or reference monuments with ties from available records.

I dug and found the top of an undisturbed 3/4" dia. steel shaft 9" below existing blacktop pavement surface and 0.9' +/- West of pavement centerline; I also dug and found the top of an undisturbed 3/4" dia. re-bar 11" below existing blacktop pavement surface and 4.3' +/- East of pavement centerline. It was therefore necessary to complete the sectional control survey per diagram and related notes drafted upon the reverse side of this form, in order to select which monument would be the most acceptable for purposes of this corner recovery. As a result, I accepted the steel shaft monument found west of the pavement centerline, as by doubling the distance from the NE section corner to it westerly on a right or straight line extension to locate the NW section corner, it fell in the center of an existing North & South roadway, and it resulted in distances each way more consistent with that measured by original GLO survey in 1862; the steel shaft was also observed as being older than the found re-bar by rusting degree of metal surface and also a distinct rust ring stain in soil around the steel shaft and not evidenced for the re-bar found. To perpetuate both monuments at the request of the Oneida County Surveyor, I set a 1" dia. by 24" long iron pipe over each found monument with a standard yellow poly Reference Mark cap in top 1" below blacktop surface and also set a 1/4" dia. by 2 1/2" long PK nail with 1 1/4" dia. washer in the top center of poly cap. No evidence of original GLO wood corner post or OBTs was found, nor any other by subsequent surveys within a half chain radius of the corner in roadway area. This recovery completed October 14, 1998; there were no direct witnesses other than vehicular drive-bys.

Plan view map of monument location with bearing and distance ties to a minimum of four(4) described witness or reference monuments of concrete, natural stone, iron, live bearing trees or equivalent material. If applicable, also show a minimum of two(2) bearing and distance ties to any other monument found and not accepted; including the bearing and distance from the accepted monument. Indicate the basis for bearings of reference ties if not referenced to magnetic north.

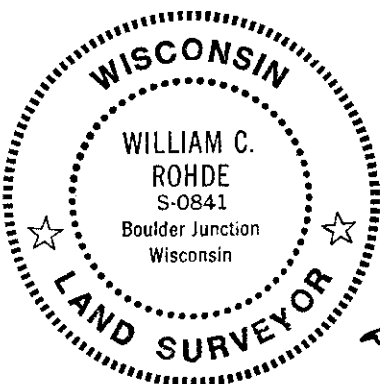


WITNESS MONUMENT TIES:

- ① 1" dia. by 24" long iron pipe set with standard yellow poly Reference Mark cap 1" above grade at N35°E 58.36'.
- ② 1" dia. by 24" long iron pipe set with standard yellow poly Reference Mark cap 1" above grade at S54°E 41.24'.
- ③ New BT 12" Aspen S26°W 76.53'.
- ④ 1" dia. by 24" long iron pipe set with standard yellow poly Reference Mark cap 1" above grade at S42°W 56.55'.
- ⑤ Unaccepted monument found described above, N80°E 5.40'.

SCALE: 1" = 30'

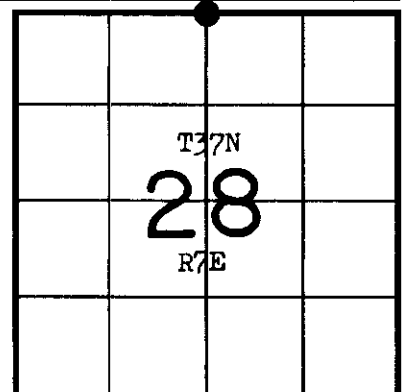
Unless otherwise indicated, all bearing tree ties are to a .25" dia. by 2.5" long PK nail with a 1.25" dia. steel washer driven into unblazed right face and a .25" dia. by 2.5" long PK nail with a 2" dia. steel washer stamped 'BT' is also driven into unblazed face of bearing tree at DBH; the basis for measured bearings is magnetic to nearest degree and all tie distances are horizontal measure to nearest 1/100th feet.



LAND SURVEYOR CERTIFICATION:

I, William C. Rohde, hereby certify that I am a duly licensed Professional Land Surveyor in Wisconsin, that this USPLS monument location was determined by me or under my direction and control, and that this U.S. Public Land Survey Monument Location Record is true and correct to the best of my knowledge and belief.

William C. Rohde Date: 10/28/98
Signature



INDEX NO. R 11

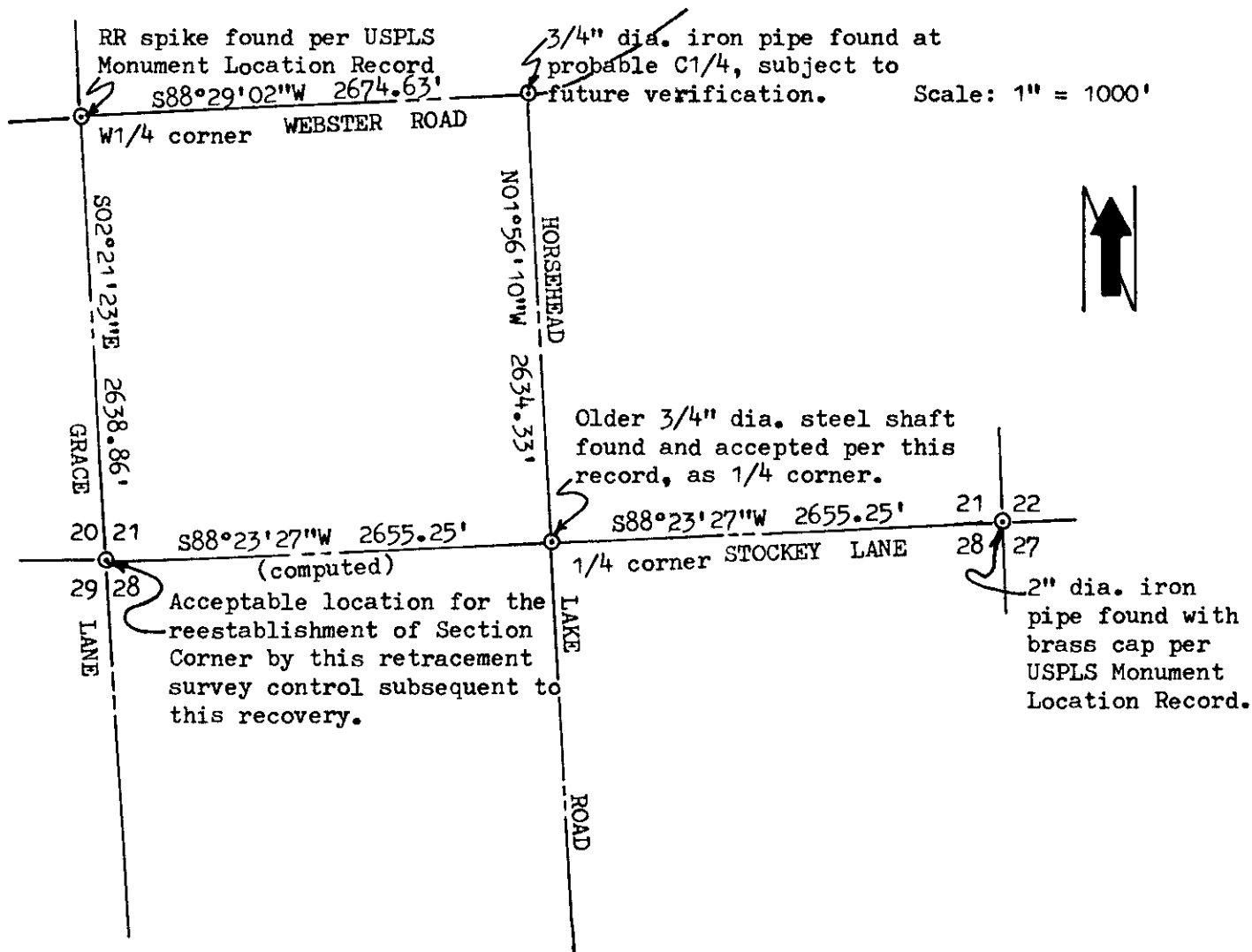
SECTION LOCATION MAP

INDEX NO. R 11
3107210020

RLS SEAL

SHEET NO. 1 OF 1
Page 1 of 2

This form is intended to fulfill requirements of Chapter A-E 7.08 (3)(a)(b)(c)(d)(e)(f)(g)(h)(i) U.S. Public Land Survey Monument Location Record, Wisconsin Administrative Code. Use reverse side for geodetic location data and/or continuation purposes.

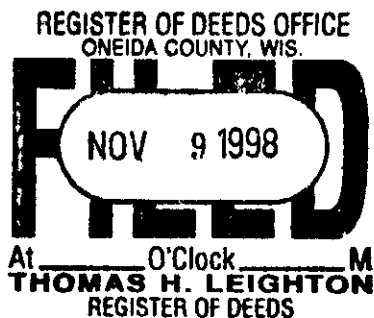


REMARKS:

If the re-bar monument found East of pavement centerline would be used as the 1/4 corner, a similar doubling application would place the NW section corner of Section 28 10.7' further East off the existing North/South roadway and would compare at a greater measurement difference with original GLO survey.

In 1862, the 1/4 corner was established by GLO survey at a distance of 40.20 chains to opposite section corners, or 2653.20' each way, which compares within 2.05' by present measure.

In 1935, Maine surveyed from the South 1/4 of Section 33 along the center quarter lines of Section 33, Section 28 and Section 21 for the Town for roadway purposes; however, noted distances and angles were only valid for general comparison purposes, as no involved corner monuments or BTs were of acceptable reference for retracement purposes.

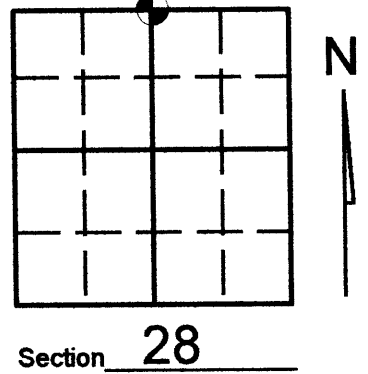


U.S. PUBLIC LAND SURVEY MONUMENT RECORD

Note: This form is intended and designed to fulfill all requirements of Wisconsin Administrative Code, Chapter A-E 7.08 U.S. Public Land Survey Monument Record (3)(a)(b)(c)(d)(e)(f)(g)(h)(i). An additional sheet may be added if necessary to conform with said requirements.

(a) Corner location: Township 37 North
 Range 07 East/West

Town/City/Village CASSIAN
 County ONEIDA



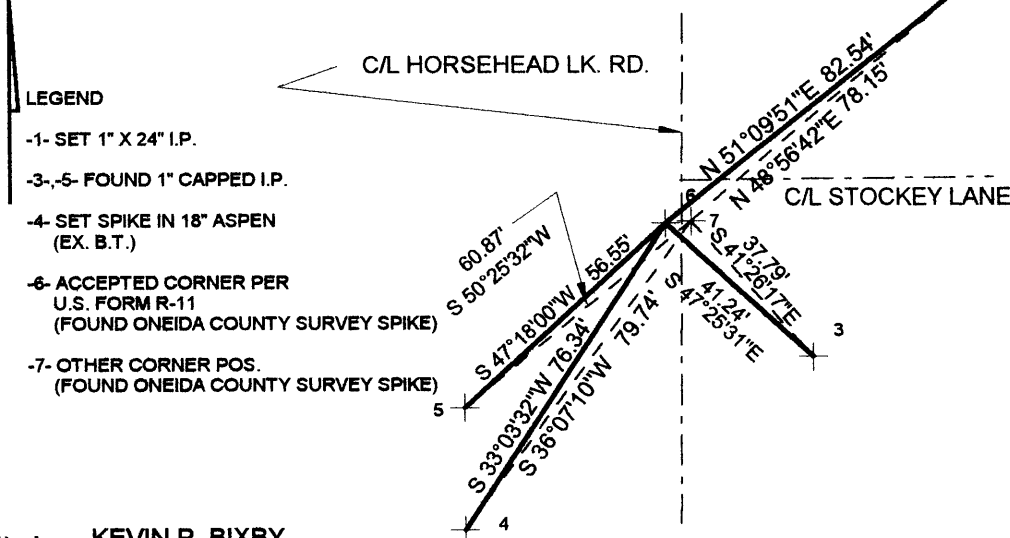
(b) (f) (g) (h) Description of monument found at this corner and if it was accepted, state all evidence (material, testimonial, occupational, plats, records, other monuments) used as a basis for accepting. If not accepted or if nothing was found, state evidence used as basis for establishing location. If reestablished through lost corner proportionate methods, indicate all monuments, distances and directions used to establish. Indicate type of monument found or set and sign post.

-08/03/06- Kevin Bixby found two Oneida County survey spikes per position as noted on U.S. Public Land form R-11 and witnessed as shown below.



(c) (d) (e) Plan view of corner with ties to at least 4 witness monuments. If in disagreement with previously established corner, show the distances between the two corners and also indicate the ties to the disputed corner.

N ANGLES AND DISTANCES MEASURED WITH TOTAL STATION. DISTANCES MEASURED TO HEADS OF SPIKES.



SCALE: 1"=40'

POST-CONSTRUCTION

(i) I, KEVIN P. BIXBY

(type or print name) certify that the corner location on this record was determined by me or under my direction and control and that this U.S. Public Land Survey Monument Record is correct and complete to the best of my knowledge and belief.

Kevin P. Bixby
 Signature

08/04/06
 Date



Stamp

3707210020

Index No. R-11