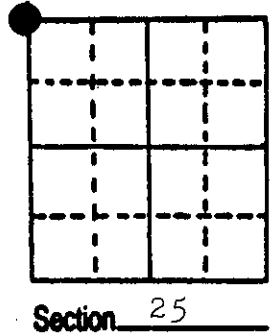


# U.S. PUBLIC LAND SURVEY MONUMENT RECORD

**Note:** This form is intended and designed to fulfill all requirements of Wisconsin Administrative Code, Chapter A-E 5.02, U.S. Public Land Survey Monument Record (3) (a) (b) (c) (d) (e) (f) (g) (h) (i). An additional sheet may be added if necessary to conform with said requirements.

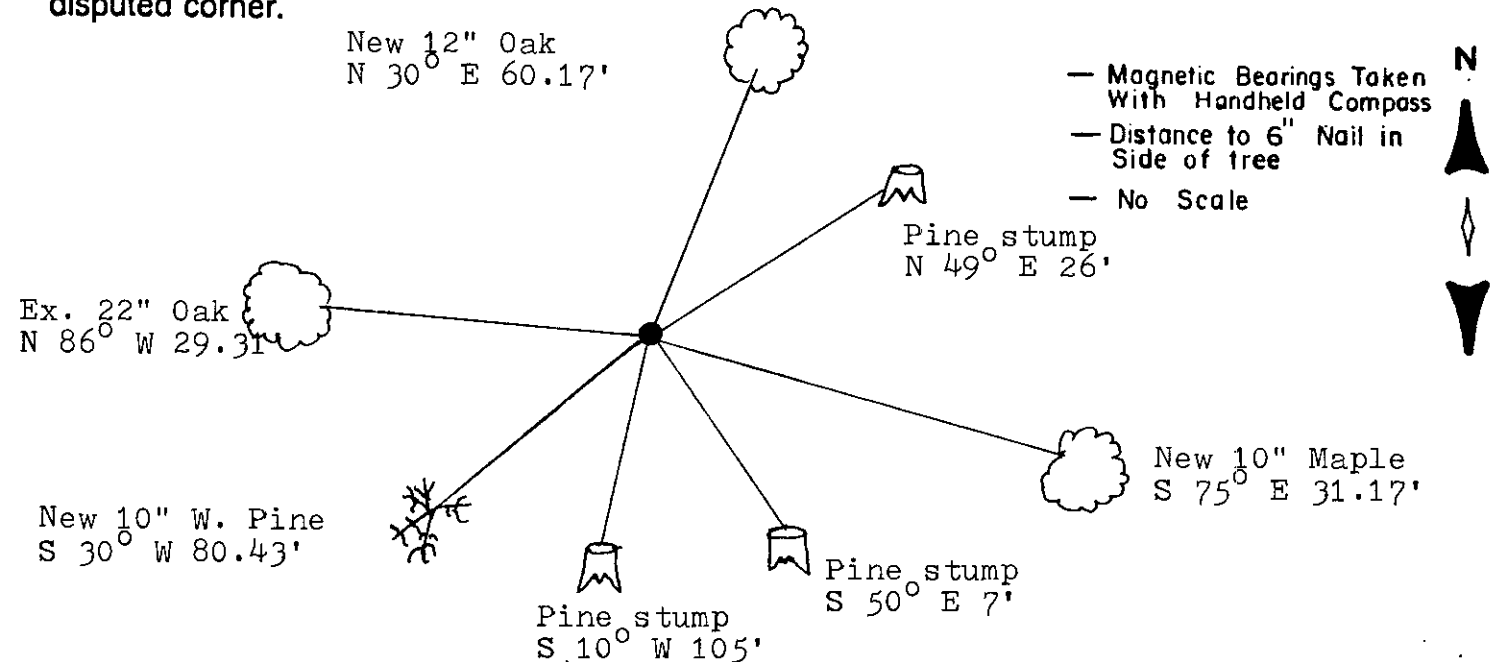
(a) Corner location: Township 37 North  
 Range 7 East ~~West~~  
 Town/Range ~~37 North~~ Cassian  
 County Oneida



(b) (f) (g) (h) Description of monument found at this corner and if it was accepted, state all evidence (material, testimonial, occupational, plats, records, other monuments) used as a basis for accepting. If not accepted or if nothing was found, state evidence used as basis for establishing location. If reestablished through lost corner proportionate methods, indicate all monuments, distances and directions used to establish.

- 1862 Original corner by Jenkins. North between 25 and 26 80.00 set corner BT's Birch 10" N 27° W 26 lks, Birch 8" S 16° E 63 lks, Birch 8" N 70° E 70 lks, Birch 8" S 18° W 20 lks.
- 1920 D.H. Vaughan sets corner by double proportion. BT's W. Pine stump 30" S 54° E 10 1/4 lks, W. Pine stump 27" S 10° W 160 lks.
- 1937 V. Maine found Vaughan's BT's, set iron pipe with brass cap and made BT's B. Oak 5" N 86° W .44, W. Pine stump 30" N 49° E .35.
- 1987 I found Maine's capped iron pipe and BT's as shown below.

(c) (d) (e) Plan view of corner with ties to at least 4 witness monuments. If in disagreement with previously established corner, show the distances between the two corners and also indicate the ties to the disputed corner.



(i) I, William E. Badow  
 (type or print name) certify that the corner location on this record was determined by me or under my direction and control and that this U.S. Public Land Survey Monument Record is correct and complete to the best of my knowledge and belief.

William E. Badow 11-11-87  
 Signature Date



Index No. R-2

GENISOT & ASSOCIATES INC.  
 1512 EAGLE ST., RHINELANDER, WIS.

3707230000