

At \_\_\_\_\_ O'Clock \_\_\_\_\_ M  
**THOMAS H. LEIGHTON**  
 REGISTER OF DEEDS

This form is intended to fulfill the requirements of Chapter A-E7.08 (3)(a) thru (i) U.S. Public Land Survey Monument Location Record, Wisconsin Administrative Code. Use the reverse side of form for continuation.

**U.S. PUBLIC LAND SURVEY MONUMENT LOCATION RECORD**

Recorders Data

USPLS CORNER: **SOUTH MC** SECTION: **19** TOWNSHIP: **37** NORTH RANGE: **8** EAST  
 NAME OF WATERWAY FOR M.C. CORNER : **MILDRED LAKE** SECTION LINE: **WEST**  
 (CITY)(VILLAGE)(TOWN) OF: **NEWBOLD** COUNTY OF: **ONEIDA**

Description of monument found or placed and all other evidence used as the basis for monument location; including monuments and measurements required if the corner location was reestablished by lost corner proportionate methods. Also indicate name of the original surveyor, original survey date and the corner monument, bearing trees, witness or other reference monuments established, including measured bearing and distance ties, from available survey records.

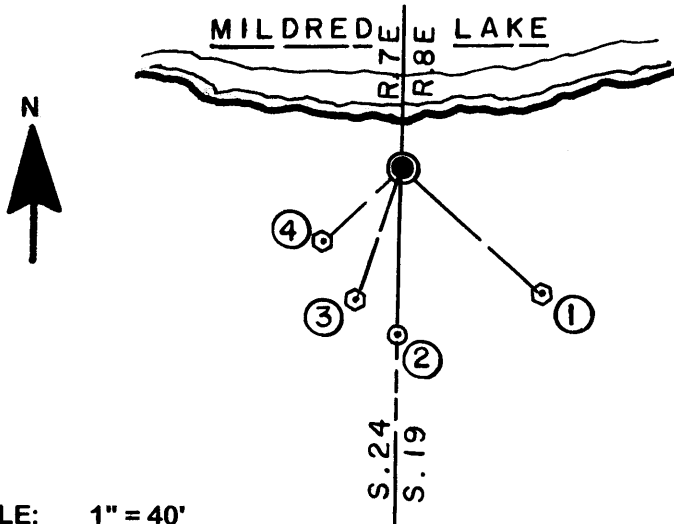
In August/September 1860, Alfred Millard/GLO set a wood post as original MC, now gone, and noted OBTs: a 9" By S84°E 10 links, now gone, and a 20" Pw S22°W 47 links, now a 20" high rotted stump with lower blaze face missing at S24°W 31'+/-.

On County Plat of Lake Mildred Park filed in Oneida County records, James D. Rein/RLS 1234, notes a 3/4" dia. iron pipe found at this MC and notes BTs: Original GLO Pw stump S22°W 31.3', 13" Oak S77°E 13.6' and a 20" Pr S40°W 22.5'.

In August 1984, Michael J. Romportl/RLS 1624, notes an iron pipe found at this MC and a 1" dia. x 24" long iron pipe set S0°47'E 35.61' from the MC iron pipe, per Certified Survey Map No. 1088/1088A filed in Oneida County records. In June 1990, Michael J. Romportl/RLS 1624, notes that both of the latter 1984 iron pipes were found per Certified Survey Map No. 1411/1411A filed in Oneida County records.

On June 28, 2006, I found an old rusty and bent 3/4" dia. iron pipe in a cairn of rocks at this MC, which I carefully removed and drove a standard 2" dia. aluminum pipe monument with stamped Oneida County cap into soli cavity of old iron pipe to 4" above cairn of rocks around the monument. Corner falls 10' South of lakeshore line this date and 3'+/- North of OHWM; This recovery witnessed by Jeffrey & Karen Hall, owners of improved lake Lot 1 of above county plat at Fire No. 7298 on Mildred Parkway. This recovered corner may be subject to future disturbance by lake ice jamming onto the lakeshore.

Plan view map of monument location with bearing and distance ties to a minimum of four(4) described witness or reference monuments of concrete, natural stone, iron, live bearing trees or equivalent material. If applicable, also show a minimum of two(2) bearing and distance ties to any other monument found and not accepted; including the bearing and distance from the accepted monument.



SCALE: 1" = 40'

Unless otherwise indicated, all bearing tree ties are to a .25" dia. by 2.5" long PK nail with a 1.25" dia. steel washer driven into unblazed right face and a .25" dia. by 2.5" long PK nail with a 2" dia. steel washer stamped BT is also driven into unblazed face of bearing tree at DBH; the basis for measured bearings is by compass to nearest degree and all tie distances are measured horizontal by steel tape corrected to nearest 1/100th feet at standard temperature of 68° F.

**WITNESS MONUMENT TIES:**

- ① New 18" Pr BT S43°E 39.35'.
- ② Old 1" dia. iron pipe found with uncapped top 3" above grade S02°W 35.23'.
- ③ New 6" Mr BT S19°W 29.05'.
- ④ Old 19" Pr BT with lower blaze partially shut S44°W 22.39'; I nailed a standard BT sign to upper face.

I set a standard white poly "T" marker post 5.5' South of monument at bottom edge of steep slope up to South.

**RLS SEAL:**



**LAND SURVEYOR CERTIFICATE:**

I, William C. Rohde, hereby certify that I am duly licensed as a Professional Land Surveyor in the State of Wisconsin; that this USPLS monument location was determined by me and/or under my direct supervision and control; and that this U.S. Public Land Survey Monument Location Record is true and correct to the best of my knowledge and belief.

Signed: *William C. Rohde*  
 William C. Rohde RLS 841

