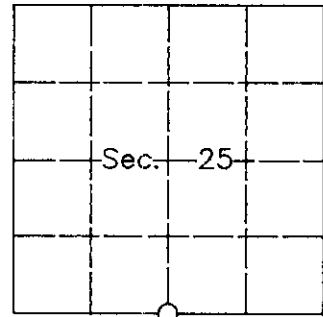


U.S. PUBLIC LAND SURVEY MONUMENT RECORD

Note: This form is intended and designed to fulfill all requirements of Wisconsin Administrative Code, Chapter A-E 7.08 U.S. Public Land Survey Monument Record (3)(a)(b)(c)(d)(e)(f)(g)(h)(i). An additional sheet may be added if necessary to conform with said requirements.

(a) CORNER LOCATION: State Plane Coordinates
 South 1/4 corner of Sec. 25 X _____
 Township 37 North Y _____
 Range 7 East Datum _____
 Town/City Cassian County of Oneida



(b) HISTORY OF ORIGINAL CORNER ESTABLISHMENT

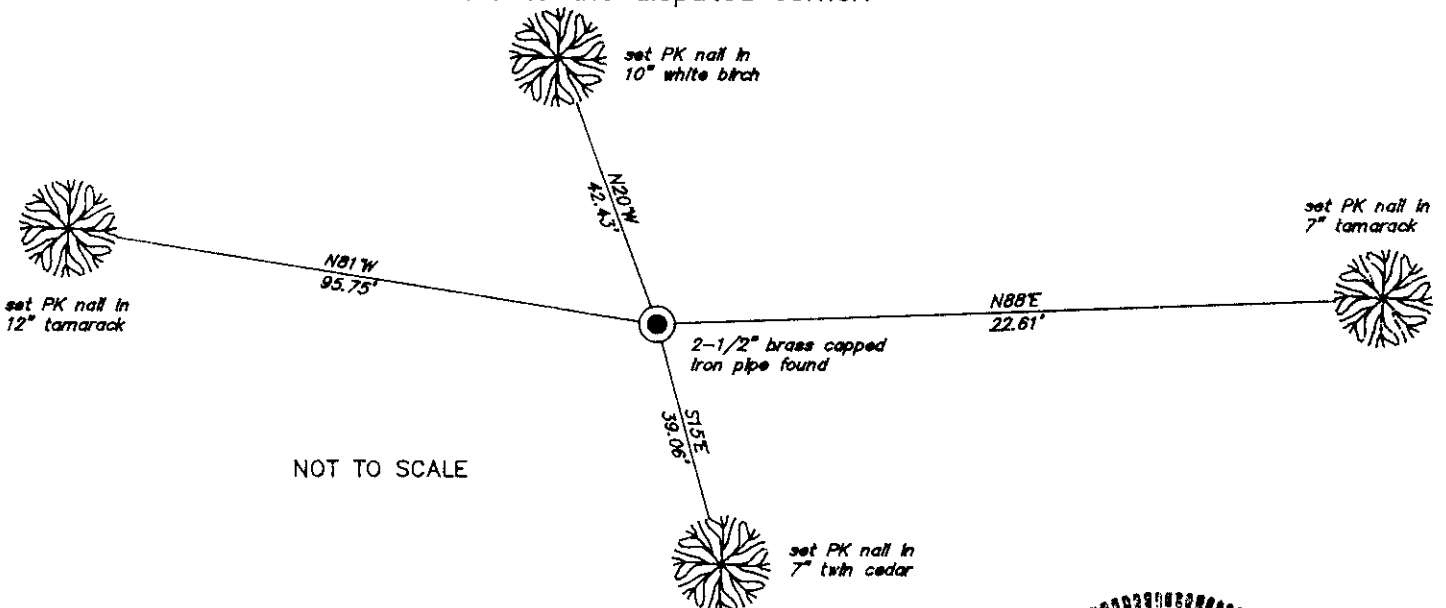
Original Surveyor: Joseph Jenkins Original B.T.s
 Date of Survey: Commenced November, 1863
 Completed November, 1863 Tamarack 8 N10°W, 11
 Tamarack 8 S11°W, 23

(b)(f)(g)(h) Description of monument found at this corner and if it was accepted, state all evidence (material, testimonial, occupational, plats, records, other monuments) used as a basis for accepting. If not accepted or if nothing was found, state evidence used as a basis for establishing location. If reestablished through lost corner proportionate methods, indicate all monuments, distances and directions used to establish. Indicate type of monument and sign post found or set.

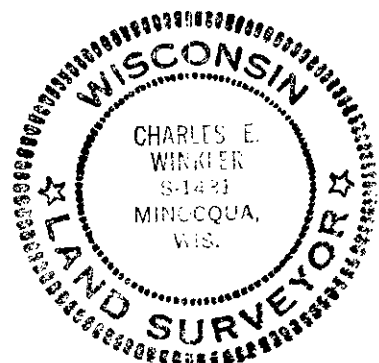
June, 1936: Notes by V.M. Maine indicate he found evidence of the original stake and set an official iron pipe to perpetuate the corner location. He marked the following bearing trees: cedar 5" S17°E, .12, spruce 5" S44°W, .44-1/2.

May 27, 1994: I found and accepted Maine's 2-1/2" brass capped iron pipe. I marked new bearing trees as shown below. I set a plastic sign post North, 1 foot.

(c)(d)(e) Plan view of corner with ties to at least 4 witness monuments. If in disagreement with previously established corner, show the distance between the two corners and also indicate the ties to the disputed corner.



(i) I, Charles E. Winkler, Registered Land Surveyor S-1431 hereby certify that the corner location on this record was determined by me or under my direction and control and that this U.S. Public Land Survey Monument Record is correct and complete to the best of my knowledge and belief.



INDEX NO: V-23

Charles E. Winkler 8-31-94
 Signature Inman-Foltz & Associates, Inc. Date

3707250020