

U.S. PUBLIC LAND SURVEY MONUMENT LOCATION RECORD

Recorders Data

CORNER: North 1/4 SECTION: 33 TOWNSHIP 37 NORTH RANGE 7 EAST/WEST

FOR M.C. CORNER INDICATE: NAME OF WATERWAY N/A SECTION LINE N/A

~~CITY/VILLAGE/TOWN~~ OF: Cassian COUNTY OF: Oneida

Description of monument found or placed and all other evidence used as a basis for monument location; including all monuments and related measurements required if the corner location is reestablished by lost corner proportionate methods. Also indicate name of original surveyor, survey date, corner monument set and established bearing trees, witness or reference monuments with ties from available records.

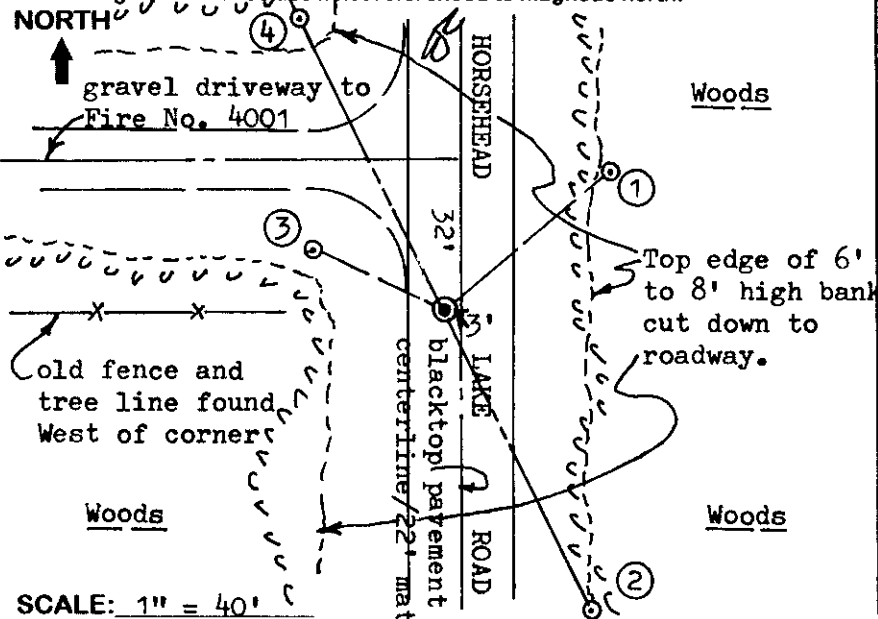
No evidence observed nor detected at this corner location, so I reestablished the corner upon the basis of a retracement survey per control diagram on the reverse side of this form with related notes, and reset the corner with a 3/4" dia. by 12" steel rod driven flush with existing blacktop pavement surface.

In 1862, J.H. Jenkins set a wood post as the original 1/4 corner and marked OBTs, a 10" Bw S18°E 28 lks and an 8" Fir N06°W 15 lks, all of which are now obliterated within existing roadway cut area. It is noted that the GIO had measured the North line of Section 33 at 79.50 chains.

In 1912, Vaughn set a new wood post at the corner by single proportion and marked new BTs, a 30" Pw stump N63½°E 28 lks and a 16" Pw stump S18°E 53.75 lks, all of which are also now obliterated within roadway cut area.

In 1934, Hall noted a distance of 40.05 chains from Vaughns 1/4 corner North to the C1/4 of Section 28, and that he set an I.P. at this 1/4 corner in roadway which is also gone in existing roadway cut area. In 1935, Maine also noted Vaughns corner at this 1/4 corner and distances North and South to the C1/4 corners of adjoining Sections 28 and 33, but noted no BTs monument description. In 1958, Branham noted an "iron pin in blacktop" at this corner location from which he set an iron pipe at the N1/16NW at 19.66 chains West by single proportional measure to the NW corner of Section 33. This recovery completed October 21, 1998.

Plan view map of monument location with bearing and distance ties to a minimum of four(4) described witness or reference monuments of concrete, natural stone, iron, live bearing trees or equivalent material. If applicable, also show a minimum of two(2) bearing and distance ties to any other monument found and not accepted; including the bearing and distance from the accepted monument. Indicate the basis for bearings of reference ties if not referenced to magnetic north.



WITNESS MONUMENT TIES:

- ① 1" dia. by 30" long iron pipe set with standard yellow poly Reference Mark cap 1" above grade N50°E at 45.00'.
- ② 1" dia. by 24" long iron pipe set with standard yellow poly Reference Mark cap 1" above grade S26°E 69.87' and also at N26°W 67.45' on a right line thru corner monument center.
- ③ 1" dia. by 24" long iron pipe set on side of high bank cut slope at N65°W 30.15', 1" above grade and 2½' North of tipped Fire No. sign.
- ④

Note: Standard white poly 'T' marker post 29' East of corner.

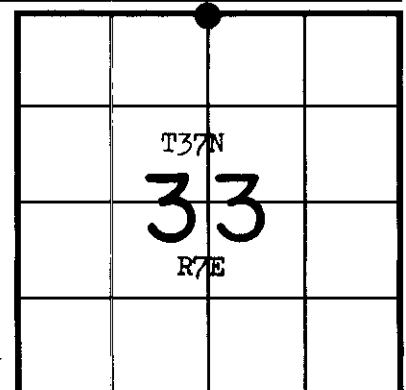
Unless otherwise indicated, all bearing tree ties are to a .25" dia. by 2.5" long PK nail with a 1.25" dia. steel washer driven into unblazed right face and a .25" dia. by 2.5" long PK nail with a 2" dia. steel washer stamped 'BT' is also driven into unblazed face of bearing tree at DBH; the basis for measured bearings is magnetic to nearest degree and all tie distances are horizontal measure to nearest 1/100th feet.

LAND SURVEYOR CERTIFICATION:

I, William C. Rohde, hereby certify that I am a duly licensed Professional Land Surveyor in Wisconsin, that this USPLS monument location was determined by me or under my direction and control, and that this U.S. Public Land Survey Monument Location Record is true and correct to the best of my knowledge and belief.

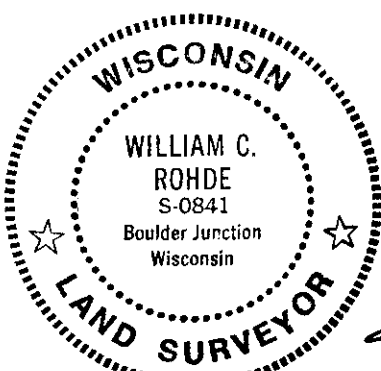
William C. Rohde Date: 10/29/98
Signature

This form is intended to fulfill requirements of Chapter A-E 7.08 (3)(a)(b)(c)(d)(e)(f)(g)(h)(i) U.S. Public Land Survey Monument Location Record, Wisconsin Administrative Code. Use reverse side for geodetic location data and/or continuation purposes.



SECTION LOCATION MAP

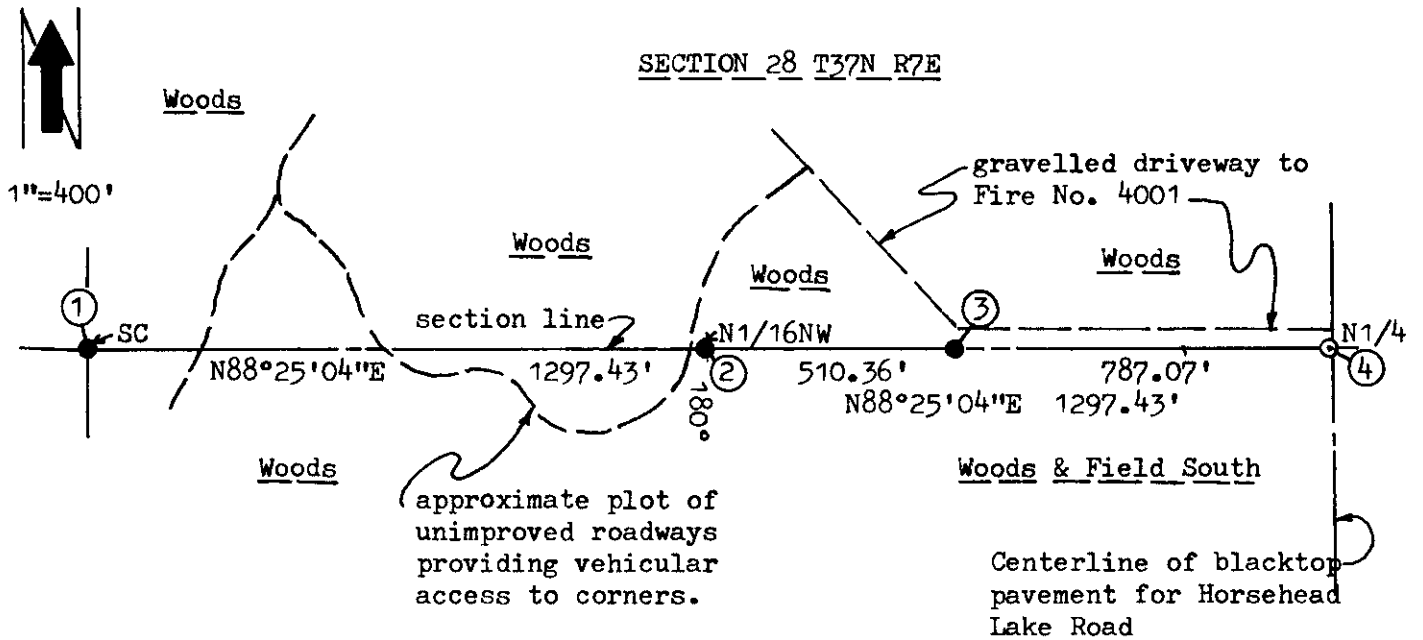
INDEX NO. V 11
3707280020



RLS SEAL

SHEET NO. 1 OF 1
Page 1 of 2

INDEX NO. V 11



Monument Legend

SECTION 33 T37N R7E

- ① 2" dia. iron pipe found with brass cap.*
- ② 1" dia. iron pipe found.*
- ③ 1" dia. by 16" long iron pipe set on section line.
- ④ 3/4" dia. by 12" long iron shaft set flush in blacktop pavement for corner location on reverse of this record.

* See USPLS Monument Location Record filed in Oneida County records.

Remarks:

In 1958, Branham set the iron pipe found at N1/16NW corner midway on a right line between the NW Section corner and North 1/4 corner of Section 33.

Therefore, the North 1/4 corner was reestablished by a Topcon Total Station traverse by doubling the distance from the NW Section corner to the N1/16NW corner easterly on a right or straight line extension.

Branhams record distances between the above corners were 19.66 chains or 1297.56' both ways from N1/16NW corner, which compares within 0.13' to present measure.

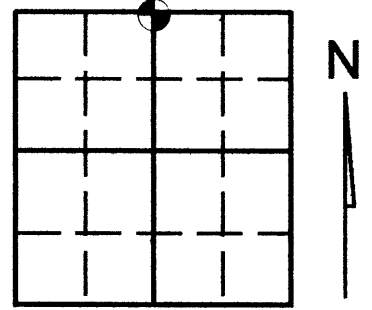
REGISTER OF DEEDS OFFICE
ONEIDA COUNTY, WIS.
FILED
NOV 9 1998
At _____ O'Clock _____ M
THOMAS H. LEIGHTON
REGISTER OF DEEDS

U.S. PUBLIC LAND SURVEY MONUMENT RECORD

Note: This form is intended and designed to fulfill all requirements of Wisconsin Administrative Code, Chapter A-E 7.08 U.S. Public Land Survey Monument Record (3)(a)(b)(c)(d)(e)(f)(g)(h)(i). An additional sheet may be added if necessary to conform with said requirements.

(a) Corner location: Township 37 North
 Range 07 East/West

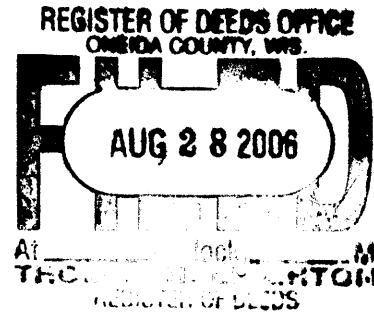
Town/City/Village CASSIAN
 County ONEIDA



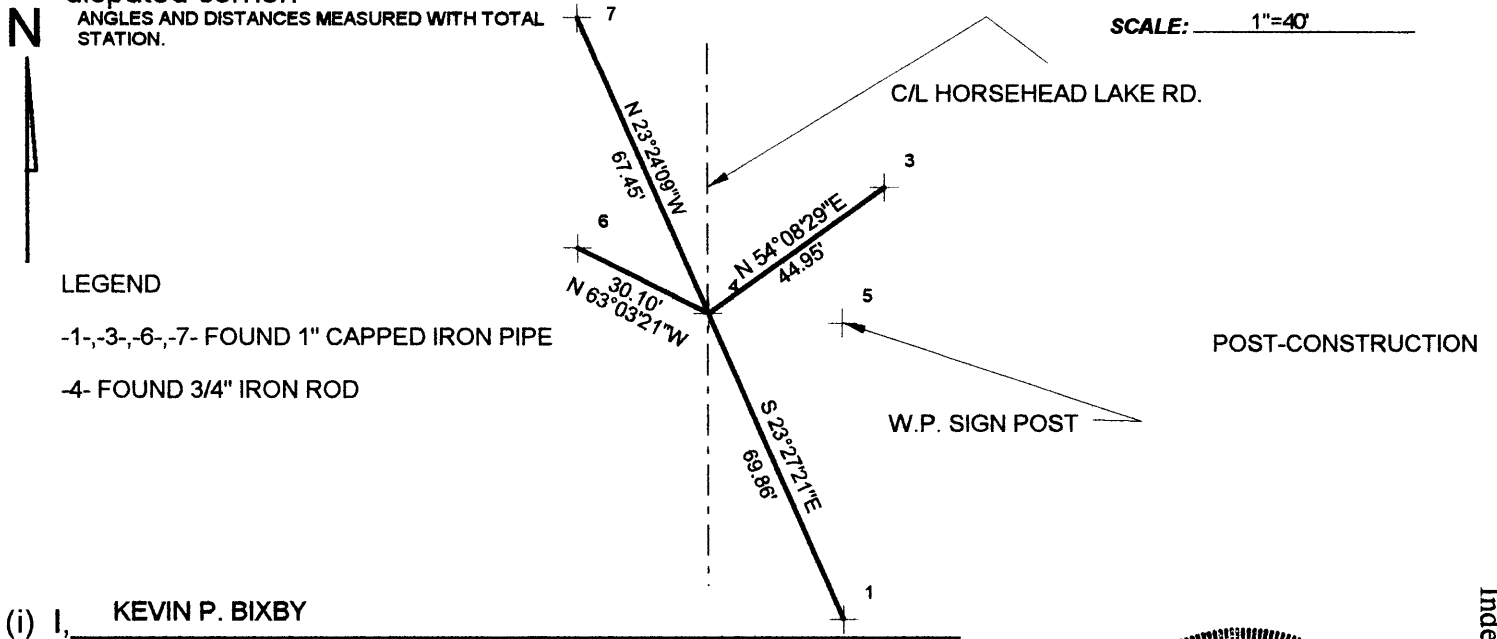
Section 33

(b) (f) (g) (h) Description of monument found at this corner and if it was accepted, state all evidence (material, testimonial, occupational, plats, records, other monuments) used as a basis for accepting. If not accepted or if nothing was found, state evidence used as basis for establishing location. If reestablished through lost corner proportionate methods, indicate all monuments, distances and directions used to establish. Indicate type of monument found or set and sign post.

FOUND 3/4" IRON ROD AS NOTED ON U.S. PUBLIC LAND SURVEY MONUMENT V-11.



(c) (d) (e) Plan view of corner with ties to at least 4 witness monuments. If in disagreement with previously established corner, show the distances between the two corners and also indicate the ties to the disputed corner.



(i) I, KEVIN P. BIXBY
 (type or print name) certify that the corner location on this record was determined by me or under my direction and control and that this U.S. Public Land Survey Monument Record is correct and complete to the best of my knowledge and belief.

Kevin P. Bixby
 Signature Date 08/04/06



Index No. V-11

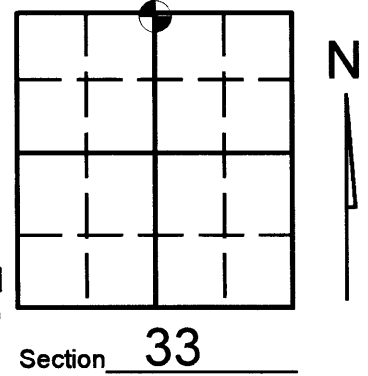
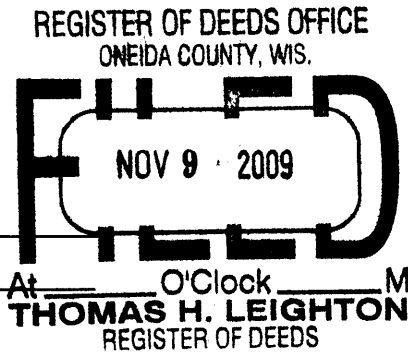
Stamp
3707280020

U.S. PUBLIC LAND SURVEY MONUMENT RECORD

Note: This form is intended and designed to fulfill all requirements of Wisconsin Administrative Code, Chapter A-E 7.08 U.S. Public Land Survey Monument Record (3)(a)(b)(c)(d)(e)(f)(g)(h)(i). An additional sheet may be added if necessary to conform with said requirements.

(a) Corner location: Township 37 North
 Range 07 East/West

Town/City/Village CASSIAN
 County ONEIDA



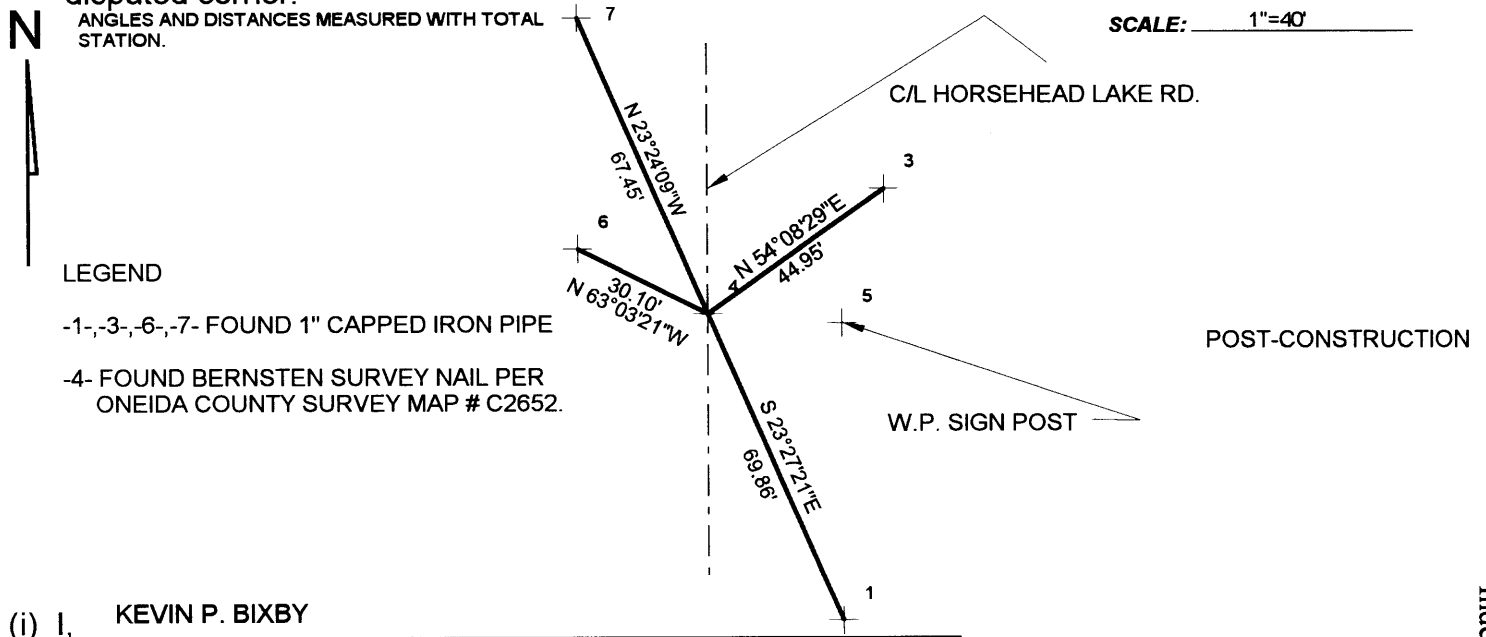
Section 33

(b) (f) (g) (h) Description of monument found at this corner and if it was accepted, state all evidence (material, testimonial, occupational, plats, records, other monuments) used as a basis for accepting. If not accepted or if nothing was found, state evidence used as basis for establishing location. If reestablished through lost corner proportionate methods, indicate all monuments, distances and directions used to establish. Indicate type of monument found or set and sign post.

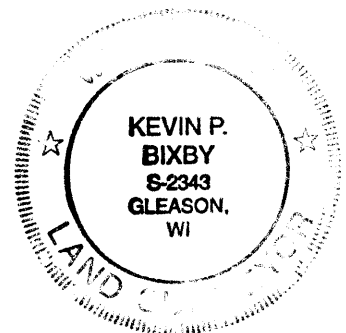
-05/04/09- PRE-CONSTRUCTION: Kevin Bixby found 3/4' iron rod and witnesses as noted on corner form V-11

11/04/09 - POST CONSTRUCTION: Kevin Bixby found Bernsten survey nail per Oneida County survey map # C2652. Position same as location per corner form V-11.

(c) (d) (e) Plan view of corner with ties to at least 4 witness monuments. If in disagreement with previously established corner, show the distances between the two corners and also indicate the ties to the disputed corner.



(i) I, KEVIN P. BIXBY
 (type or print name) certify that the corner location on this record was determined by me or under my direction and control and that this U.S. Public Land Survey Monument Record is correct and complete to the best of my knowledge and belief.



Kevin P. Bixby Signature 11/05/09 Date

Stamp

370728 00 20

Index No. V - 11