

U.S. PUBLIC LAND SURVEY MONUMENT LOCATION RECORD

Recorders Data

CORNER: C1/4 SECTION: 28 TOWNSHIP 37 NORTH RANGE 7 EAST/WEST

FOR M.C. CORNER INDICATE: NAME OF WATERWAY N/A SECTION LINE N/A

(CITY)(VILLAGE)(TOWN) OF: Cassian COUNTY OF: Oneida

Description of monument found or placed and all other evidence used as a basis for monument location; including all monuments and related measurements required if the corner location is reestablished by lost corner proportionate methods. Also indicate name of original surveyor, survey date, corner monument set and established bearing trees, witness or reference monuments with ties from available records.

No corner evidence observed nor detected of any reliability at this corner location so I reset the corner in existing blacktop pavement with a 3/4" dia. by 12" long steel rod with top flush, upon the basis of a retracement survey per control diagram and related notes drafted upon the reverse side of this form.

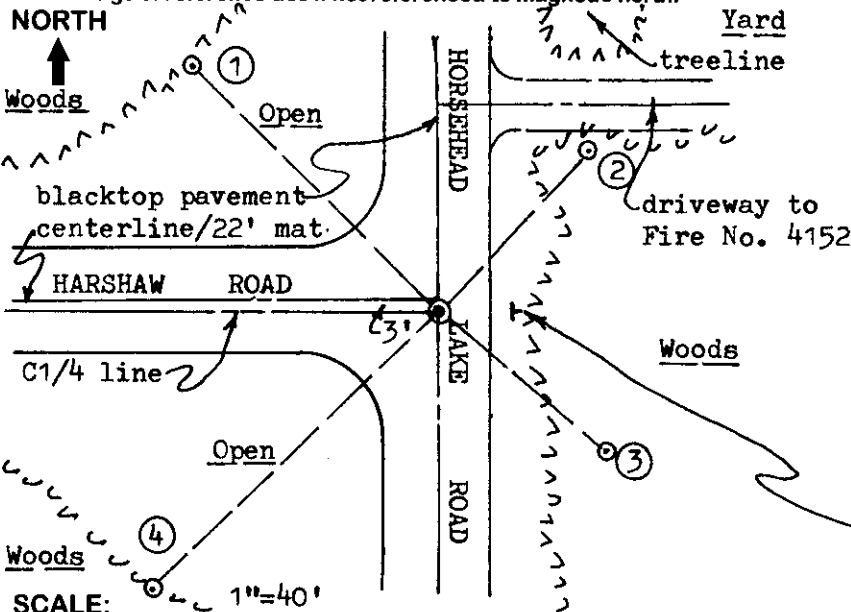
In 1934, H.C. Hall noted he used D.H. Vaughn C1/4 location for survey purposes but had not described what he found as a monument nor indicated any bearing trees.

In 1935, Maine noted the C1/4 corner by an undescribed symbol as "Smith's Ctr. of Sec.", and also noted no BTs; however he did note chainage of 2646.1' from the C1/4 South to the South 1/4 corner of Section 28 and 2628.4' to North 1/4 corner of Section 28.

This corner was reestablished in accordance with a retracement of the 1934 Hall survey at the request and approval of Oneida County Surveyor Mike Romportl.

This recovery was completed September 23, 1998; there were no witnesses other than several vehicle drive-bys.

Plan view map of monument location with bearing and distance ties to a minimum of four(4) described witness or reference monuments of concrete, natural stone, iron, live bearing trees or equivalent material. If applicable, also show a minimum of two(2) bearing and distance ties to any other monument found and not accepted; including the bearing and distance from the accepted monument. Indicate the basis for bearings of reference ties if not referenced to magnetic north.



WITNESS MONUMENT TIES:

- ① 3/4" dia. by 24" long iron pipe set with standard yellow poly Reference Mark cap flush with grade N45°W 72.69'.
- ② New BT 6" Bw N43°E 46.30'.
- ③ New BT North trunk of 10" Mr of clump of 5 S50°E 45.75'.
- ④ 3/4" dia. by 24" long iron pipe set with standard yellow poly Reference Mark cap flush with grade S47°W 83.61'.

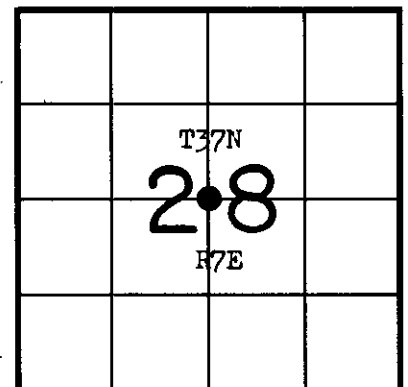
Standard white poly 'T' marker post set East of corner at edge of tree line.

Unless otherwise indicated, all bearing tree ties are to a .25" dia. by 2.5" long PK nail with a 1.25" dia. steel washer driven into unblazed right face and a .25" dia. by 2.5" long PK nail with a 2" dia. steel washer stamped 'BT' is also driven into unblazed face of bearing tree at DBH; the basis for measured bearings is magnetic to nearest degree and all tie distances are horizontal measure to nearest 1/100th feet.

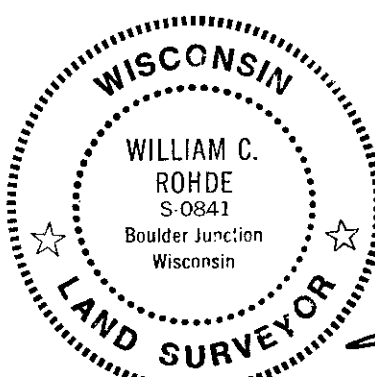
LAND SURVEYOR CERTIFICATION:

I, William C. Rohde, hereby certify that I am a duly licensed Professional Land Surveyor in Wisconsin, that this USPLS monument location was determined by me or under my direction and control, and that this U.S. Public Land Survey Monument Location Record is true and correct to the best of my knowledge and belief.

William C. Rohde Date: 10/29/98
Signature



INDEX NO. T 11



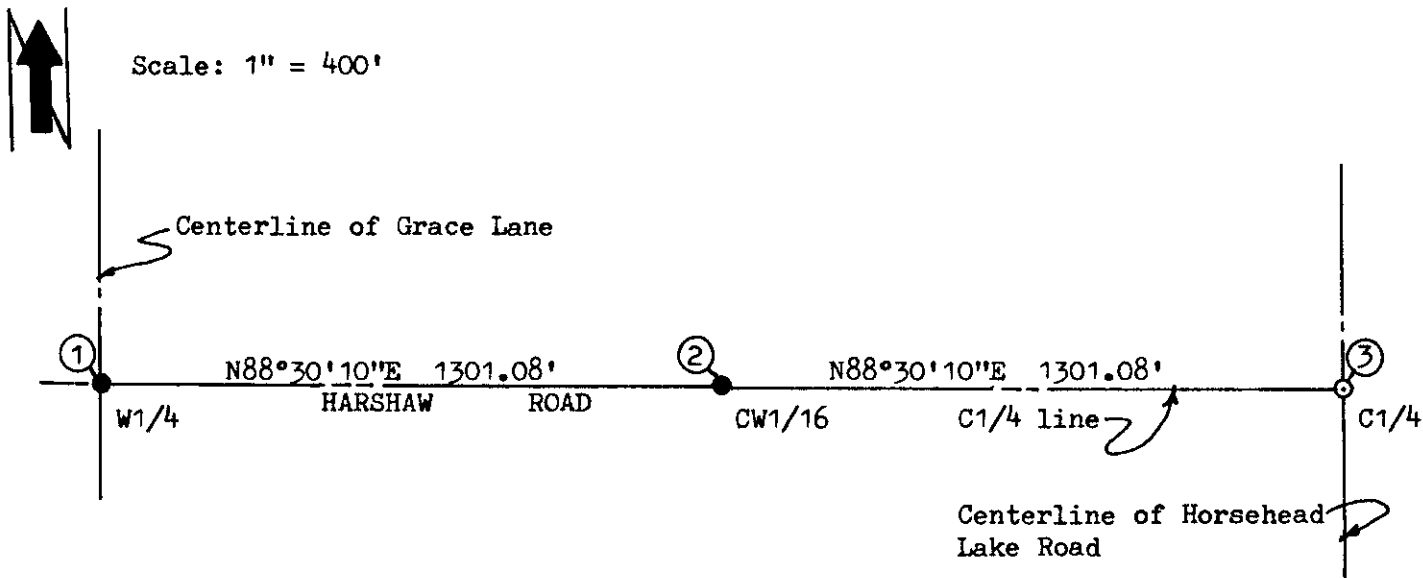
RLS SEAL

This form is intended to fulfill requirements of Chapter A-E 7.08 (3)(a)(b)(c)(d)(e)(f)(g)(h)(i) U.S. Public Land Survey Monument Location Record, Wisconsin Administrative Code. Use reverse side for geodetic location data and/or continuation purposes.

SECTION LOCATION MAP

INDEX NO. T 11
3707282020

SHEET NO. 1 OF 1
Page 1 of 2



MONUMENT LEGEND

- ① 3/4" sq. steel bar found flush in blacktop pavement per USPLS Monument Location Record filed in Oneida County records.
- ② 3/4" dia. steel rod found flush in blacktop pavement per USPLS Monument Location Record filed in Oneida County records.
- ③ 3/4" dia. by 12" long iron shaft set flush in blacktop pavement by this survey.

REMARKS:

The C1/4 corner of Section 28 was reestablished in conformity with a 1934 record survey by H.C. Hall, et al, by doubling the distance from the West 1/4 corner to the CW1/16 corner easterly on a right or straight line extension.

In 1934, H.C. Hall had set the CW1/16 midway on line between the West 1/4 and C1/4 corners at 19.73 chains, or 1302.18', each way, which compares within 1.10' at present measure.

Sheet 1 of 1
Page 2 of 2

