

**U.S. PUBLIC LAND SURVEY MONUMENT LOCATION RECORD**

Recorders Data

CORNER: NW Section SECTION: 33 TOWNSHIP 37 NORTH RANGE 7 EASTWEST

FOR M.C. CORNER INDICATE: NAME OF WATERWAY N/A SECTION LINE N/A

(CITY)(VILLAGE)(TOWN) OF: Cassian COUNTY OF: Oneida

Description of monument found or placed and all other evidence used as a basis for monument location; including all monuments and related measurements required if the corner location is reestablished by lost corner proportionate methods. Also indicate name of original surveyor, survey date, corner monument set and established bearing trees, witness or reference monuments with ties from available records.

Found and accepted a plumb 2" dia. yellow painted iron pipe monument with 2 1/2" dia. stamped brass cap 30" above existing grade at this corner location with a pointed 9" by 9" rock along North side of pipe. Also found probable overgrown blazes on some nearby trees but uncertain for recovery purposes.

In 1862, J.H. Jenkins/GLO set a wood post as the original section corner and marked OBTs; as follows:

a 14" Aspen S72°W 05 lks, a 10" Spruce N25°W 4 lks, a 10" Tam N14°E 31 lks and a 10" Sugar S38°E 22lks all of which are obliterated beyond reliability for positioning purposes.

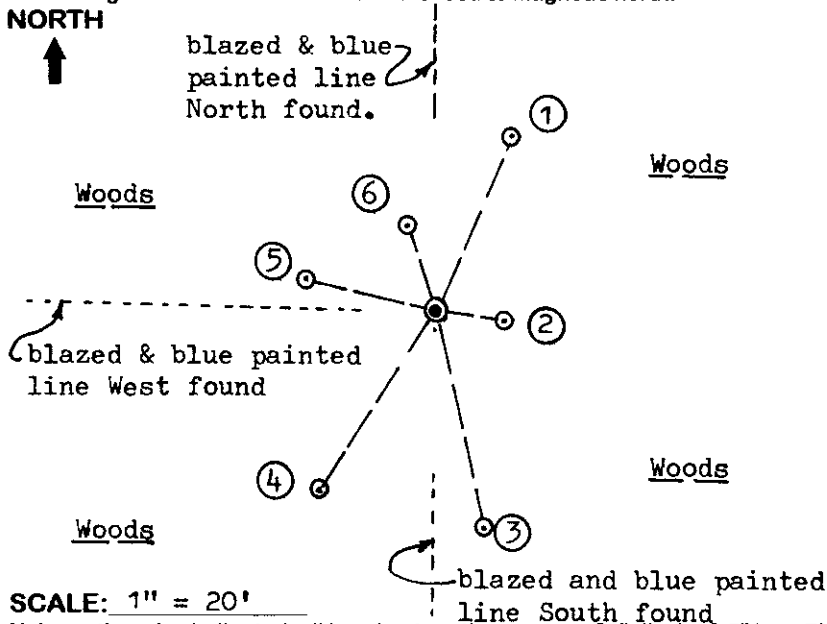
In 1912, Vaughn set a wood post at corner from roots of SE Sugar OBT and NE Tam OBT, and marked new BTs, a 14" Hem N27 1/2°W 27 1/2 lks and a 11" Sugar N72°E 42 1/4 lks, all of which are also obliterated.

In 1958, Branham noted that he found an I.P. with a brass cap at this corner and remains of Vaughns NW Hem BT and NE Maple BT OK; and he marked a new BT 6" Hem West 21 lks which is also now obliterated.

In 1976, Branham again notes a capped I.P. and BTs at this corner but did not describe.

This recovery completed October 16, 1998 and witnessed by Martin A. Gerdes, adjacent owner, who pointed out the corner location to me by visitation in the field.

Plan view map of monument location with bearing and distance ties to a minimum of four(4) described witness or reference monuments of concrete, natural stone, iron, live bearing trees or equivalent material. If applicable, also show a minimum of two(2) bearing and distance ties to any other monument found and not accepted; including the bearing and distance from the accepted monument. Indicate the basis for bearings of reference ties if not referenced to magnetic north.



**WITNESS MONUMENT TIES:**

- ① New BT 6" Mr N23°E 20.12'.
- ② New BT 7" Mr S83°E 7.18'.
- ③ New BT 6 1/2" Mr S12°E 23.46'.
- ④ New BT 5 1/2" Mr S33°W 22.55'.
- ⑤ New BT 8" Mr N75°W 13.75'.
- ⑥ New BT 6" Mr N18°W 9.24'.

Note: Standard white poly 'T' marker post set along West side of iron pipe corner monument & flagged, as well as all BTs with bright orange flagging tape.

SCALE: 1" = 20'

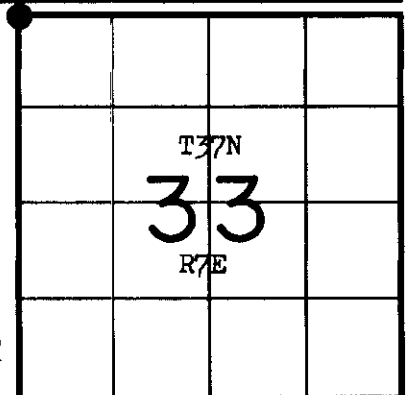
Unless otherwise indicated, all bearing tree ties are to a .25" dia. by 2.5" long PK nail with a 1.25" dia. steel washer driven into unblazed right face and a .25" dia. by 2.5" long PK nail with a 2" dia. steel washer stamped 'BT' is also driven into unblazed face of bearing tree at DBH; the basis for measured bearings is magnetic to nearest degree and all tie distances are horizontal measure to nearest 1/100th feet.

**LAND SURVEYOR CERTIFICATION:**

I, William C. Rohde, hereby certify that I am a duly licensed Professional Land Surveyor in Wisconsin, that this USPLS monument location was determined by me or under my direction and control, and that this U.S. Public Land Survey Monument Location Record is true and correct to the best of my knowledge and belief.

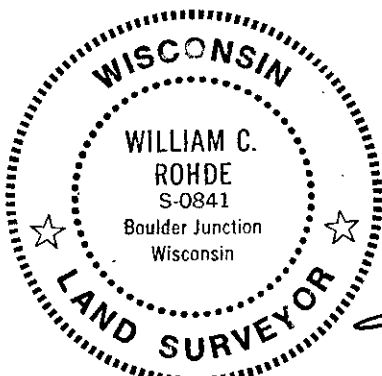
*William C. Rohde* Date: 10/29/98  
Signature

This form is intended to fulfill requirements of Chapter A-E 7.08 (3)(a)(b)(c)(d)(e)(f)(g)(h)(i) U.S. Public Land Survey Monument Location Record, Wisconsin Administrative Code. Use reverse side for geodetic location data and/or continuation purposes.



**SECTION LOCATION MAP**

INDEX NO. V 9  
3707290000



RLS SEAL

SHEET NO. 1 OF 1

INDEX NO. V 9