

U.S. PUBLIC LAND SURVEY MONUMENT RECORD

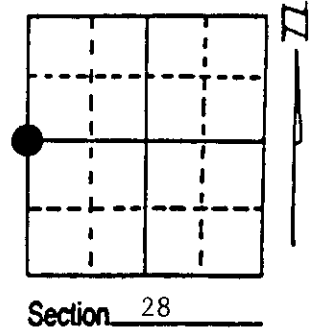
Note: This form is intended and designed to fulfill all requirements of Wisconsin Administrative Code, Chapter A-E 7.08 U.S. Public Land Survey Monument Record (3) (a) (b) (c) (d) (e) (f) (g) (h) (i). An additional sheet may be added if necessary to conform with said requirements.

(a) Corner location: Township 37 North

Range 8 7 East/West

Town/City/Village CASSIAN

County ONEIDA



(b) (f) (g) (h) Description of monument found at this corner and if it was accepted, state all evidence (material, testimonial, occupational, plats, records, other monuments) used as a basis for accepting. If not accepted or if nothing was found, state evidence used as basis for establishing location. If reestablished through lost corner proportionate methods, indicate all monuments, distances and directions used to establish. Indicate type of monument found or set and sign post.

1862 - Joseph H. Jenkins established this corner at 40.00 chains with two BTs:
 12" White Pine, N76°W, 20 Links 10" White Pine, N20°E, 6 Links

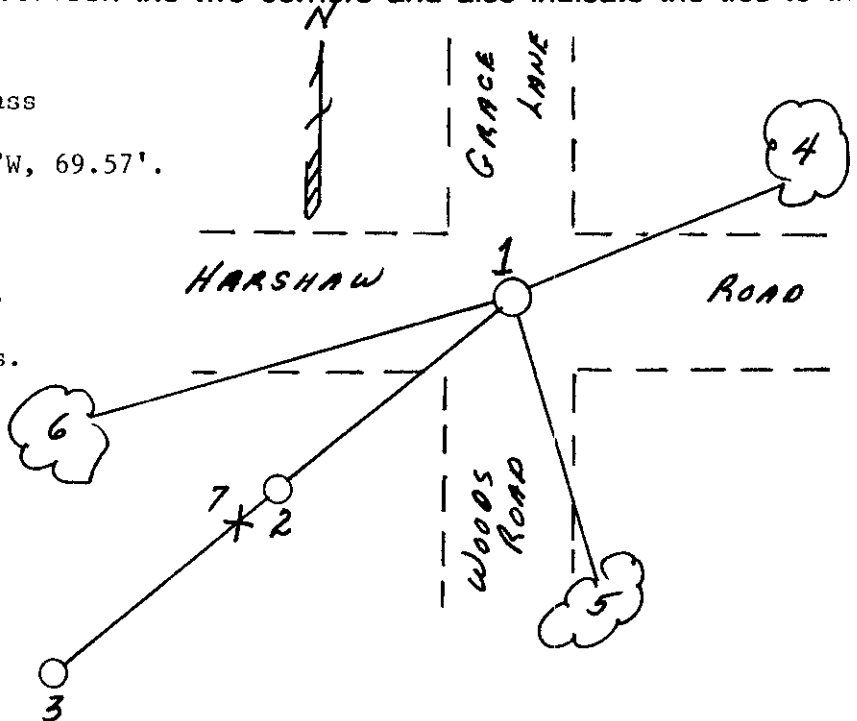
4/22/1994 - Milo E. Stefan found 1/2" square rod in road surface with 2" x 30" iron pipe with Brass Plate stamped N45°E, 56 Links to corner. (This is a RIPCO monument.) Found one BT, 12" Jack Pine, N57°E, 100.94'.

We set an additional reference monument, made two new BTs and placed a plastic sign post.

(c) (d) (e) Plan view of corner with ties to at least 4 witness monuments. If in disagreement with previously established corner, show the distances between the two corners and also indicate the ties to the disputed corner.

- 1) 1/2" square rod in road surface.
- 2) 2" x 24" iron pipe/4" square Brass Plate (by RIPCO), S45°W, 36.96'.
- 3) 2" x 36" aluminum monument, S45°W, 69.57'.
- 4) 12" Jack Pine, N57°E, 100.48'.
- 5) 10" Red Oak, S12°E, 76.22'.
- 6) 22" Red Oak, S64°W, 118.45'.
- 7) Plastic sign post, S45°W, 37.7'.

Distances to nail in side of BTs.
 Stump blaze scribed "BT".



(i) I, Milo E. Stefan
 (type or print name) certify that the corner location on this record was determined by me or under my direction and control and that this U.S. Public Land Survey Monument Record is correct and complete to the best of my knowledge and belief.

Milo E. Stefan
 Signature

May 19, 1994
 Date



Index No. T-9

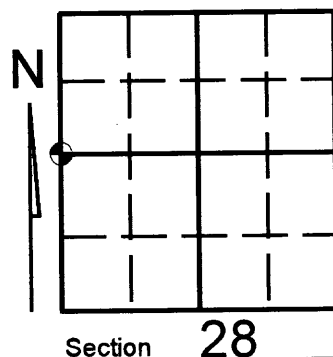
Stamp 3707292000

U.S. PUBLIC LAND SURVEY MONUMENT RECORD

Note: This form is intended and designed to fulfill all requirements of Wisconsin Administrative Code, Chapter A-E 7.08 U.S. Public Land Survey Monument Record (3)(a)(b)(c)(d)(e)(f)(g)(h)(i). An additional sheet may be added if necessary to conform with said requirements.

(a) Corner location: Township 37 North
Range 07 East/West

Town/City/Village CASSIAN
County ONEIDA



(b) (f) (g) (h) Description of monument found at this corner and if it was accepted, state all evidence (material, testimonial, occupational, plats, records, other monuments) used as a basis for accepting. If not accepted or if nothing was found, state evidence used as basis for establishing location. If reestablished through lost corner proportionate methods, indicate all monuments, distances and directions used to establish. Indicate type of monument found or set and sign post.

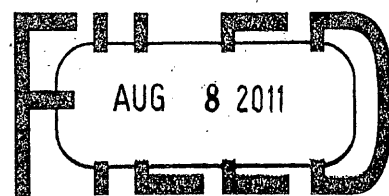
SEE CORNER FORM T-9 FOR HISTORY

4/22/94 MILO STEFAN FOUND 1/2" SQUARE ROD (SEE U.S.P.L.S. FORM T-9)

05/31/10 KEVIN BIXBY FOUND 1/2" SQUARE IRON ROD AND WITNESSES 2,3, AND 5 AS SHOWN ON U.S.P.L.S. FORM T-9 AND WITNESSED FOR PRE-CONSTRUCTION

07/26/11 KEVIN BIXBY FOUND A P.K. NAIL SET BY OTHERS THAT IS IN HARMONY WITH PRE-CONSTRUCTION WITNESSES FROM 05/31/11. ACCEPTED P.K. NAIL AND WITNESSED AS SHOWN BELOW.

REGISTER OF DEEDS OFFICE
ONEIDA COUNTY, WIS.



At _____ O'Clock _____ M
THOMAS H. LEIGHTON
REGISTER OF DEEDS

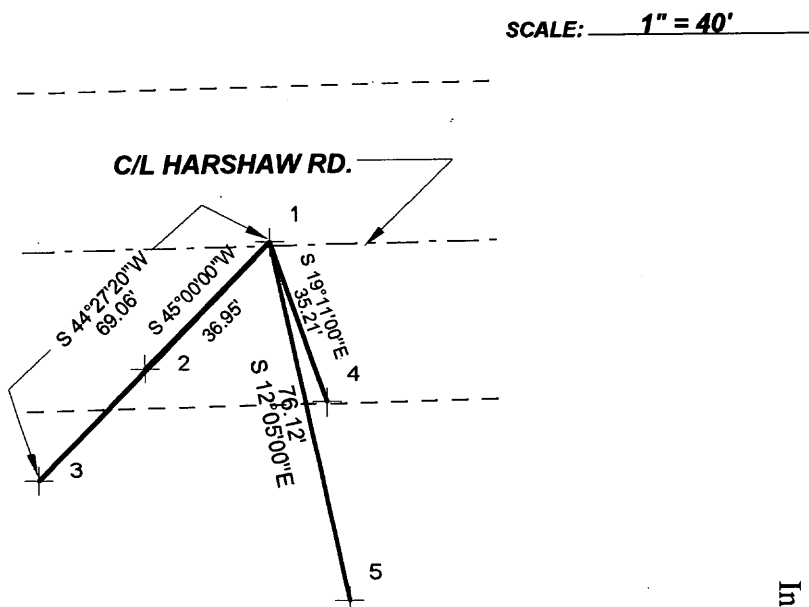
(c) (d) (e) Plan view of corner with ties to at least 4 witness monuments. If in disagreement with previously established corner, show the distances between the two corners and also indicate the ties to the disputed corner.



Bearings and distances observed with total station.

LEGEND

- 1- EXISTING P.K. NAIL
- 2- 2" SQUARE CAPPED RIPCO IRON PIPE (SEE LAND CORNER FORM T-9)
- 3- EXISTING ONEIDA COUNTY WITNESS MONUMENT (SEE LAND CORNER FORM T-9)
- 4- EXISTING 1" IRON PIPE
- 5- SET SPIKE IN 14" OAK (SEE LAND CORNER FORM T-9)



(i) I, KEVIN P. BIXBY

(type or print name) certify that the corner location on this record was determined by me or under my direction and control and that this U.S. Public Land Survey Monument Record is correct and complete to the best of my knowledge and belief.



Index No. 79

Kevin P. Bixby
Signature

08/01/11
Date

Stamp

3707 29 20 00